

## 3.0 PARKLAND INVENTORY

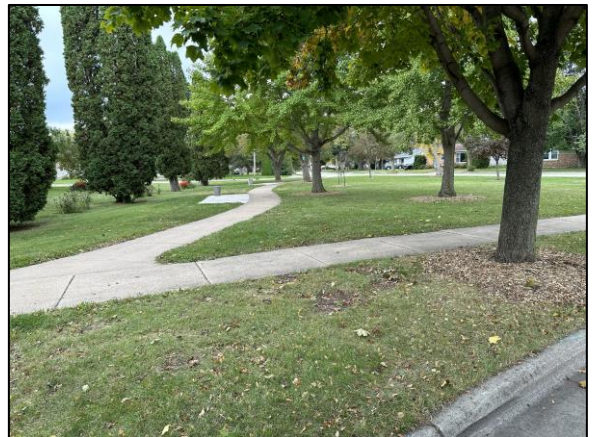
### 3.1 City Parks

<b>Name:</b>	<b>Congress Avenue Tot Lot</b>
<b>Classification:</b>	Mini Park
<b>Address:</b>	1410 Beech St
<b>Location:</b>	Located along Congress Avenue just north of the Congress Avenue Athletic Fields.
<b>Size:</b>	0.44 acres
<b>Parcel/s #:</b>	91203980200
<b>Amenities:</b>	<ul style="list-style-type: none"> <li>▪ Playground Equipment</li> <li>▪ Benches</li> </ul>



### 3.0 PARKLAND INVENTORY

<b>Name:</b>	<b>Garden Club Park</b>
<b>Classification:</b>	Mini Park
<b>Address:</b>	310 Mason St
<b>Location:</b>	Located on the southern side of Oshkosh, south of Witzel Ave and west of Sawyer St.
<b>Size:</b>	0.35 acres
<b>Parcel/s #:</b>	
<b>Amenities:</b>	<ul style="list-style-type: none"> <li>▪ Historical Interest</li> <li>▪ Benches</li> </ul>





### 3.0 PARKLAND INVENTORY

<b>Name:</b>	<b>William Waters Plaza</b>
<b>Classification:</b>	Mini Park
<b>Address:</b>	105 Washington Ave
<b>Location:</b>	Located at the intersection of State St and Washington Ave, across from the Oshkosh Public Library.
<b>Size:</b>	0.18 acres
<b>Parcel/s #:</b>	
<b>Amenities:</b>	<ul style="list-style-type: none"> <li>▪ Historical Interest</li> <li>▪ Benches</li> <li>▪ Tables</li> </ul>



### 3.0 PARKLAND INVENTORY

<b>Name:</b>	<b>44<sup>th</sup> Parallel Park</b>
<b>Classification:</b>	Neighborhood Park
<b>Address:</b>	2230 Allerton Dr
<b>Location:</b>	Located on the southwest side of Oshkosh, north of W 12 <sup>th</sup> Ave.
<b>Size:</b>	4.90 acres
<b>Parcel/s #:</b>	91316400100
<b>Amenities:</b>	<ul style="list-style-type: none"> <li>▪ Open Space</li> <li>▪ Playground Equipment</li> <li>▪ Baseball/Softball Field</li> <li>▪ Tennis Courts (2 courts)</li> <li>▪ Benches</li> <li>▪ Picnic Tables</li> <li>▪ Open Air Shelter</li> </ul>



### 3.0 PARKLAND INVENTORY

<b>Name:</b>	<b>Abbey Park</b>
<b>Classification:</b>	Neighborhood Park
<b>Address:</b>	700 South Westhaven Dr
<b>Location:</b>	Located on the southwest side of Oshkosh, along South Westhaven Drive.
<b>Size:</b>	9.01 acres
<b>Parcel/s #:</b>	90615460000 90615460100
<b>Amenities:</b>	<ul style="list-style-type: none"> <li>▪ Creek</li> <li>▪ Natural Area</li> <li>▪ Playground Equipment</li> <li>▪ Trails (unpaved)</li> <li>▪ Benches</li> <li>▪ Picnic Tables</li> <li>▪ Open Air Shelter</li> </ul>





### 3.0 PARKLAND INVENTORY

<b>Name:</b>	<b>Abe Rochlin Park</b>
<b>Classification:</b>	Neighborhood Park
<b>Address:</b>	1300 N Sawyer St
<b>Location:</b>	Located in the north-central part of Oshkosh next to the Oshkosh Avenue Bridge.
<b>Size:</b>	5.16 acres
<b>Parcel/s #:</b>	91600260000
<b>Amenities:</b>	<ul style="list-style-type: none"> <li>▪ Fox River and Sawyer Creek</li> <li>▪ Playground Equipment</li> <li>▪ Trails (paved)</li> <li>▪ Fishing</li> <li>▪ Historical Interest</li> <li>▪ Off-Street Parking</li> <li>▪ Restroom</li> <li>▪ Picnic Tables</li> <li>▪ Shelter</li> </ul>
<b>Historical Note:</b>	Abraham Rochlin's (1917-1975) company, one of the nation's leading manufacturers of plywood, purchased the Pluswood Division of Lullabye Furniture Company of Stevens Point, located on this site, in 1949. In 1987 the land was donated for a park named after Abe Rochlin. The wooden buildings were razed, but a smokestack from Wisconsin's first sawmill, built in 1847 by E.E. Foreman and Coles Bashford, was preserved.



### 3.0 PARKLAND INVENTORY

<b>Name:</b>	<b>Baumann Park</b>
<b>Classification:</b>	Neighborhood Park
<b>Address:</b>	1010 Fillmore Ave
<b>Location:</b>	Located along the Fox River, just south of Rochlin Park and the Oshkosh Avenue Bridge.
<b>Size:</b>	2.02 acres
<b>Parcel/s #:</b>	91604720300
<b>Amenities:</b>	<ul style="list-style-type: none"> <li>▪ Fox River</li> <li>▪ Playground Equipment</li> <li>▪ Baseball/Softball</li> <li>▪ Fishing</li> <li>▪ Benches</li> <li>▪ Picnic Tables</li> <li>▪ Open Air Shelter</li> </ul>



### 3.0 PARKLAND INVENTORY

<b>Name:</b>	<b>Fugleberg Park</b>
<b>Classification:</b>	Neighborhood Park
<b>Address:</b>	2000 Doty St
<b>Location:</b>	Located on the southeast side of Oshkosh, along South Main Street across from the Fugleberg Boat Launch and Lake Winnebago.
<b>Size:</b>	2.50 acres
<b>Parcel/s #:</b>	91401060100
<b>Amenities:</b>	<ul style="list-style-type: none"> <li>▪ Open Space</li> <li>▪ Playground Equipment</li> <li>▪ Basketball Court</li> <li>▪ Benches</li> <li>▪ Picnic Tables</li> <li>▪ Shelter</li> </ul>
<b>Historical Note:</b>	<p>Carl Fugleberg (1881-1959) served as city alderman, police commissioner, and park board member. Carl pledged \$1,500 in 1933 toward its purchase for a park. The city then bought the land from its current owners, heirs of Dr. Edwin Streich. The park was built up with fill from depression-era Works Progress Administration sewer construction.</p>





### 3.0 PARKLAND INVENTORY

<b>Name:</b>	<b>Mary Jewell Park</b>
<b>Classification:</b>	Neighborhood Park
<b>Address:</b>	1600 Oshkosh Ave
<b>Location:</b>	Located south of Lakeshore Park along Oshkosh Ave.
<b>Size:</b>	4.64 acres
<b>Parcel/s #:</b>	91608470701
<b>Amenities:</b>	<ul style="list-style-type: none"> <li>▪ Baseball/Softball Field</li> <li>▪ Picnic Area</li> <li>▪ Restrooms</li> <li>▪ Pavilion</li> </ul>
<b>Historical Note:</b>	Mary Jewell Park was named for Mary Jewell Sawyer, wife of Edgar Sawyer, a prominent businessman and philanthropist. Active in Oshkosh cultural circles, she passed away in 1910.



### 3.0 PARKLAND INVENTORY

<b>Name:</b>	<b>Park Site A</b>
<b>Classification:</b>	Neighborhood Park
<b>Address:</b>	W. Ripple Ave
<b>Location:</b>	Located on the south side of the city, just east of Oregon St.
<b>Size:</b>	3.5 acres
<b>Parcel/s #:</b>	91411230200
<b>Amenities:</b>	<ul style="list-style-type: none"><li>▪ Open Space</li></ul>



### 3.0 PARKLAND INVENTORY

<b>Name:</b>	<b>Pickart Park</b>
<b>Classification:</b>	Neighborhood Park
<b>Address:</b>	Mary's Dr
<b>Location:</b>	Located in the Pickart Estates subdivision, on the west side of the city, just north of W 9 <sup>th</sup> Ave.
<b>Size:</b>	1.51 acres
<b>Parcel/s #:</b>	90665020104
<b>Amenities:</b>	<ul style="list-style-type: none"> <li>▪ Open Space</li> </ul>





### 3.0 PARKLAND INVENTORY

<b>Name:</b>	<b>Quarry Park</b>
<b>Classification:</b>	Neighborhood Park
<b>Address:</b>	925 Florida Ave
<b>Location:</b>	Located on the south side of the city near Knapp Street.
<b>Size:</b>	8.02 acres
<b>Parcel/s #:</b>	91307010000
<b>Amenities:</b>	<ul style="list-style-type: none"> <li>▪ Open Space</li> <li>▪ Soccer Fields</li> </ul>
<b>Historical Note:</b>	<p>Quarry Park consists of property from three adjacent quarries dating back to the 19th century.</p> <p>William Faber's Oshkosh Stone Company, 50 feet deep, was the last quarry to close in 1954. The city bought or leased most of the land for sanitary landfills by 1962. The three landfills were filled by 1968 and plans were made for grading, fencing and adding park facilities.</p>



### 3.0 PARKLAND INVENTORY

<b>Name:</b>	<b>Roe Park</b>
<b>Classification:</b>	Neighborhood Park
<b>Address:</b>	300 Washington Ave
<b>Location:</b>	Located on the east side of Oshkosh along Washington Avenue.
<b>Size:</b>	1.65 acres
<b>Parcel/s #:</b>	90400110000
<b>Amenities:</b>	<ul style="list-style-type: none"> <li>▪ Playground Equipment</li> <li>▪ Trails (paved)</li> <li>▪ Benches</li> </ul>
<b>Historical Note:</b>	<p>Gilbert Wheeler Roe (1833-1903) was a prominent Oshkosh banker. His children purchased land in 1909 from the original homestead and donated it for a public park named for their father. Mayor Voss designated it the city's first "inner" park and suggested it become the city's first park playground. Additional land was purchased in 1927 for park expansion.</p>



### 3.0 PARKLAND INVENTORY

<b>Name:</b>	<b>Stevens Park</b>
<b>Classification:</b>	Neighborhood Park
<b>Address:</b>	44 Frankfort St
<b>Location:</b>	Located on the east side of Oshkosh, north of Bay Shore Drive.
<b>Size:</b>	4.85 acres
<b>Parcel/s #:</b>	90804060000
<b>Amenities:</b>	<ul style="list-style-type: none"> <li>▪ Open Space</li> <li>▪ Playground Equipment</li> <li>▪ Trails (paved)</li> <li>▪ Baseball/Softball Field</li> <li>▪ Basketball Court</li> <li>▪ Tennis (1 court)</li> <li>▪ Community Gardens</li> <li>▪ Benches</li> <li>▪ Picnic Tables</li> <li>▪ Restrooms</li> <li>▪ Shelters</li> </ul>
<b>Historical Note:</b>	Ephraim E. Stevens (1851-1907) was mayor of Oshkosh 1889-1890, state senator 1904-1905 and a local architect. He was supervising architect of several schools, including Merrill and Oshkosh High. Known as the “parks mayor” he convinced the council to buy South Park and Menominee Park. This park was dedicated to Stevens in 1974.





### 3.0 PARKLAND INVENTORY

<b>Name:</b>	<b>Stoegbauer Park</b>
<b>Classification:</b>	Neighborhood Park
<b>Address:</b>	745 W 6th Ave
<b>Location:</b>	Located in the south-central part of Oshkosh along W 6 <sup>th</sup> Avenue.
<b>Size:</b>	1.87 acres
<b>Parcel/s #:</b>	90602140000
<b>Amenities:</b>	<ul style="list-style-type: none"> <li>▪ Playground Equipment</li> <li>▪ Baseball/Softball Field</li> <li>▪ Basketball Court</li> <li>▪ Historical Interest</li> <li>▪ Benches</li> </ul>
<b>Historical Note:</b>	<p>Otto J. Stoegbauer (1890-1959) served as Sixth Ward alderman for 18 years and vice mayor for a year. He was a well known local baseball umpire, nicknamed “the peacemaker” for mediating disagreements among city officials, citizens and industry. Stoegbauer Park was once the old Franklin School site across the street from where Stoegbauer lived for most of his life. He was also the school’s athletic director from 1927 to 1945.</p>



### 3.0 PARKLAND INVENTORY

<b>Name:</b>	<b>Teichmiller Park</b>
<b>Classification:</b>	Neighborhood Park
<b>Address:</b>	2300 Crane St
<b>Location:</b>	Located in the northern part of the city, just west of Oshkosh North High School.
<b>Size:</b>	5.59 acres
<b>Parcel/s #:</b>	91219620100
<b>Amenities:</b>	<ul style="list-style-type: none"> <li>▪ Playground Equipment</li> <li>▪ Baseball/Softball Field</li> <li>▪ Batting Cage</li> <li>▪ Basketball Court</li> <li>▪ Tennis (2 courts)</li> <li>▪ Historical Interest</li> <li>▪ Drinking Water</li> <li>▪ Restrooms</li> </ul>
<b>Historical Note:</b>	Algoma Park was renamed in 1994 for Bernice “Bea” Teichmiller (1917-1987), a long-time civic leader and member of the Oshkosh Common Council from 1972 to 1986. The council dedicated the park in her name to honor her efforts to ensure land or fees were set aside for parkland when land was subdivided or annexed. Today this is standard policy. The park was created in 1974.



### 3.0 PARKLAND INVENTORY

<b>Name:</b>	<b>West Algoma Park</b>
<b>Classification:</b>	Neighborhood Park
<b>Address:</b>	1320 Punhoqua St
<b>Location:</b>	Located along Oshkosh Ave and the banks of Sawyer Creek.
<b>Size:</b>	1.8 acres
<b>Parcel/s #:</b>	91600090000
<b>Amenities:</b>	<ul style="list-style-type: none"> <li>▪ Sawyer Creek</li> <li>▪ Open Space</li> <li>▪ Playground Equipment</li> <li>▪ Fishing</li> <li>▪ Historical Interest</li> <li>▪ Picnic Tables</li> <li>▪ Open Air Shelter</li> </ul>
<b>Historical Note:</b>	<p>This park was officially named West Algoma Park in 1938. It was once called Mary Jewell Park, built on land donated by Edgar Sawyer in 1916 in memory of his wife who died in 1910. Sawyer agreed to allow a school here in 1919 in exchange for a park named Mary Jewell across the street on land formerly owned by the Jewell family. The school was never built and to clear up confusion about two parks called Mary Jewell, this one was declared West Algoma, the name people called the area before it was annexed.</p>





### 3.0 PARKLAND INVENTORY

<b>Name:</b>	<b>Westhaven Circle Park</b>
<b>Classification:</b>	Neighborhood Park
<b>Address:</b>	1625 South Westhaven Dr
<b>Location:</b>	Located in the southwest part of the city, just south of Newport Avenue.
<b>Size:</b>	6.59 acres
<b>Parcel/s #:</b>	91315810000
<b>Amenities:</b>	<ul style="list-style-type: none"> <li>▪ Open Space</li> <li>▪ Playground Equipment</li> <li>▪ Baseball/Softball</li> <li>▪ Soccer</li> <li>▪ Basketball Court</li> <li>▪ Pickleball (2 courts)</li> <li>▪ Tennis (1 court)</li> <li>▪ Sledding Hill</li> <li>▪ Benches</li> <li>▪ Drinking Water</li> <li>▪ Restrooms</li> </ul>



### 3.0 PARKLAND INVENTORY

<b>Name:</b>	<b>Lakeshore Park</b>
<b>Classification:</b>	Community Park
<b>Address:</b>	2175 Punhoqua St
<b>Location:</b>	Located in the northwestern part of the city along the Fox River, north of Oshkosh Ave.
<b>Size:</b>	69.63 acres
<b>Parcel/s #:</b>	91608470701
<b>Amenities</b>	<ul style="list-style-type: none"> <li>▪ Fox River</li> <li>▪ Open Space</li> <li>▪ Paved Trails</li> <li>▪ Fishing</li> <li>▪ Benches</li> <li>▪ Drinking Water</li> <li>▪ Off-Street Parking</li> <li>▪ Picnic Areas</li> <li>▪ Restrooms</li> <li>▪ 4-Seasons Building</li> </ul>





### 3.0 PARKLAND INVENTORY

<b>Name:</b>	<b>Menominee Park</b>
<b>Classification:</b>	Community Park
<b>Address:</b>	Hazel St and Merritt Ave
<b>Location:</b>	Located on the northeast side of the city, along the shores of Lake Winnebago.
<b>Size:</b>	103.39 acres
<b>Parcel/s #:</b>	91110350000 91511870000
<b>Amenities:</b>	<ul style="list-style-type: none"> <li>▪ Lake Winnebago</li> <li>▪ Open Space</li> <li>▪ Playground Equipment</li> <li>▪ Trails (paved)</li> <li>▪ Baseball/Softball</li> <li>▪ Soccer</li> <li>▪ Volleyball</li> <li>▪ Basketball Court</li> <li>▪ Tennis (3 courts) n</li> <li>▪ Pickleball (4 courts)</li> <li>▪ Boat Launch</li> <li>▪ Fishing Dock</li> <li>▪ Ice Skating</li> <li>▪ Amusement Rides</li> <li>▪ Historical Interest</li> <li>▪ Zoo</li> <li>▪ Off-Street Parking</li> <li>▪ Picnic Areas</li> <li>▪ Restrooms</li> <li>▪ Shelters/Pavilions</li> </ul>
<b>Historical Note:</b>	Originally called North Park, the park was renamed in 1911 when Colonel John Hicks gave the city the statue of Menominee Chief Oshkosh.





### 3.0 PARKLAND INVENTORY

<b>Name:</b>	<b>Rainbow Memorial Park</b>
<b>Classification:</b>	Community Park
<b>Address:</b>	1650 Rainbow Dr
<b>Location:</b>	Located along the south side of the Fox River, just northwest of the Oshkosh Ave bridge.
<b>Size:</b>	17.05 acres
<b>Parcel/s #:</b>	91601320000 91601320100
<b>Amenities:</b>	<ul style="list-style-type: none"> <li>▪ Fox River</li> <li>▪ Open Space</li> <li>▪ Playground Equipment</li> <li>▪ Trails (paved)</li> <li>▪ Baseball/Softball</li> <li>▪ Boat Launch</li> <li>▪ Fishing Dock</li> <li>▪ Historical Interest</li> <li>▪ Benches</li> <li>▪ Off-Street Parking</li> <li>▪ Picnic Area</li> <li>▪ Restrooms</li> <li>▪ Shelter/Pavilion</li> </ul>
<b>Historical Note:</b>	Rainbow Memorial Park was dedicated in 1957 to the memory of Oshkosh soldiers who served with the 42nd (Rainbow) Division in World War I.



### 3.0 PARKLAND INVENTORY

<b>Name:</b>	<b>Red Arrow Park</b>
<b>Classification:</b>	Community Park
<b>Address:</b>	613 North Eagle St
<b>Location:</b>	Situated along Sawyer Creek, in the south-central part of the city, just north of Taft Ave.
<b>Size:</b>	26.6 acres
<b>Parcel/s #:</b>	91608690000
<b>Amenities:</b>	<ul style="list-style-type: none"> <li>▪ Sawyer Creek</li> <li>▪ Open Space</li> <li>▪ Playground Equipment</li> <li>▪ Baseball/Softball (3 fields)</li> <li>▪ Disc Golf</li> <li>▪ Fishing</li> <li>▪ Sledding</li> <li>▪ Water Park</li> <li>▪ Historical Interest</li> <li>▪ Skate Park</li> <li>▪ Off-Street Parking</li> <li>▪ Picnic Area</li> <li>▪ Restrooms</li> </ul>
<b>Historical Note:</b>	In 1962, the Red Arrow Veterans Club urged the city to designate a 32-acre park to honor the men of the 32nd (Red Arrow) Division of the US National Guard. The 32nd was made up of units from Wisconsin and Michigan who fought in both world wars





### 3.0 PARKLAND INVENTORY

<b>Name:</b>	<b>South Park</b>
<b>Classification:</b>	Community Park
<b>Address:</b>	1300 Georgia St
<b>Location:</b>	Located on the south side of the city, along W South Park Ave.
<b>Size:</b>	23.68 acres
<b>Parcel/s #:</b>	91305740000
<b>Amenities:</b>	<ul style="list-style-type: none"> <li>▪ Lagoons</li> <li>▪ Open Space</li> <li>▪ Playground Equipment</li> <li>▪ Trails (paved)</li> <li>▪ Horseshoes</li> <li>▪ Basketball Court</li> <li>▪ Pickleball (4 courts)</li> <li>▪ Tennis (2 courts)</li> <li>▪ Fishing</li> <li>▪ Historical Interest</li> <li>▪ Splash Pad</li> <li>▪ Benches</li> <li>▪ Off-Street Parking</li> <li>▪ Picnic Areas</li> <li>▪ Restrooms</li> <li>▪ Shelters/Pavilions</li> </ul>
<b>Historical Note:</b>	Mayor Ephraim Stevens convinced the council to buy part of the homestead of Dr. Samuel Osborn in 1889 for a south side park to complement park land purchased on the north side of the Fox River. An attempt to rename South Park in 1934 was unsuccessful.





### 3.0 PARKLAND INVENTORY

<b>Name:</b>	<b>24<sup>th</sup> Avenue Boat Launch</b>
<b>Classification:</b>	Waterfront Recreation
<b>Address:</b>	2404 S Main St
<b>Location:</b>	Located on the southeast side of the city, across from Glatz Nature Preserve.
<b>Size:</b>	1.68 acres
<b>Parcel/s #:</b>	91413370000
<b>Amenities:</b>	<ul style="list-style-type: none"> <li>▪ Lake Winnebago</li> <li>▪ Boat Launch</li> <li>▪ Fishing</li> <li>▪ Benches</li> <li>▪ Off-Street Parking</li> <li>▪ Picnic Area</li> <li>▪ Restrooms</li> </ul>



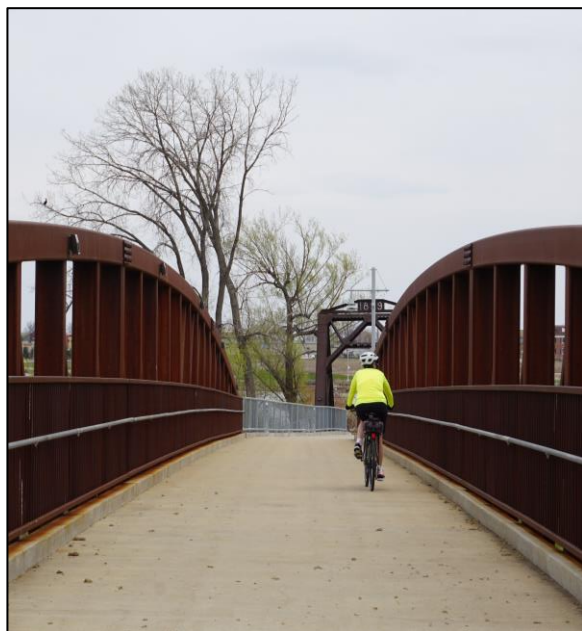
### 3.0 PARKLAND INVENTORY

<b>Name:</b>	<b>Al Broullire Memorial Garden</b>
<b>Classification:</b>	Waterfront Recreation
<b>Address:</b>	500 South Main St
<b>Location:</b>	Located along the Fox River, southeast of the S Main Street bridge.
<b>Size:</b>	0.14 acres
<b>Parcel/s #:</b>	90301330100
<b>Amenities:</b>	<ul style="list-style-type: none"><li>▪ Fox River</li><li>▪ Fishing</li><li>▪ Riverwalk</li></ul>



### 3.0 PARKLAND INVENTORY

<b>Name:</b>	<b>Boatworks</b>
<b>Classification:</b>	Waterfront Recreation
<b>Address:</b>	362 Michigan St
<b>Location:</b>	Located in the south-central part of the city, along the Fox River between the Jackson St and Wisconsin St bridges.
<b>Size:</b>	5.00 acres
<b>Parcel/s #:</b>	90904970300
<b>Amenities:</b>	<ul style="list-style-type: none"> <li>▪ Fox River</li> <li>▪ Open Space</li> <li>▪ Trails (paved)</li> <li>▪ Kayak/Canoe Launch</li> <li>▪ Fishing Dock</li> <li>▪ Off-Street Parking</li> <li>▪ Picnic Area</li> <li>▪ Restroom</li> <li>▪ Shelter/Pavilion</li> </ul>





### 3.0 PARKLAND INVENTORY

<b>Name:</b>	<b>Bowen Street Fishing Dock</b>
<b>Classification:</b>	Waterfront Recreation
<b>Address:</b>	1 Bowen St
<b>Location:</b>	Located at the junction of the Fox River and Lake Winnebago on the east-central side of the city.
<b>Size:</b>	0.33 acres
<b>Parcel/s #:</b>	
<b>Amenities:</b>	<ul style="list-style-type: none"><li>▪ Lake Winnebago</li><li>▪ Fishing</li></ul>



### 3.0 PARKLAND INVENTORY

<b>Name:</b>	<b>Carl E. Steiger Park</b>
<b>Classification:</b>	Waterfront Recreation
<b>Address:</b>	19 Wisconsin St
<b>Location:</b>	Located along the riverfront and the Wisconsin Street bridge; across from William A Steiger Park.
<b>Size:</b>	2.43 acres
<b>Parcel/s #:</b>	90103660100
<b>Amenities:</b>	<ul style="list-style-type: none"> <li>▪ Fox River</li> <li>▪ Open Space</li> <li>▪ Trails (paved)</li> <li>▪ Fishing</li> <li>▪ Historical Interest</li> <li>▪ Picnic Area</li> <li>▪ Open Air Shelter</li> </ul>
<b>Historical Note:</b>	The city dedicated this park in 1985 to Carl Steiger (1896-1985), an Oshkosh civic leader and president of Deltox Rug Company from 1929 until it closed in 1968. The city razed several Deltox buildings to create the park. Deltox was founded as Oshkosh Grass Matting Company and in the early 1900s manufactured rugs and twine from tough marsh grass in area wetlands.



### 3.0 PARKLAND INVENTORY

<b>Name:</b>	<b>Fugleberg Boat Launch</b>
<b>Classification:</b>	Waterfront Recreation
<b>Address:</b>	1942 S Main St.
<b>Location:</b>	Located in the southeast section of the city, across from Fugleberg Park.
<b>Size:</b>	2.4 acres
<b>Parcel/s #:</b>	91401060000
<b>Amenities:</b>	<ul style="list-style-type: none"><li>▪ Lake Winnebago</li><li>▪ Boat Launch</li><li>▪ Fishing</li><li>▪ Off-Street Parking</li><li>▪ Restrooms</li></ul>





### 3.0 PARKLAND INVENTORY

<b>Name:</b>	<b>Michigan Street Fishing Dock</b>
<b>Classification:</b>	Waterfront Recreation
<b>Address:</b>	362 Michigan St.
<b>Location:</b>	Located next to Boatworks, along the Fox River.
<b>Size:</b>	0.60 acres
<b>Parcel/s #:</b>	
<b>Amenities:</b>	<ul style="list-style-type: none"> <li>▪ Fox River</li> <li>▪ Fishing</li> <li>▪ Off-Street Parking</li> </ul>



### 3.0 PARKLAND INVENTORY

<b>Name:</b>	<b>Mill Street Boat Launch</b>
<b>Classification:</b>	Waterfront Recreation
<b>Address:</b>	1 Mill St
<b>Location:</b>	Located along the Fox River, south of Bay Shore Dr.
<b>Size:</b>	0.08 acres
<b>Parcel/s #:</b>	
<b>Amenities:</b>	<ul style="list-style-type: none"><li>▪ Fox River</li><li>▪ Boat Launch</li></ul>



### 3.0 PARKLAND INVENTORY

<b>Name:</b>	<b>Riverside Park</b>
<b>Classification:</b>	Waterfront Recreation
<b>Address:</b>	101 Ceape Ave
<b>Location:</b>	Located on the north side of the Fox River in the east-central part of the city next to Leach Amphitheater and the S Main St bridge.
<b>Size:</b>	2.03 acres
<b>Parcel/s #:</b>	90824342001 90824342002
<b>Amenities:</b>	<ul style="list-style-type: none"> <li>▪ Fox River</li> <li>▪ Open Space</li> <li>▪ Trails (paved)</li> <li>▪ Riverwalk</li> <li>▪ Fishing</li> <li>▪ Historical Interest</li> <li>▪ Off-Street Parking</li> <li>▪ Gazebo</li> </ul>
<b>Historical Note:</b>	<p>Mayor John Voss referred to this spot as "Riverside Park" in 1910. The Park Board liked and approved the name.</p> <p>.,The land had been donated in 1909 by lumberman William Bray in memory of his parents. Bray served in the Wisconsin Assembly in 1909 and was state senator 1915-1917.</p>





### 3.0 PARKLAND INVENTORY

<b>Name:</b>	<b>William A. Steiger Park</b>
<b>Classification:</b>	Waterfront Recreation
<b>Address:</b>	200 N Campbell Rd
<b>Location:</b>	Located on the south shore of the Fox River, next to the Oshkosh Senior Center.
<b>Size:</b>	2.52 acres
<b>Parcel/s #:</b>	90608010000
<b>Amenities:</b>	<ul style="list-style-type: none"> <li>▪ Fox River</li> <li>▪ Trails (paved)</li> <li>▪ Boat Launch</li> <li>▪ Fishing Dock</li> <li>▪ Historical Interest</li> <li>▪ Open Air Shelter</li> </ul>
<b>Historical Note:</b>	<p>William Steiger (1938-1978) represented the Sixth Congressional District from 1967 to 1978.</p> <p>Steiger obtained a federal grant in 1978 to help purchase the land that became Steiger Park in 1982. The area has long been a favorite fishing spot, once crowded with fishing shanties. Part of the old railroad bridge was preserved as a fishing dock for people with disabilities.</p>



### 3.0 PARKLAND INVENTORY

<b>Name:</b>	<b>Hiker Monument</b>
<b>Classification:</b>	Special Use Park
<b>Address:</b>	1401 Algoma Blvd
<b>Location:</b>	Located at the intersection of Congress Ave, Algoma Ave, and High Ave.
<b>Size:</b>	1.12 acres
<b>Parcel/s #:</b>	91200140000
<b>Amenities:</b>	<ul style="list-style-type: none"> <li>▪ Nature Area</li> <li>▪ Trails (unpaved)</li> <li>▪ Historical Interest</li> </ul>
<b>Historical Note:</b>	Monument to Spanish-American War Veterans





### 3.0 PARKLAND INVENTORY

<b>Name:</b>	<b>Leach Amphitheater</b>
<b>Classification:</b>	Special Use Park
<b>Address:</b>	300 Ceape Ave
<b>Location:</b>	Located in the east-central part of the city, along the Fox River, between the S. Main St bridge and the railroad tracks.
<b>Size:</b>	8.00 acres
<b>Parcel/s #:</b>	90800210000
<b>Amenities:</b>	<ul style="list-style-type: none"> <li>▪ Fox River</li> <li>▪ Open Space</li> <li>▪ Trails (paved)</li> <li>▪ Off-Street Parking</li> <li>▪ Riverwalk</li> <li>▪ Performance Stage</li> <li>▪ Restrooms</li> <li>▪ Concession Stands</li> <li>▪ Storage Shed</li> </ul>





### 3.0 PARKLAND INVENTORY

<b>Name:</b>	<b>Opera House Square</b>
<b>Classification:</b>	Special Use Park
<b>Address:</b>	315 N Main St
<b>Location:</b>	Located in the downtown area, along Main St.
<b>Size:</b>	1.01 acres
<b>Parcel/s #:</b>	90100010000
<b>Amenities:</b>	<ul style="list-style-type: none"> <li>▪ Open Space</li> <li>▪ Historical Interest</li> <li>▪ Benches</li> </ul>



### 3.0 PARKLAND INVENTORY

<b>Name:</b>	<b>Killian G. Spanbauer Field</b>
<b>Classification:</b>	Special Use Park
<b>Address:</b>	713 S Sawyer St
<b>Location:</b>	Located in the south-central part of the city, just north of W 9 <sup>th</sup> Ave, near Franklin Elementary School.
<b>Size:</b>	2.77 acres
<b>Parcel/s #:</b>	90606820000
<b>Amenities:</b>	<ul style="list-style-type: none"> <li>▪ Softball Field</li> <li>▪ Historical Interest</li> <li>▪ Benches</li> <li>▪ Off-Street Parking</li> </ul>
<b>Historical Note:</b>	<p>The South Side Lighted Diamond was renamed in 1989 to honor Killian G. Spanbauer (1927-1987), a local athlete, businessman and civic leader. The property had been a public baseball diamond since the 1940s. Spanbauer served on the Oshkosh City Council 1985 – 1987 and was president of Athlete's Foot of Wisconsin, Inc. He was founder of the Club 13 softball club and the Wisconsin Flyers basketball team.</p>



### 3.0 PARKLAND INVENTORY

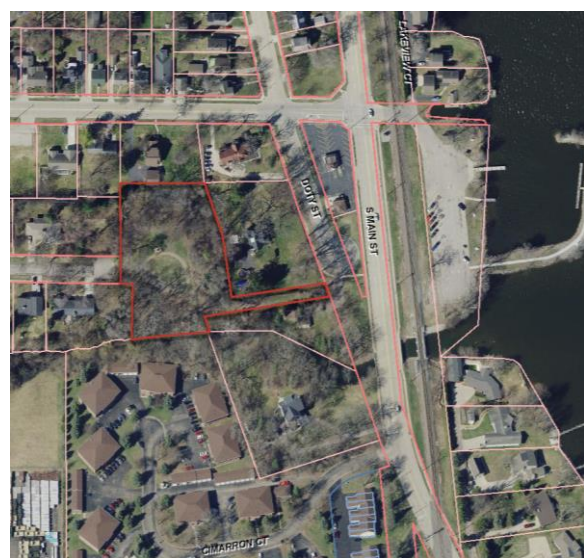
<b>Name:</b>	<b>Campbell Creek Marsh</b>
<b>Classification:</b>	Natural Resource Area
<b>Location:</b>	Located in the parcel bounded by Witzel, North Campbell Road, Josslyn Street and Taft Avenue.
<b>Size:</b>	26.5 acres
<b>Amenities:</b>	<ul style="list-style-type: none"><li>▪ Nature Area</li></ul>





### 3.0 PARKLAND INVENTORY

<b>Name:</b>	<b>Glatz Nature Park</b>
<b>Classification:</b>	Natural Resource Area
<b>Address:</b>	120 W 25th Ave
<b>Location:</b>	Located on the city's south side, across from 24 <sup>th</sup> Avenue Boat Launch.
<b>Size:</b>	1.77 acres
<b>Parcel/s #:</b>	91413370400
<b>Amenities:</b>	<ul style="list-style-type: none"> <li>▪ Nature Area</li> <li>▪ Trails (unpaved)</li> <li>▪ Historical Interest</li> </ul>
<b>Historical Note:</b>	<p>Glatz Nature Preserve was dedicated on bicentennial day, July 4, 1976, with Glatz family members present.</p> <p>John Glatz and Christian Elser established a brewery on this site in 1869, that eventually turned into the Oshkosh Brewing Company. The brewery was dismantled in 1914, leaving the foundation walls and caverns. In 1976, the city purchased the two acre site for a nature park. With a lot of community assistance, the caverns were cleared out and reinforced, an entrance and trails created, and a fence constructed. Today after years of damage and neglect, only one wall of the brewery remains– the oldest surviving brewing structure in the city.</p>



### 3.0 PARKLAND INVENTORY

<b>Name:</b>	<b>North High Conservancy</b>
<b>Classification:</b>	Natural Resource Area
<b>Address:</b>	1200 Morgan Ave
<b>Location:</b>	Located in the north part of the city, adjacent to Oshkosh North High School.
<b>Size:</b>	12.19 acres
<b>Parcel/s #:</b>	91219400100
<b>Amenities:</b>	<ul style="list-style-type: none"><li>▪ Retention Pond</li><li>▪ Nature Area</li><li>▪ Trails (unpaved)</li></ul>





### 3.0 PARKLAND INVENTORY

<b>Name:</b>	<b>Rusch Park</b>
<b>Classification:</b>	Natural Resource Area
<b>Address:</b>	3200 West 20th Ave
<b>Location:</b>	Located in the southwest part of the city, next to Traeger Middle School.
<b>Size:</b>	41.27 acres
<b>Parcel/s #:</b>	91333010000
<b>Amenities:</b>	<ul style="list-style-type: none"> <li>▪ Boardwalk</li> <li>▪ Sawyer Creek</li> <li>▪ Nature Area</li> <li>▪ Open Space</li> <li>▪ Trails (paved and unpaved)</li> </ul>

