



Excellence in Engineering Since 1946



Sawyer Creek Channel Improvements

**Public Information Meeting
October 26, 2011**

■ Introductions

■ City Engineering Staff

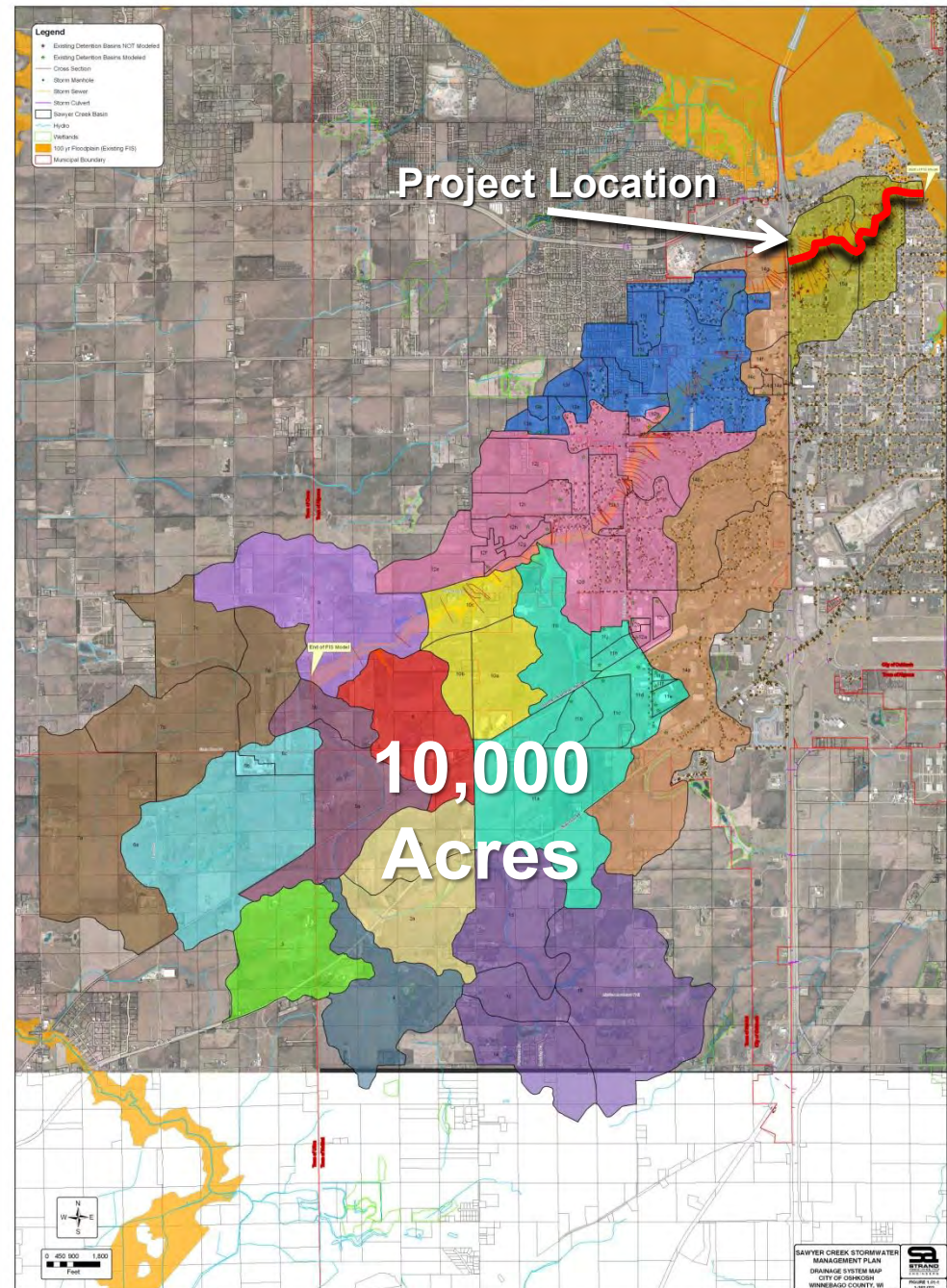
- David Patek – Director of Public Works
- Steve Gohde – Assistant Director of Public Works
- Jame Rabe – Civil Engineer II

■ Strand Associates Inc.®

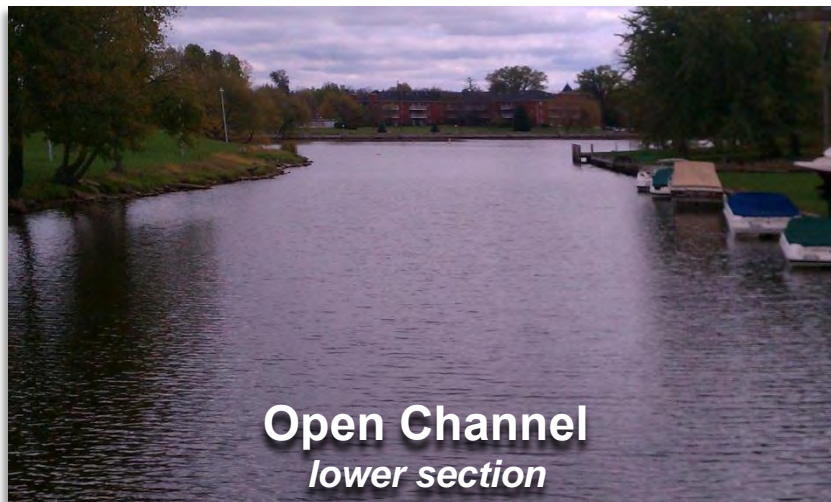
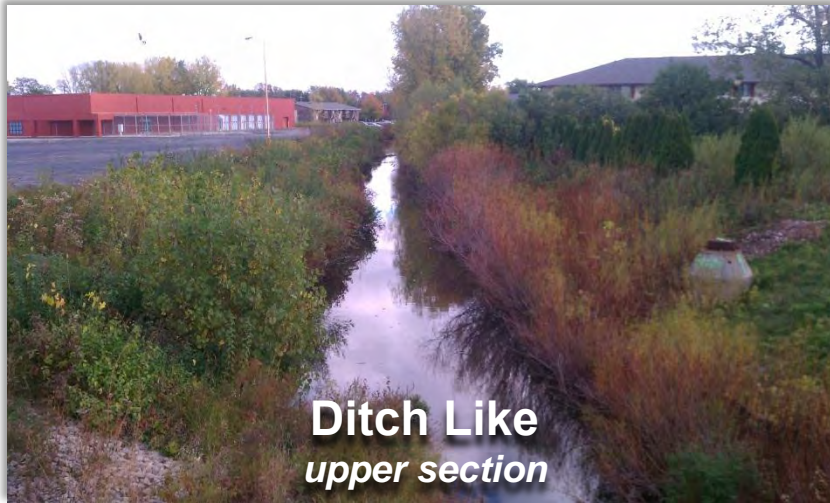
- Matt Yentz – Project Manager

Sawyer Creek Watershed

| Municipality | Area (Acres) | Area (%) |
|-----------------|--------------|-------------|
| City of Oshkosh | 3,182 | 31.7 |
| Town of Algoma | 1,409 | 14.1 |
| Town of Omro | 954 | 9.5 |
| Town of Nekimi | 3,015 | 30.1 |
| Town of Utica | <u>1,466</u> | <u>14.6</u> |
| Total | 10,026 | 100% |



Existing Channel



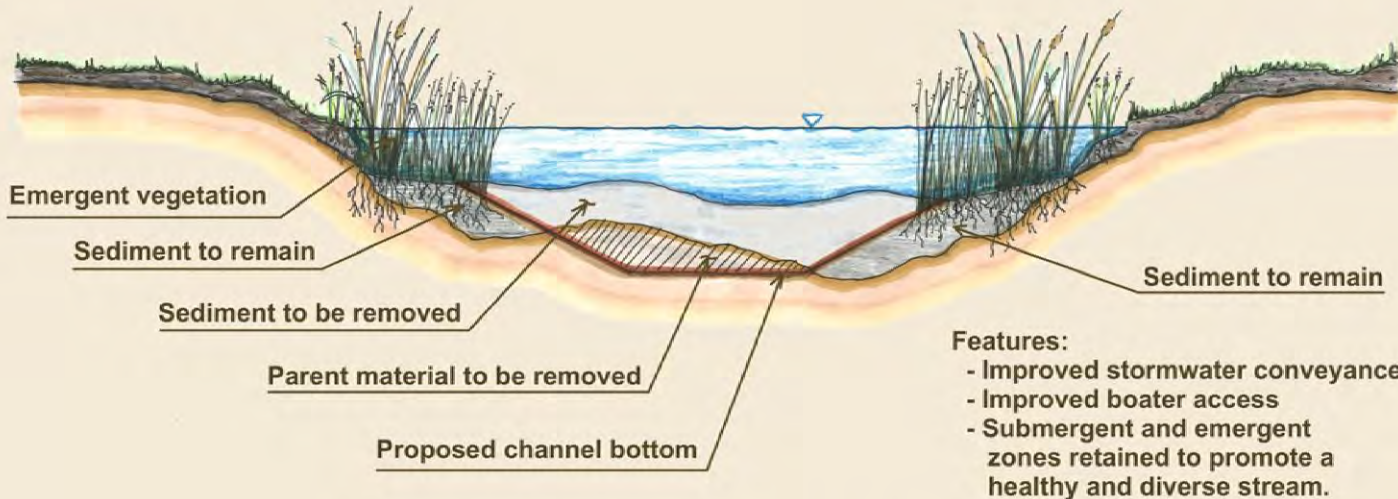
Project Limits



Proposed Improvements – Channel

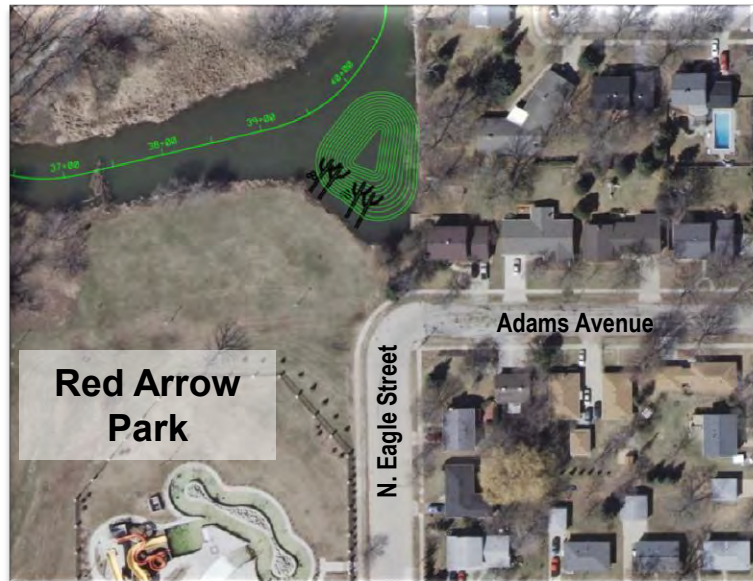
Project Facts:

- Length - 7,000 lineal feet
- Sediment depth - up to 5-feet (2-Foot Average depth)
- Sediment volume to be removed - 30,000 to 40,000 cubic yards
- Volume comparison - equal to the volume of the Westhaven club house detention basin



Proposed Channel Section

Proposed Improvements – Channel



Proposed Improvements – Invasive Plant Removal

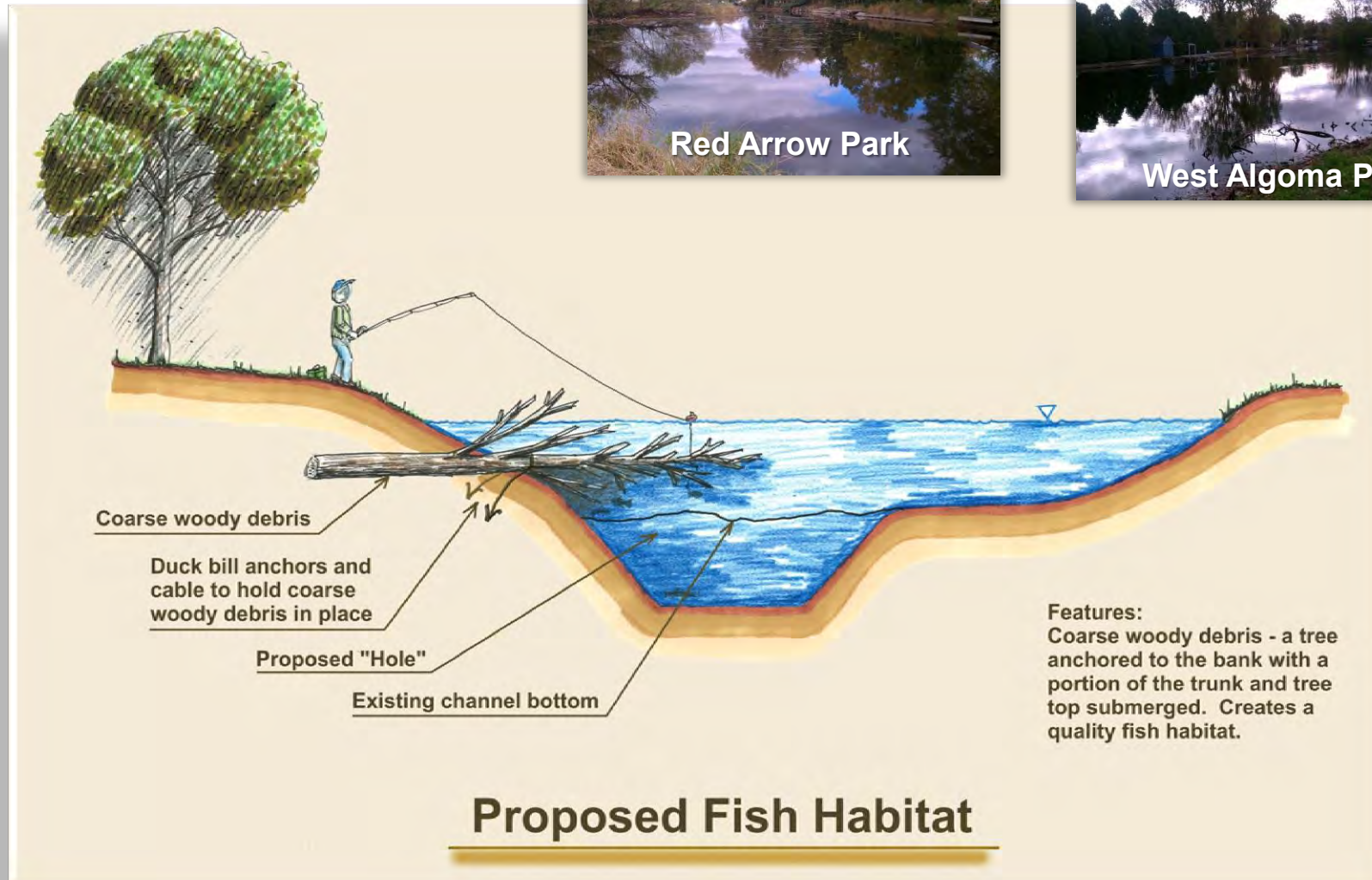


Spreads Rapidly

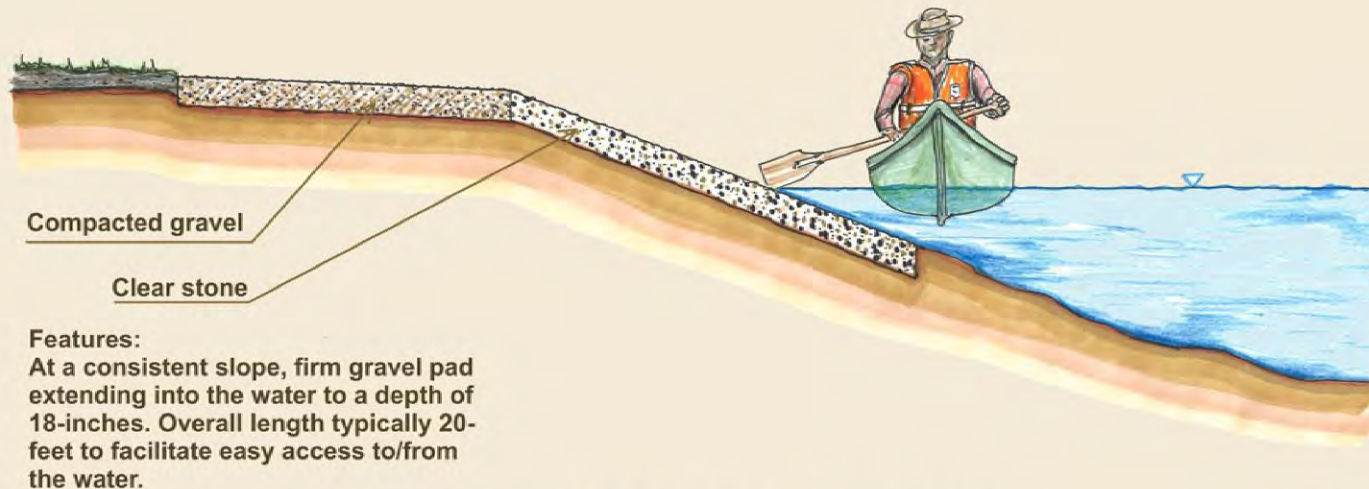
**Degrades
Natural
Communities**

**Destroys
Wildlife Habitat**

Proposed Improvements – Fish Habitat



Proposed Improvements – Canoe Access



Canoe Access / Launch

Proposed Improvements – Slope Stabilization



Proposed Bank Restoration

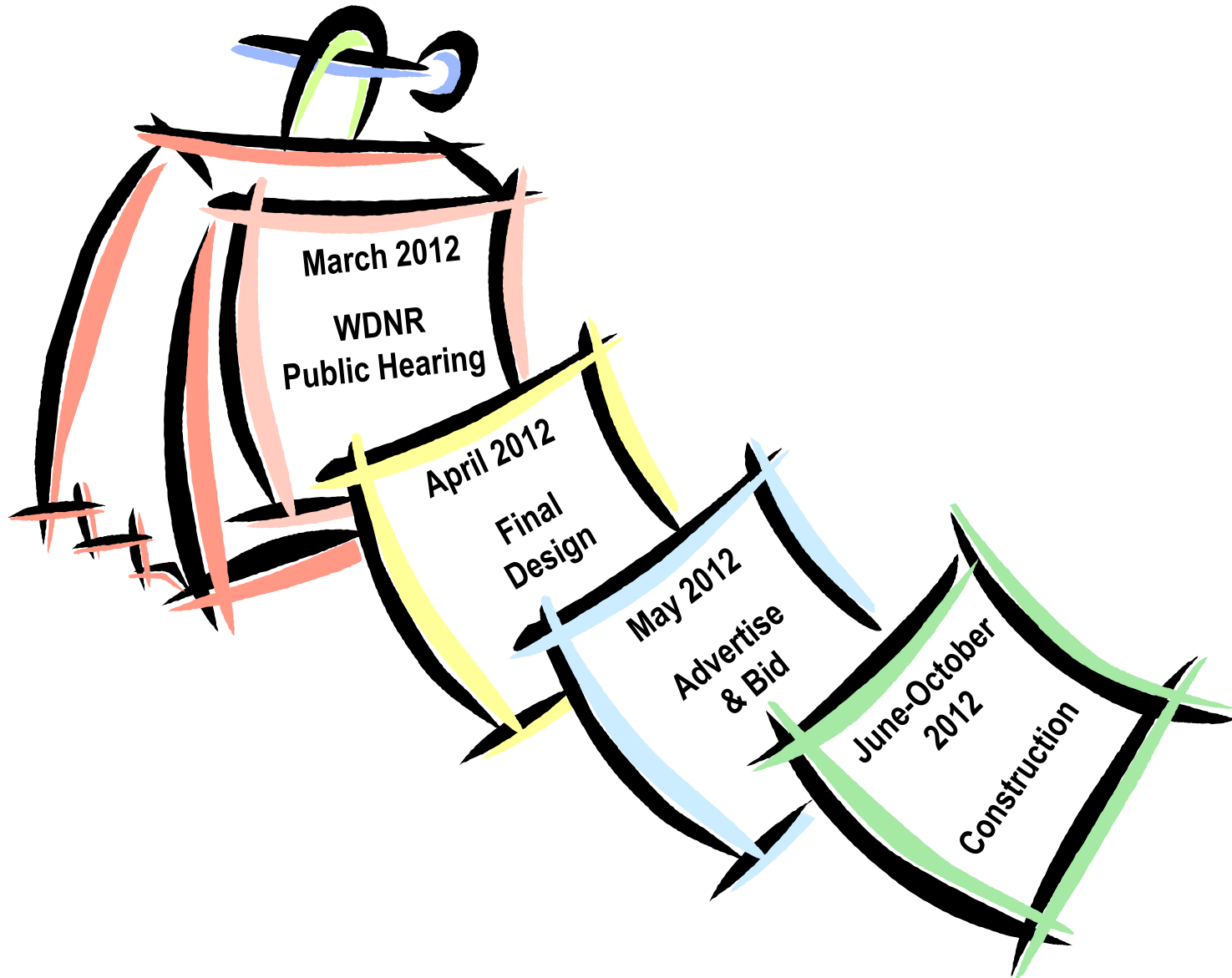
Proposed Dredging Features



Oshkosh Northwestern photo by Joe Sienkiewicz



■ 2012 Schedule



Opinion of Construction Cost



**Estimated
Project Cost**

• \$1.5 to 2 million

**Estimated
Sediment Removal**

• 30,000 to 40,000 cubic yards

Thank You for Your Time!



Questions and Answers



Excellence in Engineering Since 1946