



2020 HOUSING AFFORDABILITY REPORT

City of Oshkosh, December, 2021

Prepared by the City of Oshkosh
Department of Community Development
with assistance from the East Central
Wisconsin Regional Planning Commission

Table of Contents

EXECUTIVE SUMMARY	1
HOUSING AFFORDABILITY REPORT REQUIREMENTS	1
HOUSING AFFORDABILITY DATA & RESPONSES	2
Undeveloped Parcels Zoned for Residential Development.....	3
Undeveloped Parcels with Available Public Facilities/Services	3
Plans & Regulations	4
Financial Impact of Plans & Regulations.....	7
MODIFICATION OF CONSTRUCTION & DEVELOPMENT REGULATIONS	7
Housing Demand.....	8
Housing Cost Burden.....	8
Reductions in Time and Cost.....	10
APPENDICES	
APPENDIX A: PARCEL ANALYSIS MAPS & TABLES	A-1
APPENDIX B: FUTURE LAND USE MAP	B-1

HOUSING AFFORDABILITY REPORT

EXECUTIVE SUMMARY

In 2018, the Wisconsin State Legislature approved new legislation which requires communities of 10,000 population or more to provide two separate annual reports related to housing and housing fees in an effort to shed light and foster change on affordable housing issues across the state. The City of Oshkosh, along with 11 other communities in the region, elected to contract with the East Central Wisconsin Regional Planning Commission to prepare these reports. As such, a Housing Report Advisory Team was created so that input and feedback from all communities could be considered as the reports were prepared. Specifically, this document meets the requirements for Wis. Stats. 66.10013 (Housing affordability report).

HOUSING AFFORDABILITY REPORT REQUIREMENTS

Requirements of this report include the following elements:

1. In this section, "municipality" means a city or village with a population of 10,000 or more.
2. Not later than January 1, 2022, a municipality shall prepare a report of the municipality's implementation of the housing element of the municipality's comprehensive plan under s.66.1001. The municipality shall update the report annually, not later than January 31. The report shall contain all of the following:
 - a. The number of subdivision plats, certified survey maps, condominium plats, and building permit applications approved in the prior year.
 - b. The total number of new residential dwelling units proposed in all subdivision plats, certified survey maps, condominium plats, and building permit applications that were approved by the municipality in the prior year.
 - c. A list and map of undeveloped parcels in the municipality that are zoned for residential development.
 - d. A list of all undeveloped parcels in the municipality that are suitable for, but not zoned for, residential development, including vacant sites and sites that have potential for redevelopment, and a description of the zoning requirements and availability of public facilities and services for each property.
 - e. An analysis of the municipality's residential development regulations, such as land use controls, site improvement requirements, fees and land dedication requirements, and permit procedures. The analysis shall calculate the financial impact that each regulation has on the cost of each new subdivision. The analysis shall identify ways in which the municipality can modify its construction and development regulations, lot sizes, approval processes, and related fees to do each of the following:
 - i. Meet existing and forecasted housing demand, and;
 - ii. Reduce the time and cost necessary to approve and develop a new residential subdivision in the municipality by 20 percent.

HOUSING AFFORDABILITY DATA & RESPONSES

Part 2A: The number of subdivision plats, certified survey maps, condominium plats, and building permit applications approved in the prior year (2020) for the City of Oshkosh is illustrated in Table 1.

Table 1: City of Oshkosh Approved Plats, CSMs and Building Permits, 2020

Subdivision Plats	Certified Survey Maps	Condominium Plats	Single Family Building Permits	Two-Family Building Permits	Multi-Family Building Permits	Mobile Home Building Permits
0	14	1	49	14	120	9

Source: City of Oshkosh Planning Services and Inspection Services Divisions

Part 2B: The total number of new residential dwelling units proposed in all subdivision plats, certified survey maps, condominium plats, and building permit applications that were approved by the municipality in the prior year (2020) for the City of Oshkosh is illustrated in Table 2.

Table 2: City of Oshkosh New Residential Dwelling Units Proposed and Approved within Plats and CSMs, 2020

Residential Dwelling Units (Subdivision Plats)	Residential Dwelling Units (Certified Survey Maps)	Residential Dwelling Units (Condominium Plats)	Single Family Building Units	Two-Family Building Units	Multi-Family Building Units	Mobile Home Building Units
0	188	0	4	0	184	0

Source: City of Oshkosh Planning Services and Inspection Services Divisions

Parts 2C/2D: A list and map of undeveloped parcels in the municipality that are zoned for residential development. A list of all undeveloped parcels in the municipality that are suitable for, but not zoned for, residential development, including vacant sites and sites that have potential for redevelopment, and a description of the zoning requirements and availability of public facilities and services for each property.

Maps for the City of Oshkosh were developed using a variety of GIS data sources and are contained in Appendix A. From a process standpoint, these maps were developed using the following methodologies:

Undeveloped Parcels Zoned for Residential Development

1. Map 1 was created by using current tax parcel data (circa December, 2021). A subset of "vacant" parcels was created by selecting all parcels which had no "improvement value" on the property.
2. Current zoning districts for the City were overlaid on this subset of vacant parcels and additional parcels were removed as necessary (i.e. storm water ponds, larger areas of institutional lands which have no development potential, etc.).
3. The final map illustrates vacant parcels that contain "residential" zoning and those that are "non-residential" (i.e. commercial, industrial, institutional, etc.) in nature.

4. Table 3 provides a listing of parcels along with additional property characteristics.

Undeveloped Parcels with Available Public Facilities/Services

Map 2 and its associated parcel table are contained in Appendix A and were created using the aforementioned data layers, plus the inclusion of municipal water and sewer line location data.

1. Municipal sewer and water line data was obtained, typically with service lines being located in the road rights-of-way.
2. A 100-foot 'buffer' was applied to either side of these service lines.
3. Any of the vacant residential/non-residential zoned parcels which fell partly within this 100-foot buffer were selected to produce a map showing which undeveloped parcels have services available.

Part 2E: An analysis of the municipality's residential development regulations, such as land use controls, site improvement requirements, fees and land dedication requirements, and permit procedures. The analysis shall calculate the financial impact that each regulation has on the cost of each new subdivision. The analysis shall identify ways in which the municipality can modify its construction and development regulations, lot sizes, approval processes, and related fees to: 1) Meet existing and forecasted housing demand, and; 2) Reduce the time and cost necessary to approve and develop a new residential subdivision in the municipality by 20 percent.

Plans & Regulations

The City of Oshkosh has a number of plans, policies, regulations and fee/permit requirements which guide land use and matters pertaining to residential housing development. The City of Oshkosh's comprehensive plan, adopted in 2018 and includes a future land use map, dated October, 2018 (Appendix B). The future land use map illustrates the preferred land use and sets forth the broad policy decisions regarding the location and types of housing that are envisioned in the future. This document is of primary importance in that it sets the tone for addressing affordable housing opportunities and guiding development decisions (Map 3). This plan addresses many aspects of housing, including affordable housing and key aspects of the plan are shown in Table 5 below which were derived from a survey sent by East Central WI RPC to the City.

Question / Topic Regarding Comprehensive Plan	Response / Details
What year was your comprehensive plan adopted?	2018
Since its adoption, have amendments been made to the plan to accommodate residential development?	Yes
What year is next scheduled/planned 10-year update for the Comprehensive Plan?	2025+
Were specific concerns about affordable housing brought up by your plan commission, business community or residents during the plan development process for your current comprehensive plan?	Yes
If yes, was affordable housing a community issue at that time, or was it alluded to as a future issue?	Yes

Were there any housing-related organizations or individuals involved in the development of the current comprehensive plan (or its housing element)?	Yes
Is there a dedicated municipal Committee responsible for implementing and monitoring all/portions of the housing element of the current comprehensive plan?	No
Does the housing element of the current comprehensive plan get referenced/reviewed formally during new housing development proposals (re-zonings, platting, etc.)?	Yes
Is there dedicated municipal staff which lead, or assist, in the implementation and monitoring of the current comprehensive plan's housing element?	No
Are there existing non-profit organizations involved in the implementation of the current comprehensive plan's housing element?	Yes, Housing Authority, Habitat for Humanity, GOHNI
Were existing zoning ordinances, subdivision regulations or other codes/ordinances significantly modified after the plan's adoption to better align with the housing element?	2017 Zoning update - allowed residential uses in all mixed development zone districts throughout city.
Please list specific goal/objective/strategy/recommendation/action items within the housing element that have been implemented or addressed to any degree (including planned/pending implementation).	H-1 to H-4 page 3-1 H1 - H4 pages 3-15 to 3-17. There's about 30 of them; H-1.1 to H-4.1. We have been working on all of the objectives and actions listed.
Are you a CDBG-Entitlement Community that has prepared an Impediments to Fair Housing study?	Yes
Have you completed other housing market or assessment studies	Yes
What limiting factors are present which prevent your community from moving forward on further implementation of the current comprehensive plan's housing element? Please describe.	Funding for housing rehab and new residential construction. CDBG is good for rehab, not new construction. City is looking at providing/creating new funding for new construction on existing lots like the City of Green Bay.

Additional plans, policies and regulations have been adopted by the City to address residential housing including:

- City of Oshkosh Comprehensive Plan (Chapter 3) outlines basic housing goals and objectives.
- City of Oshkosh Comprehensive Plan (Chapter 4) outlines basic land use goals and development objectives.
- City of Oshkosh Zoning Ordinance (Chapter 30) outlines basic land use requirements, lot sizes and property line setbacks.

- City of Oshkosh Subdivision Ordinance (Article XIII), found under Chapter 30, regulates and controls the division of land or the creation of a condominium with the corporate limits (currently being updated with anticipated adoption in early 2022).
- City of Oshkosh Housing Ordinance (Chapter 16) outlines various standards for housing, including basement houses, antidiscrimination in housing and mobile homes and mobile home parks.
- Plan Review & Building Permit procedures have been adopted by the City of Oshkosh and are reviewed periodically.
- Development Standards & Specifications for residential subdivisions are in place and are typically implemented through a Development Agreement. In most cases, the developer is responsible for the entire initial cost of infrastructure including, but not limited to: roads, curb, gutter, storm water, sewer and water mains. Once the infrastructure meets the standards, the community will take ownership and be responsible for future maintenance (unless otherwise noted in the Developer's Agreement). In some cases, cost-sharing, credits, or deferred assessments will be provided. While the construction of infrastructure is a major consideration in the overall cost of housing, this report has made no attempt to calculate these costs as they can vary greatly depending on size and density of the subdivision, as well as other geographic factors. It should be noted that in general, higher density developments reduce infrastructure costs relative to low density ones. The development community has not fully utilized the ability to create such developments which therefore impacts the cost of housing.
- Fees have been adopted for various activities related to housing development. These fees are outlined in detail in the accompanying Housing Fee Report (2019). The City of Oshkosh currently has several types of fees schedules published on its website which may apply to new housing development:
 - Building Permit Fee Schedule
 - Electrical Permit Fee Schedule
 - Erosion Control Permit Fee Schedule
 - HVAC Permit Fee Schedule
 - Miscellaneous Permit Fee Schedule
 - Plumbing & Sewer Permit Fee Schedule
 - Storm water Permit Fee Schedule
- An Analysis of Impediments to Fair Housing (2013) report is currently being updated. This report was prepared for use as a planning tool to ensure equal housing opportunities for all persons in the City of Oshkosh. The report has three main components: an analysis of demographic and economic characteristics in relation to their impact on fair housing; a description of fair housing impediments; and recommendations designed to dismantle impediments.
- Imagine Oshkosh, A Master Plan for Our Center City (2017) report is a long-term vision and comprehensive investment strategy for the entire Center. This report provides recommendations related to housing and residential areas within and adjacent to the Center City study area.

- Envision North Jackson Plan (2020) describes future goals and objectives for land use and development in the plan area. The plan focuses on the Jackson Street corridor from Murdock Avenue north to Interstate 41.
- A Place in Oshkosh: A Housing Needs Assessment and Strategy Plan (2022) prepared to develop goals and actions to address housing needs and housing affordability in the city.
- Tax Increment Finance Districts.
 - TID #12 - Division Street Redevelopment and Housing Redevelopment was created to address blight.
 - TID #13 – Marion Road/Pearl Avenue Redevelopment, Commercial and Housing Development was created to address blight.
 - TID #14 – Hazel Street/Mercy Medical Center Redevelopment and Housing Redevelopment & Rehabilitation was created to address blight.
 - TID #16- 100 Block Redevelopment, Commercial and Housing Development was created to address blight.
 - TID #20- South Shore Redevelopment Area, Commercial and Housing Development was created to address blight.
 - TID #21- Fox River Corridor Project Area, Commercial and Housing Development was created to address blight.
 - TID #28 - Beach Building Redevelopment, Commercial and Housing Development was created to address blight.
 - TID #29 - Morgan District Redevelopment Area, Commercial and Housing Development was created to address blight.
 - TID #30 - Washington Building Redevelopment, Housing Development was created for rehabilitation and conservation.
 - TID #33 - Lamico Redevelopment, Housing Development was created to address blight.
 - TID #36 - Merge Redevelopment, Commercial and Housing Development was created to address blight.
 - TID #39 – Cabrini School Redevelopment, Commercial conversion of a former school to senior housing was created for rehabilitation and conservation and to address blight.
 - TID # 40 - Miles Kimball Redevelopment, Commercial conversion of a former industrial building to housing was created for rehabilitation and conservation and to address blight.
 - TID 41 – Smith School Redevelopment, Commercial conversion of a former school to housing was created for rehabilitation and conservation and to address blight.

Financial Impact of Plans & Regulations

The financial impacts of local regulations are outlined in the City of Oshkosh Housing Fee Report (2020). Regulations enforced by federal and state government also contributed to the increase in costs for development, yet municipalities have no control over these regulations or the associated costs to enforce. Wisconsin has adopted a state-wide uniform building code, which establishes standards for residential dwelling units. In addition, the requirements of NR216 have

substantially increased the cost of storm water management. Under NR216, municipalities are required to reduce storm water runoff by implementing storm water management programs. These programs include construction site pollutant control, post- construction storm water management, etc. Furthermore, restrictive covenants imposed by developers may also add cost to development by setting architectural guidelines, types of exterior building materials, structural design or dictating the size of a dwelling unit.

MODIFICATION OF CONSTRUCTION & DEVELOPMENT REGULATIONS

This analysis identifies ways in which the municipality can modify its construction and development regulations, lot sizes, approval processes, and related fees in order to do each of the following: (1) Meet existing and forecasted housing demand, and; (2) Reduce the time and cost necessary to approve and develop a new residential subdivision in the municipality by 20 percent.

Housing Demand

Housing demand for the City of Oshkosh has been calculated using accepted methodologies developed by the East Central Wisconsin Regional Planning Commission. In this case, two components were evaluated: a) forecasted housing and land use demands by unit type, and; b) existing housing cost burden.

Based on Wisconsin Department of Administration and U.S. Census data, Tables 6 and 7 illustrate the forecast household growth for the City and the corresponding demands by housing unit type using existing land use density information.

Table 6: City of Oshkosh Year 2040 Household Projections

Municipality	2010	2015	2020	2025	2030	2035	2040	Diff. 2040 - 2010
City of Oshkosh	26,138	26,796	27,965	28,936	29,742	30,190	30,309	4,171

Source: WDOA, Wisconsin Demographic Services Center, Vintage 2013 Population Projections

Table 7: City of Oshkosh Year 2040 Projected Housing & Land Use Demands

Municipality	Adjusted Remaining Units Needed (2019-2040)			Development Density			Acres Needed		
	SF	TF	MF	SF	2F	MF	SF	TF	MF
City of Oshkosh	2,395	443	113	5.00	10.00	11.71	479	44	10

Source: ECWRPC, 2019

Housing Cost Burden

Table 8 illustrates the current "Housing Cost Burden" for City of Oshkosh households. For any particular household income category, the corresponding number which spent 30% or more of their income on housing costs is shown. In general, those with lower incomes are more burdened. However it is interesting to note that the City of Oshkosh's numbers overall do not vary much from the urbanized area average as a whole.

Table 8: City of Oshkosh and Regional Housing Burden (2015-2019)

Household Income & Percent Spent on Housing Costs	Urbanized Area Regional Total (Fox Cities*, Oshkosh & Fond du Lac)		City of Oshkosh	
	Estimates	% Total (30% or More)	Estimates	% Total (30% or More)
Total Owner-occupied housing units:	78,387	16.9%	14,653	18.4%
Less than \$20,000:	4,659		972	
30 percent or more	4,025	86.4%	830	85.4%
\$20,000 to \$34,999:	8,212		1,992	
30 percent or more	4,026	49.0%	967	48.5%
\$35,000 to \$49,999:	9,384		1,681	
30 percent or more	2,661	28.4%	421	25.0%
\$50,000 to \$74,999:	16,598		3,223	
30 percent or more	1,896	11.4%	338	10.5%
\$75,000 or more:	39,152		6,632	
30 percent or more	621	1.6%	145	2.2%
Zero or negative income	382	n/a	153	n/a
Total Renter-occupied housing units:				
Total Renter-occupied housing units:	44,688	39.2%	11,981	40.6%
Less than \$20,000:	10,169		3,009	
Less than 20 percent	139	1.4%	61	2.0%
20 to 29 percent	849	8.3%	291	9.7%
30 percent or more	9,181	90.3%	2,657	88.3%
\$20,000 to \$34,999:	10,814		2,937	
Less than 20 percent	661	6.1%	155	5.3%
20 to 29 percent	3,359	31.1%	1,032	35.1%
30 percent or more	6,794	62.8%	1,750	59.6%
\$35,000 to \$49,999:	8,037		2,007	
Less than 20 percent	2,423	30.1%	663	33.0%
20 to 29 percent	4,346	54.1%	999	49.8%
30 percent or more	1,268	15.8%	345	17.2%
\$50,000 to \$74,999:	7,869		2,111	
Less than 20 percent	5,346	67.9%	1,474	69.8%
20 to 29 percent	2,282	29.0%	538	25.5%
30 percent or more	241	3.1%	99	4.7%
\$75,000 or more:	6,187		1,511	
Less than 20 percent	5,762	93.1%	1,455	96.3%
20 to 29 percent	401	6.5%	48	3.2%
30 percent or more	24	0.4%	8	0.5%
Zero or negative income	555	n/a	161	n/a
No cash rent	1,057	n/a	245	n/a

Source: 2015-2019 ACS 5-Year Estimates, B25106

*Fox Cities include the Cities of Appleton, Neenah, Menasha & Kaukauna and Villages of Combined Locks, Fox Crossing, Harrison, Hortonville, Kimberly, Little Chute & Sherwood

Based on this information more affordable homes and rentals are needed within the City, particularly for those with lower incomes. However, providing affordable housing involves more than reducing costs imposed by municipalities or revising local policies. Policies imposed by others and limited funding also affect housing affordability. The U.S. Department of Housing and Urban Development provides housing choice vouchers for very low-income families to reduce the cost of housing. Yet, this program has not been expanded in years and does not supply a sufficient supply of vouchers to address housing affordability for renters. Other programs correspondingly provide assistance for low-income renters and homeowners but these programs likewise fall short of the needs. Banks and other financial institutions must also accept some of the responsibility since they must approve financing for affordable housing.

Reductions in Time and Cost

In order to reduce the time and cost necessary to approve and develop a new residential subdivision in the municipality by 20 percent, a number of things need to be taken into consideration.

1. Where exactly this burden should be placed? Should this burden be placed on the public sector entirely? Or should the private sector (homebuilders, realty professionals, etc.) share some of this burden? Housing style, design, size and materials choice make up a large portion of the cost of housing. When the development community places restrictive covenants on subdivisions, this inherently increases the costs for housing.
2. The cost of infrastructure and maintenance was not part of the state's requirement to analyze and include in this report yet is a critical factor for the costs associated with new housing development. Furthermore, state imposed levy limits further impact the municipalities' ability to maintain or construct new infrastructure.
3. Lastly, as noted in the Housing Fee Report, a number of additional costs are imposed by county, state or local entities (sanitary districts) for things such as plumbing plan reviews, utility assessments and the like. These items are not even considered in the statutory requirements for this report and not in the purview of the municipality to control.

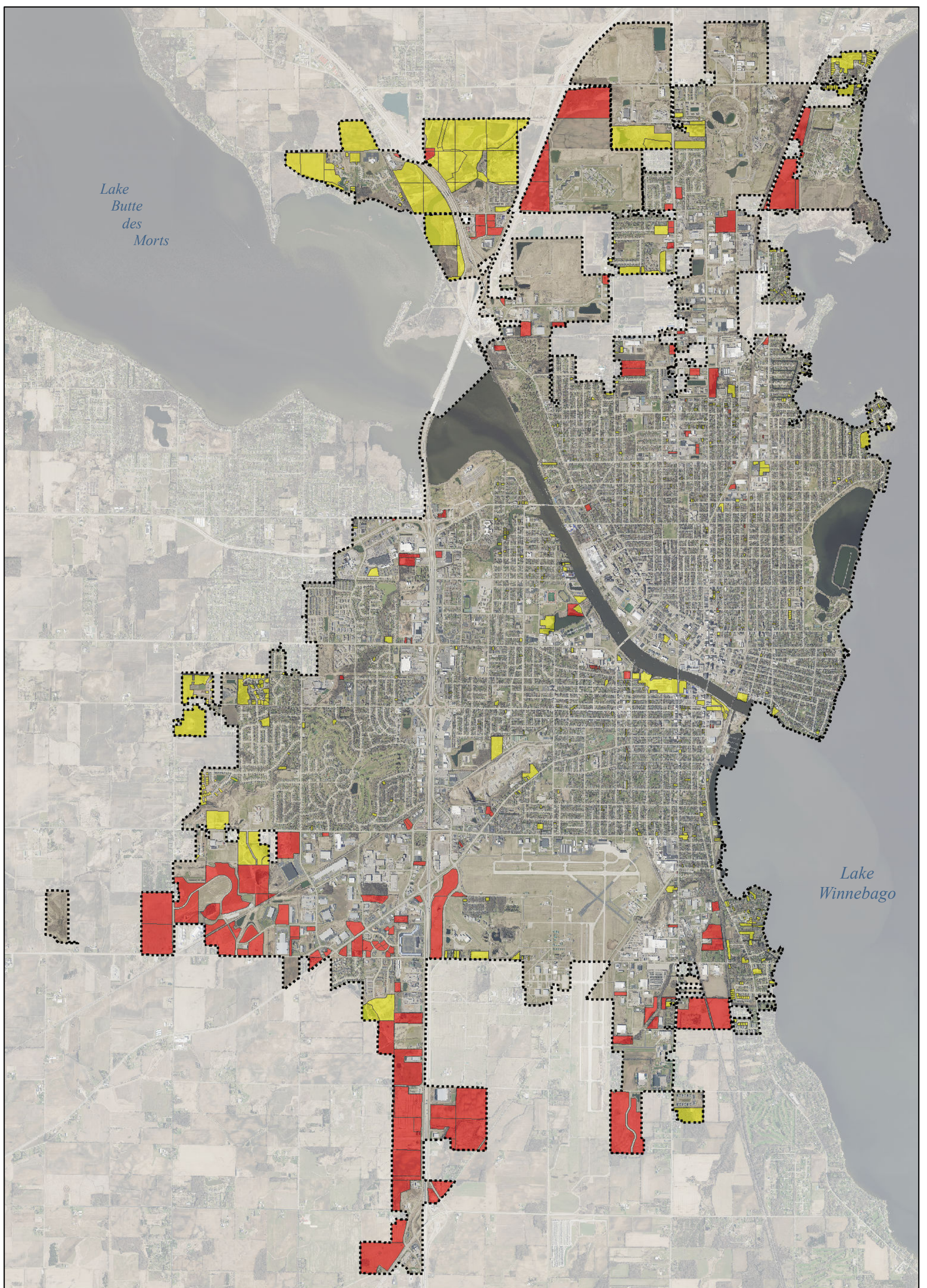
The City of Oshkosh could, of course, simply slash the costs of its various permits and fees by 20%, thereby reducing the amount of revenue generated (see Housing Fee Report). This revenue is used by the City to fund the necessary services and safety inspections that are required by state law and/or are simply good practice. By cutting fees 20%, it is likely that the plan review, approval and permit issuance processes will take longer due to reduced staffing and capacity.

The City could also reduce minimum lot sizes, but would this actually encourage smaller more affordable houses? Reducing parking requirements and street width could potentially reduce the cost to build and maintain infrastructure, making housing more affordable. The added benefit is that this would not only reduce infrastructure costs but would also reduce storm water runoff from impervious surfaces. While the City could make a number of changes, ultimately it is whether or not the development community takes advantage of changes in order to create more affordable homes. Taking this a step further, new models of housing development such as Cottage-Style developments or Accessory Dwelling Units (ADUs), or new public-private financing partnerships could be looked at as a way to further reduce housing costs. Partnerships with non-profit organizations such as Habitat for Humanity have also proven successful. Reductions in time could reduce costs; however, developers and the state also play a role in the process (cost) to

approve a new residential subdivision. For example an incomplete application will necessitate additional time by the developer to submit further information. Plats must be approved following state statute 236, which clearly sets out procedures which must be followed by an entity approving a plat. If the proposed development is outside of a municipality, it must first be annexed into the community. Again the process to annex properties is also laid out in the state statutes (66.0217, 66.0219, 66.0221 and 66.0223), and municipalities must follow these procedures. Municipalities may be able to incorporate additional efficiencies in the subdivision review process which may impact the time necessary to approve a plat.

APPENDICES



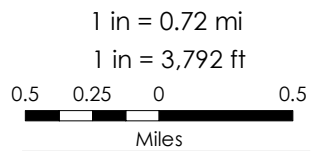


Lake
Butte
des
Morts

Lake
Winnebago

Map 1
2020 Vacant Parcels with Residential & Non-Residential Zoning

The City of Oshkosh creates and maintains GIS maps and data for its own use. They may show the approximate relative location of property, boundaries and other feature from a variety of sources. These map(s)/datasets are provided for information purposes only and may not be sufficient or appropriate for legal, engineering, or surveying purposes. They are provided "AS-IS" without warranties of any kind and the City of Oshkosh assumes no liability for use or misuse.



Printing Date: 12/29/2021

Prepared by: City of Oshkosh, WI

Vacant Parcels: 774, 2,225.56 Acres

- Zoned Non-Residential: 161, 1,259.28 Acres
- Zoned Residential: 613, 966.258 Acres

Table 3: Vacant Parcels with Residential and Non-Residential Zoning

Tax ID	Street Location	Acres	Zoning		
			Zoning Code	Residential	Non-Residential
91329400000	UNIVERSAL ST	1.58	BP		Business Park
91329400100	UNIVERSAL ST	0.85	BP		Business Park
91329400400	ENTERPRISE DR	3.82	BP		Business Park
91329400503	ENTERPRISE DR	1.05	BP		Business Park
91329400504	ENTERPRISE DR	1.47	BP		Business Park
91329400900	UNIVERSAL CT	0.69	BP		Business Park
91329401500	ENTERPRISE DR	0.95	BP		Business Park
91329401600	ENTERPRISE DR	1.02	BP		Business Park
91329401700	ENTERPRISE DR	1.01	BP		Business Park
91329401800	UNIVERSAL ST	0.93	BP		Business Park
91329401900	W WAUKAU AVE	1.24	BP		Business Park
91329450000	STATE ROAD 44	8.38	BP		Business Park
91519370300	DOCTORS CT	0.14	BP		Business Park
Business Park Total:			23.13	Acres	
91329103100	STATE ROAD 91	2.26	BP-PD		Business Park PD Overlay
91329103201	STATE ROAD 91	1.34	BP-PD		Business Park PD Overlay
91329103301	STATE ROAD 91	0.01	BP-PD		Business Park PD Overlay
91329104000	STATE ROAD 91	3.73	BP-PD		Business Park PD Overlay
91329470000	STATE ROAD 44	2.47	BP-PD		Business Park PD Overlay
Business Park PD Overlay Total:			9.81	Acres	
91610870801	OSHKOSH AVE	1.32	CBP-PD		Corporate Business Park PD Overlay
91610900000	RATH LN	0.20	CBP-PD		
91610940000	OSHKOSH AVE	0.29	CBP-PD		
Corporate Business Park PD Overlay Total:			1.81	Acres	
90301010000	W 8TH AVE	0.10	CMU	Central Mixed-Use	
90302140000	OREGON ST	0.09	CMU	Central Mixed-Use	
90303280000	OREGON ST	0.11	CMU	Central Mixed-Use	
90900690000	W 9TH AVE	0.14	CMU	Central Mixed-Use	
Central Mixed-Use Total:			0.44	Acres	
90302450000	W 10TH AVE	0.17	CMU-PD	Central Mixed-Use PD Overlay	
90303090000	W 11TH AVE	0.04	CMU-PD	Central Mixed-Use PD Overlay	
90303100000	S MAIN ST	0.11	CMU-PD	Central Mixed-Use PD Overlay	
90303120000	S MAIN ST	0.13	CMU-PD	Central Mixed-Use PD Overlay	
Central Mixed-Use PD Overlay Total:			0.45	Acres	
90608761300	WITZEL AVE	0.34	DR-6	Duplex Residential - 6	
91216040000	W LINWOOD AVE	0.14	DR-6	Duplex Residential - 6	
91218990000	VIOLA AVE	0.19	DR-6	Duplex Residential - 6	
91416760800	CHERRY PARK CT	0.54	DR-6	Duplex Residential - 6	
91416761000	CHERRY PARK CT	0.28	DR-6	Duplex Residential - 6	
91416761100	CHERRY PARK CT	0.26	DR-6	Duplex Residential - 6	
91416761200	CHERRY PARK CT	0.26	DR-6	Duplex Residential - 6	
91416761300	CHERRY PARK CT	0.31	DR-6	Duplex Residential - 6	
91532100000	JACKSON ST	2.89	DR-6	Duplex Residential - 6	
91532300100	KOPE AVE	0.19	DR-6	Duplex Residential - 6	
91532420000	JACKSON ST	1.52	DR-6	Duplex Residential - 6	
91621540500	N WESTHAVEN DR	0.30	DR-6	Duplex Residential - 6	
Duplex Residential - 6 Total:			7.22	Acres	
91102990102	GROVE ST	0.30	DR-6-PD	Duplex Residential - 6 PD Overlay	
91102990103	GROVE ST	0.28	DR-6-PD	Duplex Residential - 6 PD Overlay	
91102990104	GROVE ST	0.28	DR-6-PD	Duplex Residential - 6 PD Overlay	
91102990105	GROVE ST	0.28	DR-6-PD	Duplex Residential - 6 PD Overlay	
91279140000		4.48	DR-6-PD	Duplex Residential - 6 PD Overlay	
Duplex Residential - 6 PD Overlay Total:			5.62	Acres	
90302720000	E 11TH AVE	0.17	HI		Heavy Industrial
90302740000	E 11TH AVE	0.17	HI		Heavy Industrial
91219890000	VINLAND ST	7.74	HI		Heavy Industrial
91219930000	VINLAND ST	7.73	HI		Heavy Industrial
91225000103	STILLMAN DR	6.26	HI		Heavy Industrial
91225200000	W FERNAU AVE	1.09	HI		Heavy Industrial
91225800203	FERNAU CT	2.58	HI		Heavy Industrial
91225800801	PROGRESS DR	2.73	HI		Heavy Industrial
91328560200	W 20TH AVE	1.00	HI		Heavy Industrial
91329000000	UNIVERSAL ST	7.10	HI		Heavy Industrial
91329103007	S OAKWOOD RD	1.57	HI		Heavy Industrial
91329120300	STATE ROAD 44	7.20	HI		Heavy Industrial
91329200000	STATE ROAD 91	4.36	HI		Heavy Industrial
91329200300	ATLAS AVE	9.61	HI		Heavy Industrial
91329200500	STATE ROAD 91	2.50	HI		Heavy Industrial
91329220000	ATLAS AVE	6.98	HI		Heavy Industrial
91329230100	GLOBAL PKWY	2.78	HI		Heavy Industrial
91329230200	ATLAS AVE	11.00	HI		Heavy Industrial
91329240000	GLOBAL PKWY	3.66	HI		Heavy Industrial
91329250000	STATE ROAD 91	24.09	HI		Heavy Industrial

Tax ID	Street Location	Acres	Zoning		
			Zoning Code	Residential	Non-Residential
91334050000	W 20TH AVE	0.92	HI		Heavy Industrial
91364000200	S OAKWOOD RD	23.21	HI		Heavy Industrial
91411210100	W RIPPLE AVE	21.83	HI		Heavy Industrial
91411220100	W RIPPLE AVE	47.05	HI		Heavy Industrial
91412600100	W 28TH AVE	2.60	HI		Heavy Industrial
91413210200	BRADLEY ST	7.83	HI		Heavy Industrial
91413210300	BRADLEY ST	0.28	HI		Heavy Industrial
91413220000	BRADLEY ST	9.86	HI		Heavy Industrial
91413420100	OREGON ST	0.92	HI		Heavy Industrial
91413620105	MEDALIST DR	1.89	HI		Heavy Industrial
91413670000	W 35TH AVE	3.86	HI		Heavy Industrial
91413670500	W 35TH AVE	6.19	HI		Heavy Industrial
91413670800	W 35TH AVE	2.69	HI		Heavy Industrial
91413680200	MARVEL DR	6.25	HI		Heavy Industrial
91413680300	MARVEL DR	0.52	HI		Heavy Industrial
91421100000	OREGON ST	35.87	HI		Heavy Industrial
91421110000	OREGON ST	25.74	HI		Heavy Industrial
91501211000	MOSER ST	15.47	HI		Heavy Industrial
91519600300	N MAIN ST	10.12	HI		Heavy Industrial
91519600501	JACKSON ST	0.88	HI		Heavy Industrial
Heavy Industrial Total:		334.3	Acres		
91334120300	COMPASS WAY	52.76	HI-PD		Heavy Industrial PD Overlay
91334130101	COMPASS WAY	20.54	HI-PD		Heavy Industrial PD Overlay
91334130103	COMPASS WAY	9.34	HI-PD		Heavy Industrial PD Overlay
91334150100	COMPASS WAY	5.88	HI-PD		Heavy Industrial PD Overlay
91334150200	COMPASS WAY	0.73	HI-PD		Heavy Industrial PD Overlay
91334500000	CLAIRVILLE RD	38.18	HI-PD		Heavy Industrial PD Overlay
91334510000	CLAIRVILLE RD	39.40	HI-PD		Heavy Industrial PD Overlay
Heavy Industrial PD Overlay Total:		166.83	Acres		
90400470000	NORTHWESTERN AVE	0.11	I		Institutional
91008540000	E NEW YORK AVE	0.17	I		Institutional
91201470000	ALGOMA BLVD	1.21	I		Institutional
91249010000	SUNNYVIEW RD	58.29	I		Institutional
91300740000	W SOUTH PARK AVE	0.17	I		Institutional
91323340000	POBEREZNY RD	1.85	I		Institutional
91554000000	COUNTY ROAD A	1.17	I		Institutional
91554010000	COUNTY ROAD A	42.47	I		Institutional
91554010100	SHERMAN RD	4.39	I		Institutional
91554070000	SHERMAN RD	0.77	I		Institutional
91554080000	COUNTY ROAD A	13.28	I		Institutional
91608710600	N CAMPBELL RD	5.24	I		Institutional
Institutional Total:		129.12	Acres		
90401880000	E PARKWAY AVE	0.10	I-PD		Institutional PD Overlay
90600060101	W 4TH AVE	1.99	I-PD		Institutional PD Overlay
90613630000	S WESTHAVEN DR	0.72	I-PD		Institutional PD Overlay
91324250100	POBEREZNY RD	14.74	I-PD		Institutional PD Overlay
91324250300	POBEREZNY RD	1.93	I-PD		Institutional PD Overlay
91324260100	33 WAUPUN RD	36.85	I-PD		Institutional PD Overlay
91324260200	WAUPUN RD	2.18	I-PD		Institutional PD Overlay
91514910100	VIOLA AVE	1.07	I-PD		Institutional PD Overlay
Institutional PD Overlay Total:		59.58	Acres		
91278250000	FOUNTAIN AVE	2.86	MH-9-PD	Mobile Home Residential - 9 PD Overlay	
Mobile Home Residential - 9 PD Overlay Total:		2.86	Acres		
90609570000	JOSSLYN ST	2.52	MR-12	Multi-Family Residential - 12	
90609570100	JOSSLYN ST	6.63	MR-12	Multi-Family Residential - 12	
90611930000	WITZEL AVE	0.27	MR-12	Multi-Family Residential - 12	
91250190000	EICHSTADT RD	6.67	MR-12	Multi-Family Residential - 12	
91250200000	EICHSTADT RD	0.84	MR-12	Multi-Family Residential - 12	
91307230100	W SOUTH PARK AVE	0.20	MR-12	Multi-Family Residential - 12	
91307230200	W SOUTH PARK AVE	0.33	MR-12	Multi-Family Residential - 12	
91307360201	00 OSBORN AVE	9.93	MR-12	Multi-Family Residential - 12	
91311971300	S OAKWOOD RD	0.69	MR-12	Multi-Family Residential - 12	
91329343000	W 20TH AVE	17.33	MR-12	Multi-Family Residential - 12	
91329600202	RUFFED GROUSE WAY	20.19	MR-12	Multi-Family Residential - 12	
91329600401	RUFFED GROUSE WAY	8.99	MR-12	Multi-Family Residential - 12	
91334000000	W 20TH AVE	16.25	MR-12	Multi-Family Residential - 12	
91334010100	W 20TH AVE	2.42	MR-12	Multi-Family Residential - 12	
91416400200	FOND DU LAC RD	1.90	MR-12	Multi-Family Residential - 12	
91523540000	BOWEN ST	0.20	MR-12	Multi-Family Residential - 12	
91600780100	GRAHAM AVE	0.19	MR-12	Multi-Family Residential - 12	
91601330600	REPP AVE	0.27	MR-12	Multi-Family Residential - 12	
91601330900	PUNHOQUA ST	0.23	MR-12	Multi-Family Residential - 12	
Multi-Family Residential - 12 Total:		96.05	Acres		
91265000100	JACKSON ST	43.01	MR-12-PD	Multi-Family Residential - 12 PD Overlay	

Tax ID	Street Location	Acres	Zoning		
			Zoning Code	Residential	Non-Residential
91265100100	JACKSON ST	9.56	MR-12-PD	Multi-Family Residential - 12 PD Overlay	
91278200000	GLENVIEW LN	9.21	MR-12-PD	Multi-Family Residential - 12 PD Overlay	
91278220000	GLENVIEW LN	2.94	MR-12-PD	Multi-Family Residential - 12 PD Overlay	
91278230000	GLENVIEW LN	39.90	MR-12-PD	Multi-Family Residential - 12 PD Overlay	
91278240000	GLENVIEW LN	2.39	MR-12-PD	Multi-Family Residential - 12 PD Overlay	
91279120000		17.79	MR-12-PD	Multi-Family Residential - 12 PD Overlay	
91279130000		6.37	MR-12-PD	Multi-Family Residential - 12 PD Overlay	
91279140000		5.42	MR-12-PD	Multi-Family Residential - 12 PD Overlay	
91279140000		19.61	MR-12-PD	Multi-Family Residential - 12 PD Overlay	
91279150000		0.22	MR-12-PD	Multi-Family Residential - 12 PD Overlay	
91334010000	W 20TH AVE	16.41	MR-12-PD	Multi-Family Residential - 12 PD Overlay	
91411230300	OREGON ST	16.42	MR-12-PD	Multi-Family Residential - 12 PD Overlay	
91416580400	ISAAC LN	0.38	MR-12-PD	Multi-Family Residential - 12 PD Overlay	
91416580500	ISAAC LN	0.37	MR-12-PD	Multi-Family Residential - 12 PD Overlay	
91416580600	ISAAC LN	0.37	MR-12-PD	Multi-Family Residential - 12 PD Overlay	
91416580700	ISAAC LN	0.37	MR-12-PD	Multi-Family Residential - 12 PD Overlay	
91416583500	ISAAC LN	0.37	MR-12-PD	Multi-Family Residential - 12 PD Overlay	
91621650000	PATRIOT LN	3.05	MR-12-PD	Multi-Family Residential - 12 PD Overlay	
Multi-Family Residential - 12 PD Overlay Total:		194.16	Acres		
91221540000	WISCONSIN ST	0.23	MR-20	Multi-Family Residential - 20	
91221550000	WISCONSIN ST	0.23	MR-20	Multi-Family Residential - 20	
91413201502	W WAUKAU AVE	1.31	MR-20	Multi-Family Residential - 20	
Multi-Family Residential - 20 Total:		1.77	Acres		
91250180100	LOGAN DR	4.80	MR-20-PD	Multi-Family Residential - 20 PD Overlay	
91250185000	LOGAN DR	2.35	MR-20-PD	Multi-Family Residential - 20 PD Overlay	
Multi-Family Residential - 20 PD Overlay Total:		7.15	Acres		
90701740000	CHURCH AVE	0.36	MR-36	Multi-Family Residential - 36	
Multi-Family Residential - 36 Total:		0.36	Acres		
91104470100	E IRVING AVE	0.22	MR-36-PD	Multi-Family Residential - 36 PD Overlay	
Multi-Family Residential - 36 PD Overlay Total:		0.22	Acres		
90103260000	DAWES ST	0.11	MR-36-UTO	Multi-Family Residential - 36 UTO Overlay	
90103270000	CAMPUS PL	0.08	MR-36-UTO	Multi-Family Residential - 36 UTO Overlay	
Multi-Family Residential - 36 UTO Overlay Total:		0.19	Acres		
91209650000	W MURDOCK AVE	0.13	NMU	Neighborhood Mixed Use	
91515140000	N MAIN ST	0.27	NMU	Neighborhood Mixed Use	
91515360000	JEFFERSON ST	0.17	NMU	Neighborhood Mixed Use	
Neighborhood Mixed Use Total:		0.57	Acres		
90614210000	WITZEL AVE	1.99	NMU-PD	Neighborhood Mixed Use PD Overlay	
91276100000	LAKE BUTTE DES MORTS DR	1.03	NMU-PD	Neighborhood Mixed Use PD Overlay	
91276150000	LAKE BUTTE DES MORTS DR	37.52	NMU-PD	Neighborhood Mixed Use PD Overlay	
91276250000	LAKE BUTTE DES MORTS DR	7.65	NMU-PD	Neighborhood Mixed Use PD Overlay	
91276300000	LAKE BUTTE DES MORTS DR	1.62	NMU-PD	Neighborhood Mixed Use PD Overlay	
91307110201	W 20TH AVE	1.52	NMU-PD	Neighborhood Mixed Use PD Overlay	
Neighborhood Mixed Use PD Overlay Total:		51.33	Acres		
91334020000	W 20TH AVE	35.20	RH		Rural Holding
91334040000	W 20TH AVE	4.96	RH		Rural Holding
Rural Holding Total:		40.16	Acres		
90301330400	PIONEER DR	1.76	RMU	Riverfront Mixed Use	
90301330600	PIONEER DR	0.07	RMU	Riverfront Mixed Use	
90301550100	E 8TH AVE	2.60	RMU	Riverfront Mixed Use	
91607840101	ADAMS AVE	0.07	RMU	Riverfront Mixed Use	
91607840102	ADAMS AVE	0.07	RMU	Riverfront Mixed Use	
91607840200	ADAMS AVE	0.28	RMU	Riverfront Mixed Use	
91607840201	ADAMS AVE	0.39	RMU	Riverfront Mixed Use	
91608680200	BAUMAN ST	0.59	RMU	Riverfront Mixed Use	
91608710314	N CAMPBELL RD	2.31	RMU	Riverfront Mixed Use	
Riverfront Mixed Use Total:		8.14	Acres		
90600020402	OHIO ST	0.85	RMU-PD	Riverfront Mixed Use PD Overlay	
90905200000	W 5TH AVE	0.12	RMU-PD	Riverfront Mixed Use PD Overlay	
91608070400	ADAMS AVE	0.75	RMU-PD	Riverfront Mixed Use PD Overlay	
Riverfront Mixed Use PD Overlay Total:		1.72	Acres		
90300010100	OREGON ST	3.31	RMU-PD-RFO	Riverfront Mixed Use PD, RFO Overlays	
90900010000	I OREGON ST	21.39	RMU-PD-RFO	Riverfront Mixed Use PD, RFO Overlays	
90907840101	MICHIGAN ST	1.84	RMU-PD-RFO	Riverfront Mixed Use PD, RFO Overlays	
Riverfront Mixed Use PD, RFO Overlays Total:		26.54	Acres		
90301330500	E 7TH AVE	2.58	RMU-RFO	Riverfront Mixed Use RFO Overlay	
90301390100	E 7TH AVE	1.48	RMU-RFO	Riverfront Mixed Use RFO Overlay	
Riverfront Mixed Use RFO Overlay Total:		4.06	Acres		
90614050100	WITZEL AVE	0.32	SMU		Suburban Mixed Use
90614080000	WITZEL AVE	0.53	SMU		Suburban Mixed Use
91200010800	ALGOMA BLVD	2.40	SMU		Suburban Mixed Use
91219290100	JACKSON ST	0.58	SMU		Suburban Mixed Use
91219810000	JACKSON ST	2.28	SMU		Suburban Mixed Use

Tax ID	Street Location	Acres	Zoning		
			Zoning Code	Residential	Non-Residential
91250130000	JACKSON ST	1.47	SMU		Suburban Mixed Use
91250130100	JACKSON ST	1.35	SMU		Suburban Mixed Use
91250182500	LOGAN DR	1.74	SMU		Suburban Mixed Use
91307320000	W SOUTH PARK AVE	2.10	SMU		Suburban Mixed Use
91316380101	S WASHBURN ST	1.50	SMU		Suburban Mixed Use
91316380201	W 20TH AVE	1.50	SMU		Suburban Mixed Use
91323330000	POBEREZNY RD	14.65	SMU		Suburban Mixed Use
91323350000	POBEREZNY RD	30.83	SMU		Suburban Mixed Use
91329430500	S WASHBURN ST	3.67	SMU		Suburban Mixed Use
91329431100	STATE HIGHWAY 44	1.26	SMU		Suburban Mixed Use
91334212008	RIPON LN	0.47	SMU		Suburban Mixed Use
91368000000	S WASHBURN ST	30.53	SMU		Suburban Mixed Use
91369070100	STATE ROAD 26	42.79	SMU		Suburban Mixed Use
91514830000	W LINWOOD AVE	0.18	SMU		Suburban Mixed Use
91518290000	BACON AVE	0.13	SMU		Suburban Mixed Use
91519591001	W PACKER AVE	2.87	SMU		Suburban Mixed Use
91621020000	N WASHBURN ST	5.19	SMU		Suburban Mixed Use
91621120000	N WASHBURN ST	3.47	SMU		Suburban Mixed Use
91621580100	OMRO RD	0.27	SMU		Suburban Mixed Use
Suburban Mixed Use Total:		152.08	Acres		
91260010000	JACKSON ST	2.30	SMU-PD		Suburban Mixed Use PD Overlay
91279140000		2.94	SMU-PD		Suburban Mixed Use PD Overlay
91279140000		1.13	SMU-PD		Suburban Mixed Use PD Overlay
91309141000	S WASHBURN ST	4.47	SMU-PD		Suburban Mixed Use PD Overlay
91310331000	WAUPUN RD	8.55	SMU-PD		Suburban Mixed Use PD Overlay
91310332000	POBEREZNY RD	4.69	SMU-PD		Suburban Mixed Use PD Overlay
91310333002	POBEREZNY RD	0.17	SMU-PD		Suburban Mixed Use PD Overlay
91325540100	S WASHBURN ST	1.90	SMU-PD		Suburban Mixed Use PD Overlay
91365060100	W WAUKAU AVE	2.42	SMU-PD		Suburban Mixed Use PD Overlay
91365500200	S WASHBURN ST	25.75	SMU-PD		Suburban Mixed Use PD Overlay
91366350000	S WASHBURN ST	21.96	SMU-PD		Suburban Mixed Use PD Overlay
91366500000	S WASHBURN ST	37.47	SMU-PD		Suburban Mixed Use PD Overlay
91367000000	S WASHBURN ST	30.30	SMU-PD		Suburban Mixed Use PD Overlay
91367490000	RIPPLE AVE	1.78	SMU-PD		Suburban Mixed Use PD Overlay
91367500000	51 S WASHBURN ST	33.69	SMU-PD		Suburban Mixed Use PD Overlay
91368490000	S WASHBURN ST	5.10	SMU-PD		Suburban Mixed Use PD Overlay
91368500200	W FISK AVE	14.78	SMU-PD		Suburban Mixed Use PD Overlay
91369050000	PLANEVIEW DR	11.67	SMU-PD		Suburban Mixed Use PD Overlay
91514970600	N MAIN ST	0.49	SMU-PD		Suburban Mixed Use PD Overlay
91514970700	W MURDOCK AVE	1.06	SMU-PD		Suburban Mixed Use PD Overlay
91527190100	JACKSON ST	3.08	SMU-PD		Suburban Mixed Use PD Overlay
91608700201	N KOELLER ST	1.70	SMU-PD		Suburban Mixed Use PD Overlay
Suburban Mixed Use PD Overlay Total:		217.4	Acres		
90660000000	WILDERNESS PL	10.04	SR-2	Single Family Residential - 2	
90660010000	WILDERNESS PL	0.55	SR-2	Single Family Residential - 2	
90660020000	WILDERNESS PL	0.55	SR-2	Single Family Residential - 2	
90660030000	WILDERNESS PL	0.88	SR-2	Single Family Residential - 2	
90660040000	WILDERNESS PL	0.56	SR-2	Single Family Residential - 2	
90660050000	WILDERNESS PL	0.74	SR-2	Single Family Residential - 2	
90660080000	WILDERNESS PL	0.55	SR-2	Single Family Residential - 2	
90660090000	QUAIL RUN DR	0.50	SR-2	Single Family Residential - 2	
90660120000	QUAIL RUN DR	0.72	SR-2	Single Family Residential - 2	
90660170000	QUAIL RUN DR	0.27	SR-2	Single Family Residential - 2	
90660180000	QUAIL RUN DR	0.61	SR-2	Single Family Residential - 2	
90660200000	QUAIL RUN DR	1.08	SR-2	Single Family Residential - 2	
90660230000	QUAIL RUN DR	0.63	SR-2	Single Family Residential - 2	
90660240000	QUAIL RUN DR	0.55	SR-2	Single Family Residential - 2	
90660250000	QUAIL RUN DR	0.65	SR-2	Single Family Residential - 2	
90660260000	QUAIL RUN DR	0.72	SR-2	Single Family Residential - 2	
90660270000	QUAIL RUN DR	0.67	SR-2	Single Family Residential - 2	
90660280000	QUAIL RUN DR	0.59	SR-2	Single Family Residential - 2	
90660290000	QUAIL RUN DR	0.78	SR-2	Single Family Residential - 2	
90660330000	QUAIL RUN DR	0.69	SR-2	Single Family Residential - 2	
90660340000	QUAIL RUN DR	0.53	SR-2	Single Family Residential - 2	
90660350000	QUAIL RUN DR	0.49	SR-2	Single Family Residential - 2	
91334334001	W WAUKAU AVE	0.90	SR-2	Single Family Residential - 2	
91334334004	W WAUKAU AVE	0.89	SR-2	Single Family Residential - 2	
91334343001	W WAUKAU AVE	0.95	SR-2	Single Family Residential - 2	
91334344005	W WAUKAU AVE	5.75	SR-2	Single Family Residential - 2	
Single Family Residential - 2 Total:		31.84	Acres		
91518671000	HICKORY LN	5.74	SR-2-LRO	Single Family Residential - 2 LRO Overlay	
Single Family Residential - 2 LRO Overlay Total:		5.74	Acres		
91222570000	PARK RIDGE AVE	0.29	SR-3	Single Family Residential - 3	
91224220000	RIVER MILL RD	0.34	SR-3	Single Family Residential - 3	

Tax ID	Street Location	Acres	Zoning		
			Zoning Code	Residential	Non-Residential
91226850000	VINLAND ST	0.71	SR-3	Single Family Residential - 3	
91227260000	KAITLYNN CT	0.33	SR-3	Single Family Residential - 3	
91310750000	W 9TH AVE	0.22	SR-3	Single Family Residential - 3	
91323360100	BURNWOOD DR	0.38	SR-3	Single Family Residential - 3	
91334311010	BURNWOOD DR	0.55	SR-3	Single Family Residential - 3	
91340740000	RUSCHFIELD DR	0.23	SR-3	Single Family Residential - 3	
91346021400	MORNINGSTAR LN	0.52	SR-3	Single Family Residential - 3	
91352110100	S OAKWOOD RD	0.84	SR-3	Single Family Residential - 3	
91512790000	MENOMINEE DR	0.25	SR-3	Single Family Residential - 3	
91519600207	LIBBEY AVE	3.14	SR-3	Single Family Residential - 3	
91519810000	ANCHORAGE CT	0.26	SR-3	Single Family Residential - 3	
91522290000	WHITE SWAN DR	0.25	SR-3	Single Family Residential - 3	
91522340000	WHITE SWAN DR	0.26	SR-3	Single Family Residential - 3	
91524700000	CLIFFVIEW DR	0.27	SR-3	Single Family Residential - 3	
91525090000	BAVARIAN CT	0.26	SR-3	Single Family Residential - 3	
91525100000	BAVARIAN CT	0.27	SR-3	Single Family Residential - 3	
91525960000	CLIFFVIEW CT	0.29	SR-3	Single Family Residential - 3	
91526190200	HICKORY CT	0.32	SR-3	Single Family Residential - 3	
91560100101		15.07	SR-3	Single Family Residential - 3	
91560100700	MARWAY CT	0.29	SR-3	Single Family Residential - 3	
91560100800	MARWAY CT	0.31	SR-3	Single Family Residential - 3	
91560100900	MARWAY CT	0.40	SR-3	Single Family Residential - 3	
91560101000	SHAMBEAU DR	0.27	SR-3	Single Family Residential - 3	
91560101100	SHAMBEAU DR	0.26	SR-3	Single Family Residential - 3	
91560101200	SHAMBEAU DR	0.26	SR-3	Single Family Residential - 3	
91560101300	SHAMBEAU DR	0.34	SR-3	Single Family Residential - 3	
91560101700	CEDAR VIEW DR	0.42	SR-3	Single Family Residential - 3	
91560103200	ISLAND VIEW DR	0.43	SR-3	Single Family Residential - 3	
91560103300	ISLAND VIEW DR	0.50	SR-3	Single Family Residential - 3	
91560103400	ISLAND VIEW DR	0.56	SR-3	Single Family Residential - 3	
91560103500	ISLAND VIEW DR	0.64	SR-3	Single Family Residential - 3	
91560103600	ISLAND VIEW DR	1.02	SR-3	Single Family Residential - 3	
91560103700	ISLAND VIEW DR	1.39	SR-3	Single Family Residential - 3	
91560103800	ZACHER DR	0.34	SR-3	Single Family Residential - 3	
91560104300	HILLWOOD RUN DR	0.33	SR-3	Single Family Residential - 3	
91560104400	ZACHER DR	0.31	SR-3	Single Family Residential - 3	
Single Family Residential - 3 Total:		33.12	Acres		
91518677900	HICKORY LN	0.33	SR-3-LRO	Single Family Residential - 3 LRO Overlay	
91526192300	HICKORY LN	0.51	SR-3-LRO	Single Family Residential - 3 LRO Overlay	
91526192400	HICKORY LN	0.26	SR-3-LRO	Single Family Residential - 3 LRO Overlay	
Single Family Residential - 3 LRO Overlay Total:		1.1	Acres		
91200303000	ALGOMA BLVD	1.38	SR-3-PD	Single Family Residential - 3 PD Overlay	
91280150000	RYF RD	4.06	SR-3-PD	Single Family Residential - 3 PD Overlay	
91280150200	EDGEWOOD RD	0.51	SR-3-PD	Single Family Residential - 3 PD Overlay	
91280150201	EDGEWOOD RD	0.51	SR-3-PD	Single Family Residential - 3 PD Overlay	
91281590000	SHOREBIRD CT	0.40	SR-3-PD	Single Family Residential - 3 PD Overlay	
91281600000	SHOREBIRD CT	0.34	SR-3-PD	Single Family Residential - 3 PD Overlay	
91281620000	SHOREBIRD CT	0.25	SR-3-PD	Single Family Residential - 3 PD Overlay	
91281650000	SHOREBIRD CT	0.37	SR-3-PD	Single Family Residential - 3 PD Overlay	
Single Family Residential - 3 PD Overlay Total:		7.82	Acres		
90607910100	S SAWYER ST	0.18	SR-5	Single Family Residential - 5	
90608540000	W 9TH AVE	0.58	SR-5	Single Family Residential - 5	
90613240100	LILAC ST	0.19	SR-5	Single Family Residential - 5	
90617470000	GRACELAND DR	0.18	SR-5	Single Family Residential - 5	
90617600000	ABBAY AVE	0.18	SR-5	Single Family Residential - 5	
90617610000	ABBAY AVE	0.19	SR-5	Single Family Residential - 5	
90617800000	KATY CT	0.35	SR-5	Single Family Residential - 5	
90658000000	FOX FIRE DR	0.41	SR-5	Single Family Residential - 5	
90665020100	PAULS PL	0.28	SR-5	Single Family Residential - 5	
90665020105	9TH STREET RD	16.31	SR-5	Single Family Residential - 5	
90665020500	PAULS PL	0.28	SR-5	Single Family Residential - 5	
90665020800	PAULS PL	0.59	SR-5	Single Family Residential - 5	
90665021400	MARYS DR	0.29	SR-5	Single Family Residential - 5	
90665022100	MARYS DR	0.42	SR-5	Single Family Residential - 5	
90665022300	PAULS PL	0.28	SR-5	Single Family Residential - 5	
90665022400	PAULS PL	0.31	SR-5	Single Family Residential - 5	
91006750000	CENTRAL ST	0.08	SR-5	Single Family Residential - 5	
91200180100	ALGOMA BLVD	0.34	SR-5	Single Family Residential - 5	
91218230000	VINLAND ST	0.23	SR-5	Single Family Residential - 5	
91218470000	WALNUT ST	0.30	SR-5	Single Family Residential - 5	
91219960100	VINLAND ST	0.93	SR-5	Single Family Residential - 5	
91225500000	VINLAND ST	0.51	SR-5	Single Family Residential - 5	
91229650000	MINERVA ST	0.21	SR-5	Single Family Residential - 5	
91250100000	FARMINGTON ST	5.55	SR-5	Single Family Residential - 5	

Tax ID	Street Location	Acres	Zoning		
			Zoning Code	Residential	Non-Residential
91250179300	CHRISTIAN DR	0.27	SR-5	Single Family Residential - 5	
91279100000	STEARNS DR	2.61	SR-5	Single Family Residential - 5	
91279110000	STEARNS DR	2.68	SR-5	Single Family Residential - 5	
91279120000		1.85	SR-5	Single Family Residential - 5	
91279130000		23.75	SR-5	Single Family Residential - 5	
91279140000		13.08	SR-5	Single Family Residential - 5	
91279150000		40.46	SR-5	Single Family Residential - 5	
91279160000	STEARNS DR	31.11	SR-5	Single Family Residential - 5	
91279170000	STEARNS DR	4.30	SR-5	Single Family Residential - 5	
91279500000	LAKE BUTTE DES MORTS DR	26.16	SR-5	Single Family Residential - 5	
91279600000	LAKE BUTTE DES MORTS DR	1.89	SR-5	Single Family Residential - 5	
91279700000	LAKE BUTTE DES MORTS DR	19.01	SR-5	Single Family Residential - 5	
91279900000	LAKE BUTTE DES MORTS DR	21.89	SR-5	Single Family Residential - 5	
91280010000	RYF RD	38.33	SR-5	Single Family Residential - 5	
91304840000	W SOUTH PARK AVE	0.18	SR-5	Single Family Residential - 5	
91307140100	W SOUTH PARK AVE	0.32	SR-5	Single Family Residential - 5	
91307140200	W SOUTH PARK AVE	0.34	SR-5	Single Family Residential - 5	
91307140300	W SOUTH PARK AVE	4.69	SR-5	Single Family Residential - 5	
91308350000	W 12TH AVE	0.21	SR-5	Single Family Residential - 5	
91309980000	WINDSOR ST	0.16	SR-5	Single Family Residential - 5	
91310500000	W 18TH AVE	0.25	SR-5	Single Family Residential - 5	
91312810000	MARICOPA DR	0.65	SR-5	Single Family Residential - 5	
91319070000	W 20TH AVE	0.35	SR-5	Single Family Residential - 5	
91319490000	MARICOPA DR	0.39	SR-5	Single Family Residential - 5	
91319860000	MARICOPA DR	0.32	SR-5	Single Family Residential - 5	
91320440000	VILLA PARK DR	0.25	SR-5	Single Family Residential - 5	
91329260000	CLAIRVILLE RD	30.15	SR-5	Single Family Residential - 5	
91334434004	W WAUKAU AVE	1.48	SR-5	Single Family Residential - 5	
91334443002	W WAUKAU AVE	0.26	SR-5	Single Family Residential - 5	
91334443005	W WAUKAU AVE	0.16	SR-5	Single Family Residential - 5	
91336005800	CASEY TRL	0.36	SR-5	Single Family Residential - 5	
91336006101	CASEY TRL	0.30	SR-5	Single Family Residential - 5	
91336007300	CLOE JUDE DR	0.19	SR-5	Single Family Residential - 5	
91336130000	CASEY TRL	0.69	SR-5	Single Family Residential - 5	
91336400500	CASEY TRL	0.30	SR-5	Single Family Residential - 5	
91336400700	CASEY TRL	0.21	SR-5	Single Family Residential - 5	
91336400800	CASEY TRL	0.21	SR-5	Single Family Residential - 5	
91336400900	CASEY TRL	0.20	SR-5	Single Family Residential - 5	
91336401000	CASEY TRL	0.18	SR-5	Single Family Residential - 5	
91336401100	CASEY TRL	0.20	SR-5	Single Family Residential - 5	
91336401600	WYATT WAY	0.20	SR-5	Single Family Residential - 5	
91336401700	WYATT WAY	0.17	SR-5	Single Family Residential - 5	
91336401900	WYATT WAY	0.23	SR-5	Single Family Residential - 5	
91336402000	WYATT WAY	0.27	SR-5	Single Family Residential - 5	
91336402100	SAGE CROSSING	0.23	SR-5	Single Family Residential - 5	
91336402300	SAGE CROSSING	0.21	SR-5	Single Family Residential - 5	
91336402400	SAGE CROSSING	0.18	SR-5	Single Family Residential - 5	
91336402500	SAGE CROSSING	0.17	SR-5	Single Family Residential - 5	
91336402600	SAGE CROSSING	0.17	SR-5	Single Family Residential - 5	
91336402700	SAGE CROSSING	0.17	SR-5	Single Family Residential - 5	
91336402900	MOCKINGBIRD WAY	0.17	SR-5	Single Family Residential - 5	
91336403100	MOCKINGBIRD WAY	0.24	SR-5	Single Family Residential - 5	
91336403300	SAGE CROSSING	0.17	SR-5	Single Family Residential - 5	
91336403400	SAGE CROSSING	0.22	SR-5	Single Family Residential - 5	
91336403500	SAGE CROSSING	0.20	SR-5	Single Family Residential - 5	
91336403600	SAGE CROSSING	0.19	SR-5	Single Family Residential - 5	
91336403700	SAGE CROSSING	0.22	SR-5	Single Family Residential - 5	
91337000100	MOCKINGBIRD WAY	2.06	SR-5	Single Family Residential - 5	
91342500101	PHEASANT CREEK DR	2.96	SR-5	Single Family Residential - 5	
91410010200	W 17TH AVE	0.32	SR-5	Single Family Residential - 5	
91412250000	KNAPP ST	0.19	SR-5	Single Family Residential - 5	
91413200400	W WAUKAU AVE	2.25	SR-5	Single Family Residential - 5	
91413341302	FOND DU LAC RD	1.43	SR-5	Single Family Residential - 5	
91413343900	GIBSON CT	0.20	SR-5	Single Family Residential - 5	
91413344000	GIBSON CT	0.34	SR-5	Single Family Residential - 5	
91413344200	GIBSON CT	0.22	SR-5	Single Family Residential - 5	
91413344300	GIBSON CT	0.17	SR-5	Single Family Residential - 5	
91413344700	GIBSON CT	0.17	SR-5	Single Family Residential - 5	
91413344800	GIBSON CT	0.27	SR-5	Single Family Residential - 5	
91413345000	GIBSON CT	0.17	SR-5	Single Family Residential - 5	
91413345300	GIBSON CT	0.19	SR-5	Single Family Residential - 5	
91413660401	OREGON ST	1.42	SR-5	Single Family Residential - 5	
91413750300	W WAUKAU AVE	0.34	SR-5	Single Family Residential - 5	
91413980000	OREGON ST	2.32	SR-5	Single Family Residential - 5	

Tax ID	Street Location	Acres	Zoning		
			Zoning Code	Residential	Non-Residential
91415500000	FOND DU LAC RD	2.50	SR-5	Single Family Residential - 5	
91416582100	JACOB AVE	0.23	SR-5	Single Family Residential - 5	
91416584200	ISAAC LN	0.19	SR-5	Single Family Residential - 5	
91416584300	ISAAC LN	0.19	SR-5	Single Family Residential - 5	
91507240000	BROAD ST	0.12	SR-5	Single Family Residential - 5	
91507250000	BROAD ST	0.12	SR-5	Single Family Residential - 5	
91508060000	E NEW YORK AVE	0.14	SR-5	Single Family Residential - 5	
91508110000	MONROE ST	0.14	SR-5	Single Family Residential - 5	
91508130000	MONROE ST	0.17	SR-5	Single Family Residential - 5	
91508890000	GROVE ST	0.15	SR-5	Single Family Residential - 5	
91509200000	OAK ST	0.15	SR-5	Single Family Residential - 5	
91510530000	E MURDOCK AVE	0.21	SR-5	Single Family Residential - 5	
91510540000	E MURDOCK AVE	0.21	SR-5	Single Family Residential - 5	
91519620101	BIRCH LN	0.17	SR-5	Single Family Residential - 5	
91519620102	BIRCH LN	0.19	SR-5	Single Family Residential - 5	
91519620117	MACARTHUR RD	0.21	SR-5	Single Family Residential - 5	
91519620118	BIRCH LN	0.17	SR-5	Single Family Residential - 5	
91519623600	COUNTY ROAD A	0.22	SR-5	Single Family Residential - 5	
91519629700	BIRCH LN	0.24	SR-5	Single Family Residential - 5	
91530500000	JACKSON ST	9.79	SR-5	Single Family Residential - 5	
91531700000	JACKSON ST	9.95	SR-5	Single Family Residential - 5	
91550230000	DRIFTWOOD LN	0.27	SR-5	Single Family Residential - 5	
91550240000	DRIFTWOOD LN	0.28	SR-5	Single Family Residential - 5	
91550250000	DRIFTWOOD LN	0.28	SR-5	Single Family Residential - 5	
91554010200	SHERMAN RD	0.07	SR-5	Single Family Residential - 5	
91560110000	ISLAND VIEW DR	0.67	SR-5	Single Family Residential - 5	
91560200100	SHERMAN RD	0.57	SR-5	Single Family Residential - 5	
91560200200	E SUNNYVIEW RD	0.51	SR-5	Single Family Residential - 5	
91560200300	E SUNNYVIEW RD	0.50	SR-5	Single Family Residential - 5	
91560200401	SUNNYVIEW RD	0.50	SR-5	Single Family Residential - 5	
91560200402	SUNNYVIEW RD	0.50	SR-5	Single Family Residential - 5	
91560200403	SUNNYVIEW RD	0.51	SR-5	Single Family Residential - 5	
91560200404	SUNNYVIEW RD	5.72	SR-5	Single Family Residential - 5	
91561500301	ISLAND VIEW DR	0.10	SR-5	Single Family Residential - 5	
91603280000	HAWK ST	0.26	SR-5	Single Family Residential - 5	
Single Family Residential - 5 Total:		354.19	Acres		
91413340202	STONE BEACH RD	0.26	SR-5-LRO	Single Family Residential - 5 LRO Overlay	
91413344100	GIBSON CT	0.25	SR-5-LRO	Single Family Residential - 5 LRO Overlay	
91414610100	STONE BEACH RD	0.50	SR-5-LRO	Single Family Residential - 5 LRO Overlay	
91414610200	STONE BEACH RD	0.35	SR-5-LRO	Single Family Residential - 5 LRO Overlay	
91414700100	STONE BEACH RD	0.49	SR-5-LRO	Single Family Residential - 5 LRO Overlay	
91414700400	STONE BEACH RD	1.05	SR-5-LRO	Single Family Residential - 5 LRO Overlay	
91414980000	STONE BEACH ST	0.20	SR-5-LRO	Single Family Residential - 5 LRO Overlay	
91415000000	STONE BEACH ST	0.11	SR-5-LRO	Single Family Residential - 5 LRO Overlay	
91415280000	STONE BEACH ST	0.28	SR-5-LRO	Single Family Residential - 5 LRO Overlay	
91415350000	STONE BEACH LN	0.28	SR-5-LRO	Single Family Residential - 5 LRO Overlay	
91415360000	STONE BEACH LN	0.15	SR-5-LRO	Single Family Residential - 5 LRO Overlay	
91415380200	STONE BEACH LN	0.72	SR-5-LRO	Single Family Residential - 5 LRO Overlay	
91415540100	CRIMSON LN	0.91	SR-5-LRO	Single Family Residential - 5 LRO Overlay	
91415650000	LAKE REST LN	0.28	SR-5-LRO	Single Family Residential - 5 LRO Overlay	
91417110000	E WAIUKAU AVE	0.50	SR-5-LRO	Single Family Residential - 5 LRO Overlay	
91417450100	OLD ORCHARD LN	0.59	SR-5-LRO	Single Family Residential - 5 LRO Overlay	
91518611600	SHOREWOOD DR	0.30	SR-5-LRO	Single Family Residential - 5 LRO Overlay	
91518612400	SHOREWOOD DR	0.40	SR-5-LRO	Single Family Residential - 5 LRO Overlay	
91518670600	E MURDOCK AVE	0.11	SR-5-LRO	Single Family Residential - 5 LRO Overlay	
91518672600	HICKORY LN	0.68	SR-5-LRO	Single Family Residential - 5 LRO Overlay	
91518678300	HICKORY LN	0.09	SR-5-LRO	Single Family Residential - 5 LRO Overlay	
91518678400	HICKORY LN	0.18	SR-5-LRO	Single Family Residential - 5 LRO Overlay	
91519624600	SHADOW LN	0.18	SR-5-LRO	Single Family Residential - 5 LRO Overlay	
91519625400	SHADOW LN	0.18	SR-5-LRO	Single Family Residential - 5 LRO Overlay	
91519626800	SHADOW LN	0.21	SR-5-LRO	Single Family Residential - 5 LRO Overlay	
91519627900	COZY LN	0.19	SR-5-LRO	Single Family Residential - 5 LRO Overlay	
91519628200	COZY LN	0.29	SR-5-LRO	Single Family Residential - 5 LRO Overlay	
91550280000	DRIFTWOOD LN	0.65	SR-5-LRO	Single Family Residential - 5 LRO Overlay	
91561500700	ISLAND VIEW DR	0.25	SR-5-LRO	Single Family Residential - 5 LRO Overlay	
Single Family Residential - 5 LRO Overlay Total:		10.63	Acres		
91282000000	RYF RD	10.08	SR-5-PD	Single Family Residential - 5 PD Overlay	
91282000001	RYF RD	25.15	SR-5-PD	Single Family Residential - 5 PD Overlay	
91282000300	EDGEWOOD RD	0.30	SR-5-PD	Single Family Residential - 5 PD Overlay	
91282001100	HEMLOCK CT	0.18	SR-5-PD	Single Family Residential - 5 PD Overlay	
91282001500	HEMLOCK CT	0.17	SR-5-PD	Single Family Residential - 5 PD Overlay	
91282002200	EDGEWOOD RD	0.43	SR-5-PD	Single Family Residential - 5 PD Overlay	
91282150000	RYF RD	3.73	SR-5-PD	Single Family Residential - 5 PD Overlay	
91282450000	EDGEWOOD LN	2.34	SR-5-PD	Single Family Residential - 5 PD Overlay	

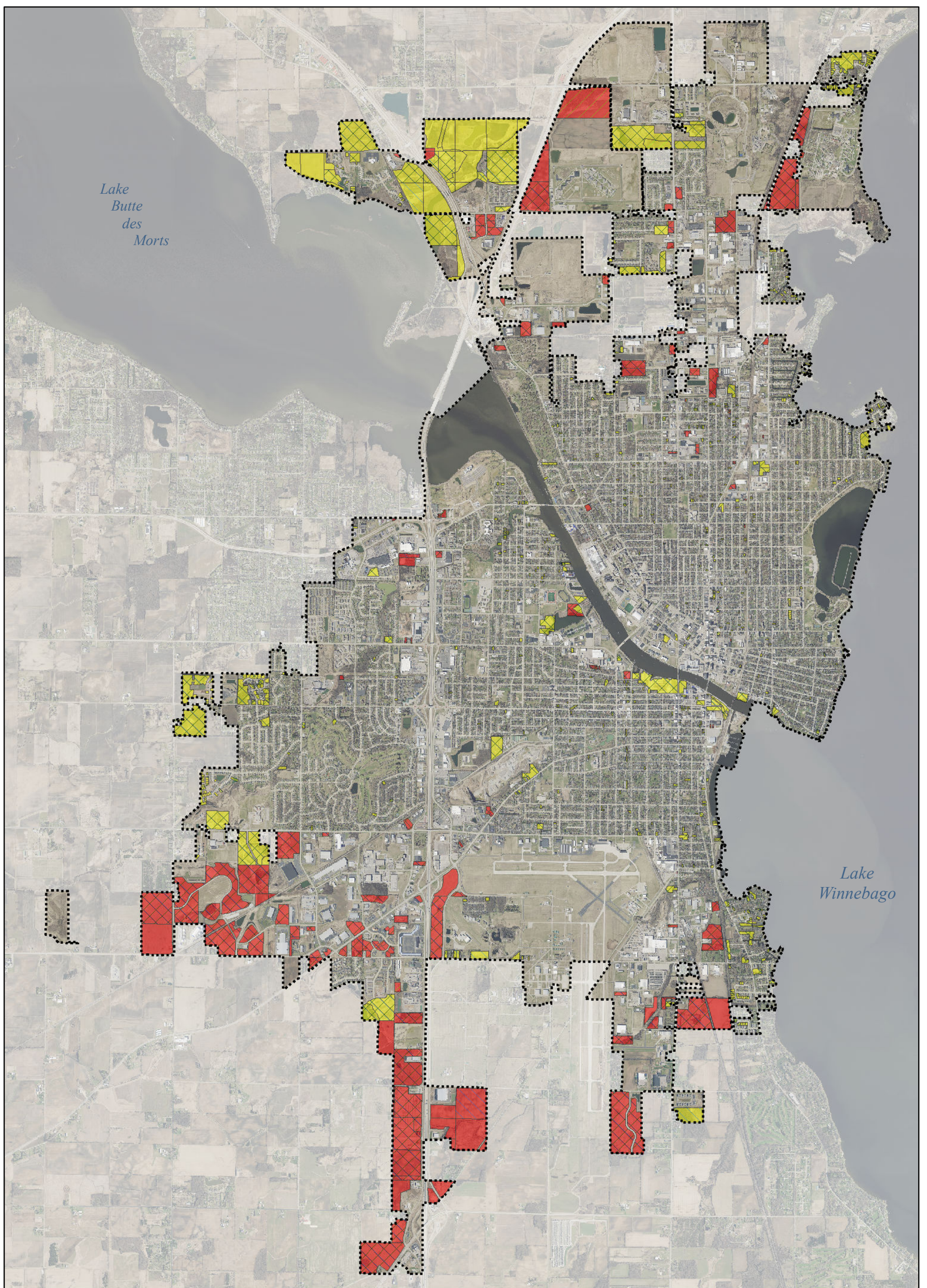
Tax ID	Street Location	Acres	Zoning		
			Zoning Code	Residential	Non-Residential
91282750000	RYF RD	7.42	SR-5-PD	Single Family Residential - 5 PD Overlay	
91416582200	ISAAC LN	0.26	SR-5-PD	Single Family Residential - 5 PD Overlay	
91416582300	ISAAC LN	0.24	SR-5-PD	Single Family Residential - 5 PD Overlay	
91416582400	ISAAC LN	0.24	SR-5-PD	Single Family Residential - 5 PD Overlay	
91416582500	ISAAC LN	0.24	SR-5-PD	Single Family Residential - 5 PD Overlay	
91416582600	ISAAC LN	0.24	SR-5-PD	Single Family Residential - 5 PD Overlay	
91416582700	ISAAC LN	0.26	SR-5-PD	Single Family Residential - 5 PD Overlay	
Single Family Residential - 5 PD Overlay Total:		51.28	Acres		
90805890100	BAY SHORE DR	1.77	SR-5PD-LRO	Single Family Residential - 5 PD, LRO Overlays	
Single Family Residential - 5 PD, LRO Overlays		1.77	Acres		
90203850000	WINNEBAGO AVE	0.19	SR-9	Single Family Residential - 9	
90206470000	LEGION PL	0.12	SR-9	Single Family Residential - 9	
90602570000	BISMARCK AVE	0.11	SR-9	Single Family Residential - 9	
90602660000	DAKOTA ST	0.11	SR-9	Single Family Residential - 9	
90602960100	W 5TH AVE	0.69	SR-9	Single Family Residential - 9	
90604940000	BISMARCK AVE	0.17	SR-9	Single Family Residential - 9	
90605550000	W 8TH AVE	0.10	SR-9	Single Family Residential - 9	
90605710000	W 9TH AVE	0.47	SR-9	Single Family Residential - 9	
90605790000	W 9TH AVE	0.04	SR-9	Single Family Residential - 9	
90605940000	W 8TH AVE	0.10	SR-9	Single Family Residential - 9	
90803640000	LAKE ST	0.33	SR-9	Single Family Residential - 9	
90803660000	LAKE ST	0.18	SR-9	Single Family Residential - 9	
90804760000	CEAPE AVE	0.11	SR-9	Single Family Residential - 9	
91100060000	BOWEN ST	0.11	SR-9	Single Family Residential - 9	
91100250000	BOYD ST	0.12	SR-9	Single Family Residential - 9	
91102350000	BOWEN ST	0.18	SR-9	Single Family Residential - 9	
91106700000	EVANS ST	0.13	SR-9	Single Family Residential - 9	
91203310000	WESTERN ST	0.14	SR-9	Single Family Residential - 9	
91203670000	LIBERTY ST	0.14	SR-9	Single Family Residential - 9	
91204420000	WALNUT ST	0.13	SR-9	Single Family Residential - 9	
91204470000	WALNUT ST	0.13	SR-9	Single Family Residential - 9	
91204480000	WALNUT ST	0.19	SR-9	Single Family Residential - 9	
91205120000	REED AVE	0.13	SR-9	Single Family Residential - 9	
91205440000	WALNUT ST	0.13	SR-9	Single Family Residential - 9	
91206190100	LIBERTY ST	0.15	SR-9	Single Family Residential - 9	
91206560000	SPRUCE ST	0.14	SR-9	Single Family Residential - 9	
91207280000	BEECH ST	0.14	SR-9	Single Family Residential - 9	
91207360000	BEECH ST	0.13	SR-9	Single Family Residential - 9	
91207390000	BEECH ST	0.14	SR-9	Single Family Residential - 9	
91208040000	CEDAR ST	0.13	SR-9	Single Family Residential - 9	
91208160000	W NEW YORK AVE	0.15	SR-9	Single Family Residential - 9	
91208890000	W BENT AVE	0.15	SR-9	Single Family Residential - 9	
91209190000	WISCONSIN ST	0.13	SR-9	Single Family Residential - 9	
91211250000	WESTERN ST	0.13	SR-9	Single Family Residential - 9	
91212760000	ROOSEVELT AVE	0.23	SR-9	Single Family Residential - 9	
91213180000	HAMILTON ST	0.14	SR-9	Single Family Residential - 9	
91213390000	W LINWOOD AVE	0.17	SR-9	Single Family Residential - 9	
91213720000	COLUMBIA AVE	0.10	SR-9	Single Family Residential - 9	
91216920100	PLYMOUTH ST	0.18	SR-9	Single Family Residential - 9	
91217470000	OLIVE ST	0.16	SR-9	Single Family Residential - 9	
91217490000	OLIVE ST	0.16	SR-9	Single Family Residential - 9	
91302510000	W 9TH AVE	0.17	SR-9	Single Family Residential - 9	
91303360000	W 9TH AVE	0.19	SR-9	Single Family Residential - 9	
91304070000	W 11TH AVE	0.17	SR-9	Single Family Residential - 9	
91304560000	W SOUTH PARK AVE	0.14	SR-9	Single Family Residential - 9	
91305790000	W 11TH AVE	0.17	SR-9	Single Family Residential - 9	
91306290000	OSBORN AVE	0.14	SR-9	Single Family Residential - 9	
91400220100	S MAIN ST	0.23	SR-9	Single Family Residential - 9	
91400710000	NEBRASKA ST	0.25	SR-9	Single Family Residential - 9	
91400730102		0.44	SR-9	Single Family Residential - 9	
91400820400	NEBRASKA ST	0.58	SR-9	Single Family Residential - 9	
91401190000	DOTY ST	0.50	SR-9	Single Family Residential - 9	
91401600000	DOTY ST	0.16	SR-9	Single Family Residential - 9	
91402090000	DOTY ST	0.15	SR-9	Single Family Residential - 9	
91403350000	W 24TH AVE	0.16	SR-9	Single Family Residential - 9	
91403450000	W 24TH AVE	0.16	SR-9	Single Family Residential - 9	
91403460000	S MAIN ST	0.27	SR-9	Single Family Residential - 9	
91404190000	W 17TH AVE	0.17	SR-9	Single Family Residential - 9	
91404900000	W 19TH AVE	0.17	SR-9	Single Family Residential - 9	
91406800000	MONTANA ST	0.17	SR-9	Single Family Residential - 9	
91406810000	MONTANA ST	0.17	SR-9	Single Family Residential - 9	
91406880000	W 19TH AVE	0.18	SR-9	Single Family Residential - 9	
91407180100	W 20TH AVE	0.15	SR-9	Single Family Residential - 9	
91408090000	DELAWARE ST	0.16	SR-9	Single Family Residential - 9	

Tax ID	Street Location	Acres	Zoning		
			Zoning Code	Residential	Non-Residential
91408120000	DELAWARE ST	0.16	SR-9	Single Family Residential - 9	
91409830100	ALASKA ST	0.22	SR-9	Single Family Residential - 9	
91409880100	W 20TH AVE	0.36	SR-9	Single Family Residential - 9	
91426432502	MICHIGAN ST	0.19	SR-9	Single Family Residential - 9	
91500900000	CENTRAL ST	0.13	SR-9	Single Family Residential - 9	
91501010000	W CUSTER AVE	0.21	SR-9	Single Family Residential - 9	
91501010100	W CUSTER AVE	0.15	SR-9	Single Family Residential - 9	
91501960000	BURDICK ST	0.17	SR-9	Single Family Residential - 9	
91502760000	W BENT AVE	0.16	SR-9	Single Family Residential - 9	
91503730000	N MAIN ST	0.16	SR-9	Single Family Residential - 9	
91504400000	ASHLAND ST	0.16	SR-9	Single Family Residential - 9	
91504990000	E CUSTER AVE	0.16	SR-9	Single Family Residential - 9	
91505310000	HARRISON ST	0.12	SR-9	Single Family Residential - 9	
91505770000	HARRISON ST	0.12	SR-9	Single Family Residential - 9	
91512311005	MOUNT VERNON ST	0.16	SR-9	Single Family Residential - 9	
91512311007	MOUNT VERNON ST	0.15	SR-9	Single Family Residential - 9	
91515000000	VIOLA AVE	0.17	SR-9	Single Family Residential - 9	
91516150000	ASHLAND ST	0.15	SR-9	Single Family Residential - 9	
91516300000	ASHLAND ST	0.15	SR-9	Single Family Residential - 9	
91516330000	ASHLAND ST	0.15	SR-9	Single Family Residential - 9	
91516390000	HARRISON ST	0.15	SR-9	Single Family Residential - 9	
91516590000	W LINWOOD AVE	0.26	SR-9	Single Family Residential - 9	
91516630000	W LINWOOD AVE	0.21	SR-9	Single Family Residential - 9	
91516700000	W LINWOOD AVE	0.17	SR-9	Single Family Residential - 9	
91516900000	N MAIN ST	0.15	SR-9	Single Family Residential - 9	
91517000000	JEFFERSON ST	0.15	SR-9	Single Family Residential - 9	
91517010000	JEFFERSON ST	0.15	SR-9	Single Family Residential - 9	
91517140000	JEFFERSON ST	0.16	SR-9	Single Family Residential - 9	
91517700000	HARRISON ST	0.15	SR-9	Single Family Residential - 9	
91517910000	N MAIN ST	0.15	SR-9	Single Family Residential - 9	
91518020000	GENEVA ST	0.15	SR-9	Single Family Residential - 9	
91518030000	GENEVA ST	0.15	SR-9	Single Family Residential - 9	
91518300000	BACON AVE	0.13	SR-9	Single Family Residential - 9	
91518910100	ALLEN AVE	0.16	SR-9	Single Family Residential - 9	
91519060000	ASHLAND ST	0.16	SR-9	Single Family Residential - 9	
91601340100	DOVE ST	0.12	SR-9	Single Family Residential - 9	
91601730000	DOVE ST	0.08	SR-9	Single Family Residential - 9	
91602200000	HAWK ST	0.14	SR-9	Single Family Residential - 9	
91602220000	HAWK ST	0.14	SR-9	Single Family Residential - 9	
91602230000	HAWK ST	0.14	SR-9	Single Family Residential - 9	
91602240000	HAWK ST	0.14	SR-9	Single Family Residential - 9	
91602250000	N LARK ST	0.14	SR-9	Single Family Residential - 9	
91602260000	N LARK ST	0.14	SR-9	Single Family Residential - 9	
91602270000	N LARK ST	0.14	SR-9	Single Family Residential - 9	
91602310000	HAWK ST	0.28	SR-9	Single Family Residential - 9	
91602330000	HAWK ST	0.14	SR-9	Single Family Residential - 9	
91602640000	HAWK ST	0.41	SR-9	Single Family Residential - 9	
91602860000	N EAGLE ST	0.29	SR-9	Single Family Residential - 9	
91602970000	N SAWYER ST	0.26	SR-9	Single Family Residential - 9	
91603050000	DOVE ST	0.14	SR-9	Single Family Residential - 9	
91603270000	HAWK ST	0.20	SR-9	Single Family Residential - 9	
91604750100	FILLMORE AVE	0.14	SR-9	Single Family Residential - 9	
91605030000	VAN BUREN AVE	0.17	SR-9	Single Family Residential - 9	
91605790000	ADAMS AVE	0.19	SR-9	Single Family Residential - 9	
91605820000	PIERCE AVE	0.14	SR-9	Single Family Residential - 9	
91605950000	PIERCE AVE	0.14	SR-9	Single Family Residential - 9	
91606240000	JOSSLYN ST	0.16	SR-9	Single Family Residential - 9	
91606370000	PIERCE AVE	0.14	SR-9	Single Family Residential - 9	
91606560100	TAFT AVE	0.20	SR-9	Single Family Residential - 9	
91606580000	ADAMS AVE	0.14	SR-9	Single Family Residential - 9	
91607120000	TYLER AVE	0.14	SR-9	Single Family Residential - 9	
91607420200	TYLER AVE	0.14	SR-9	Single Family Residential - 9	
91607560000	ARTHUR AVE	0.14	SR-9	Single Family Residential - 9	
91607670000	VAN BUREN AVE	0.14	SR-9	Single Family Residential - 9	
91607900000	PIERCE AVE	0.14	SR-9	Single Family Residential - 9	
91608780000	RUSH AVE	0.14	SR-9	Single Family Residential - 9	
91609700000	N LARK ST	0.14	SR-9	Single Family Residential - 9	
Single Family Residential - 9 Total:		22.98	Acres		
91400730102		1.57	SR-9-PD	Single Family Residential - 9 PD Overlay	
Single Family Residential - 9 PD Overlay Total:		1.57	Acres		
90200430000	OTTER AVE	0.13	TR-10	Two Family Residential - 10	
90200440000	OTTER AVE	0.13	TR-10	Two Family Residential - 10	
90201690000	BAY ST	0.20	TR-10	Two Family Residential - 10	
90301040000	W 8TH AVE	0.10	TR-10	Two Family Residential - 10	

Tax ID	Street Location	Acres	Zoning		
			Zoning Code	Residential	Non-Residential
90301060000	W 8TH AVE	0.10	TR-10	Two Family Residential - 10	
90301070000	W 8TH AVE	0.10	TR-10	Two Family Residential - 10	
90301100000	W 9TH AVE	0.10	TR-10	Two Family Residential - 10	
90301110000	W 9TH AVE	0.10	TR-10	Two Family Residential - 10	
90301120000	W 9TH AVE	0.10	TR-10	Two Family Residential - 10	
90301150000	W 9TH AVE	0.10	TR-10	Two Family Residential - 10	
90302550000	W 11TH AVE	0.17	TR-10	Two Family Residential - 10	
90305730000	NEBRASKA ST	0.37	TR-10	Two Family Residential - 10	
90306030000	W 17TH AVE	0.24	TR-10	Two Family Residential - 10	
90507280000	HIGH AVE	0.17	TR-10	Two Family Residential - 10	
90600180000	W 4TH AVE	0.14	TR-10	Two Family Residential - 10	
90600200100	W 4TH AVE	0.14	TR-10	Two Family Residential - 10	
90600200200	W 5TH AVE	0.14	TR-10	Two Family Residential - 10	
90600420000	W 5TH AVE	0.14	TR-10	Two Family Residential - 10	
90600430100	W 5TH AVE	0.13	TR-10	Two Family Residential - 10	
90600770000	W 7TH AVE	0.11	TR-10	Two Family Residential - 10	
90600780000	W 7TH AVE	0.14	TR-10	Two Family Residential - 10	
90801810000	OTTER AVE	0.19	TR-10	Two Family Residential - 10	
90806110000	MILL ST	0.23	TR-10	Two Family Residential - 10	
90902760000	W 7TH AVE	0.10	TR-10	Two Family Residential - 10	
90905310000	W 5TH AVE	0.14	TR-10	Two Family Residential - 10	
90905340000	W 6TH AVE	0.14	TR-10	Two Family Residential - 10	
90905720000	W 7TH AVE	0.17	TR-10	Two Family Residential - 10	
90907710000	W 16TH AVE	0.18	TR-10	Two Family Residential - 10	
90907920000	OREGON ST	0.31	TR-10	Two Family Residential - 10	
91001220000	STERLING AVE	0.12	TR-10	Two Family Residential - 10	
91001660000	MOUNT VERNON ST	0.19	TR-10	Two Family Residential - 10	
91003800000	ROCK PL	0.16	TR-10	Two Family Residential - 10	
91008720000	OSTERTAG PL	0.13	TR-10	Two Family Residential - 10	
91008730000	OSTERTAG PL	0.11	TR-10	Two Family Residential - 10	
91300830000	W 14TH AVE	0.16	TR-10	Two Family Residential - 10	
91300840000	W 14TH AVE	0.06	TR-10	Two Family Residential - 10	
91300960000	W 14TH AVE	0.17	TR-10	Two Family Residential - 10	
91301080000	W 15TH AVE	0.17	TR-10	Two Family Residential - 10	
91506330000	GRAND ST	0.16	TR-10	Two Family Residential - 10	
Two Family Residential - 10 Total:		5.94	Acres		
90400300000	MERRITT AVE	0.15	TR-10-PD	Two Family Residential - 10 - PD Overlay	
90400610000	MERRITT AVE	0.36	TR-10-PD	Two Family Residential - 10 - PD Overlay	
90401340000	MOUNT VERNON ST	0.17	TR-10-PD	Two Family Residential - 10 - PD Overlay	
90401460000	MADISON ST	0.14	TR-10-PD	Two Family Residential - 10 - PD Overlay	
90401520000	MERRITT AVE	0.12	TR-10-PD	Two Family Residential - 10 - PD Overlay	
90402100000	JEFFERSON ST	0.16	TR-10-PD	Two Family Residential - 10 - PD Overlay	
90402250000	JEFFERSON ST	0.18	TR-10-PD	Two Family Residential - 10 - PD Overlay	
90402280000	JEFFERSON ST	0.36	TR-10-PD	Two Family Residential - 10 - PD Overlay	
90402310000	JEFFERSON ST	0.09	TR-10-PD	Two Family Residential - 10 - PD Overlay	
90402320000	JEFFERSON ST	0.09	TR-10-PD	Two Family Residential - 10 - PD Overlay	
90402330000	JEFFERSON ST	0.08	TR-10-PD	Two Family Residential - 10 - PD Overlay	
90402340000	JEFFERSON ST	0.10	TR-10-PD	Two Family Residential - 10 - PD Overlay	
90402360000	JEFFERSON ST	0.09	TR-10-PD	Two Family Residential - 10 - PD Overlay	
90402370000	JEFFERSON ST	0.09	TR-10-PD	Two Family Residential - 10 - PD Overlay	
90402580000	MOUNT VERNON ST	0.09	TR-10-PD	Two Family Residential - 10 - PD Overlay	
90402680000	JEFFERSON ST	0.18	TR-10-PD	Two Family Residential - 10 - PD Overlay	
90403050000	PLEASANT ST	0.12	TR-10-PD	Two Family Residential - 10 - PD Overlay	
90403470000	E PARKWAY AVE	0.10	TR-10-PD	Two Family Residential - 10 - PD Overlay	
90404630000	GRAND ST	0.15	TR-10-PD	Two Family Residential - 10 - PD Overlay	
90405280000	GRAND ST	0.16	TR-10-PD	Two Family Residential - 10 - PD Overlay	
90703450000	CENTRAL ST	0.09	TR-10-PD	Two Family Residential - 10 - PD Overlay	
90703510000	FRANKLIN ST	0.14	TR-10-PD	Two Family Residential - 10 - PD Overlay	
90703830000	W PARKWAY AVE	0.05	TR-10-PD	Two Family Residential - 10 - PD Overlay	
91000420000	E IRVING AVE	0.13	TR-10-PD	Two Family Residential - 10 - PD Overlay	
91004030100	E LINCOLN AVE	0.09	TR-10-PD	Two Family Residential - 10 - PD Overlay	
91005140100	FRANKLIN ST	0.00	TR-10-PD	Two Family Residential - 10 - PD Overlay	
91005140200	FRANKLIN ST	0.00	TR-10-PD	Two Family Residential - 10 - PD Overlay	
91005380000	DIVISION ST	0.14	TR-10-PD	Two Family Residential - 10 - PD Overlay	
91005770000	FREDERICK ST	0.15	TR-10-PD	Two Family Residential - 10 - PD Overlay	
91103740301	GROVE ST	0.18	TR-10-PD	Two Family Residential - 10 - PD Overlay	
91103740302	GROVE ST	0.15	TR-10-PD	Two Family Residential - 10 - PD Overlay	
91103740303	GROVE ST	0.15	TR-10-PD	Two Family Residential - 10 - PD Overlay	
91103740304	GROVE ST	0.14	TR-10-PD	Two Family Residential - 10 - PD Overlay	
91103740305	GROVE ST	0.14	TR-10-PD	Two Family Residential - 10 - PD Overlay	
91103740306	GROVE ST	0.15	TR-10-PD	Two Family Residential - 10 - PD Overlay	
91301860000	W 17TH AVE	0.39	TR-10-PD	Two Family Residential - 10 - PD Overlay	
Two Family Residential - 10 - PD Overlay Total:		5.07	Acres		
90501650000	WISCONSIN ST	0.11	TR-10PDUTO	Two Family Residential - 10 - PD, UTO Overlays	

Tax ID	Street Location	Acres	Zoning		
			Zoning Code	Residential	Non-Residential
Two Family Residential - 10 - PD, UTO Overlays Total:		0.11	Acres		
90505500000	SCOTT AVE	0.14	TR-10-UTO	Two Family Residential - 10 - UTO Overlay	
Two Family Residential - 10 - UTO Overlay Total:		0.14	Acres		
90603870000	W 3RD AVE	0.34	UI	Urban Industrial	
90603880000	W 3RD AVE	0.24	UI	Urban Industrial	
90603890000	W 3RD AVE	0.17	UI	Urban Industrial	
90603900000	W 3RD AVE	0.17	UI	Urban Industrial	
90603910000	W 3RD AVE	0.17	UI	Urban Industrial	
90603930000	W 3RD AVE	0.17	UI	Urban Industrial	
91249020000	W SNELL RD	30.54	UI	Urban Industrial	
91249030000	W SNELL RD	16.35	UI	Urban Industrial	
91249040000	W SNELL RD	1.81	UI	Urban Industrial	
91504460000	ASHLAND ST	0.16	UI	Urban Industrial	
91504470000	ASHLAND ST	0.14	UI	Urban Industrial	
91504890200	HARRISON ST	1.27	UI	Urban Industrial	
91512311022	ASHLAND ST	0.15	UI	Urban Industrial	
91512311023	ASHLAND ST	0.15	UI	Urban Industrial	
91512311024	ASHLAND ST	0.15	UI	Urban Industrial	
91520850000	HARRISON ST	1.17	UI	Urban Industrial	
Urban Industrial Total:		53.15	Acres		
91278010000	OMNI DR	2.31	UI-PD	Urban Industrial PD Overlay	
91278020000	OMNI DR	2.33	UI-PD	Urban Industrial PD Overlay	
91278030000	OMNI DR	4.47	UI-PD	Urban Industrial PD Overlay	
91278040000	OMNI DR	5.00	UI-PD	Urban Industrial PD Overlay	
91278050000	OMNI DR	4.40	UI-PD	Urban Industrial PD Overlay	
91280000000	LAKE BUTTE DES MORTS DR	0.67	UI-PD	Urban Industrial PD Overlay	
91310211000	W RIPPLE AVE	39.01	UI-PD	Urban Industrial PD Overlay	
91310221002	POBEREZYNY RD	13.44	UI-PD	Urban Industrial PD Overlay	
91506060000	BROAD ST	0.20	UI-PD	Urban Industrial PD Overlay	
Urban Industrial PD Overlay Total:		71.83	Acres		
90101200000	ALGOMA BLVD	0.14	UMU	Urban Mixed Use	
90101210000	HIGH AVE	0.21	UMU	Urban Mixed Use	
90101420000	PEARL AVE	0.18	UMU	Urban Mixed Use	
90300130101	W 6TH AVE	0.10	UMU	Urban Mixed Use	
90300130102	W 6TH AVE	0.31	UMU	Urban Mixed Use	
90300470000	W 7TH AVE	0.21	UMU	Urban Mixed Use	
90303830000	W SOUTH PARK AVE	0.09	UMU	Urban Mixed Use	
90303930000	OREGON ST	0.32	UMU	Urban Mixed Use	
90306060000	S MAIN ST	0.86	UMU	Urban Mixed Use	
90402240000	N MAIN ST	0.09	UMU	Urban Mixed Use	
90600130000	W 4TH AVE	0.14	UMU	Urban Mixed Use	
90603510201	WITZEL AVE	0.46	UMU	Urban Mixed Use	
90605930000	W 8TH AVE	0.10	UMU	Urban Mixed Use	
90607940000	N SAWYER ST	0.42	UMU	Urban Mixed Use	
91000960000	JEFFERSON ST	0.15	UMU	Urban Mixed Use	
91005290000	N MAIN ST	0.11	UMU	Urban Mixed Use	
91006710000	N MAIN ST	0.13	UMU	Urban Mixed Use	
91007550000	N MAIN ST	0.17	UMU	Urban Mixed Use	
91007560100	N MAIN ST	0.14	UMU	Urban Mixed Use	
91007570000	N MAIN ST	0.03	UMU	Urban Mixed Use	
91007580000	N MAIN ST	0.10	UMU	Urban Mixed Use	
91212790000	ALGOMA BLVD	0.12	UMU	Urban Mixed Use	
91300510000	W 11TH AVE	0.17	UMU	Urban Mixed Use	
91300620000	W 12TH AVE	0.17	UMU	Urban Mixed Use	
91400240100	S MAIN ST	0.57	UMU	Urban Mixed Use	
91401010000	S MAIN ST	0.45	UMU	Urban Mixed Use	
91401020100	S MAIN ST	0.43	UMU	Urban Mixed Use	
91401080000	S MAIN ST	0.54	UMU	Urban Mixed Use	
91401090000	S MAIN ST	0.28	UMU	Urban Mixed Use	
91401120000	S MAIN ST	0.28	UMU	Urban Mixed Use	
91505340100	MOUNT VERNON ST	1.18	UMU	Urban Mixed Use	
91600300000	OSHKOSH AVE	0.16	UMU	Urban Mixed Use	
91600310000	OSHKOSH AVE	0.27	UMU	Urban Mixed Use	
91600320000	OSHKOSH AVE	0.09	UMU	Urban Mixed Use	
91600340000	OSHKOSH AVE	0.18	UMU	Urban Mixed Use	
91600350000	OSHKOSH AVE	0.18	UMU	Urban Mixed Use	
91600370000	OSHKOSH AVE	0.12	UMU	Urban Mixed Use	
91600390000	OSHKOSH AVE	0.15	UMU	Urban Mixed Use	
91600410000	FOX ST	0.06	UMU	Urban Mixed Use	
91608720000	N CAMPBELL RD	1.76	UMU	Urban Mixed Use	
91610550000	PORTER AVE	0.14	UMU	Urban Mixed Use	
Urban Mixed Use Total:		11.76	Acres		
90102440200	PEARL AVE	1.41	UMU-PD	Urban Mixed Use PD Overlay	
90300780100	W 8TH AVE	1.36	UMU-PD	Urban Mixed Use PD Overlay	

Tax ID	Street Location	Acres	Zoning		
			Zoning Code	Residential	Non-Residential
91504830300	BOWEN ST	2.24	UMU-PD	Urban Mixed Use PD Overlay	
91504830500	BOWEN ST	2.39	UMU-PD	Urban Mixed Use PD Overlay	
91504830600	E MURDOCK AVE	0.81	UMU-PD	Urban Mixed Use PD Overlay	
91505920000	GRAND ST	0.35	UMU-PD	Urban Mixed Use PD Overlay	
Urban Mixed Use PD Overlay Total:		8.56	Acres		
90102860000	JACKSON ST	0.28	UMU-PD-UTO	Urban Mixed Use PD, UTO Overlays	
Urban Mixed Use PD, UTO Overlays Total:		0.28	Acres		
90800720000	BAY SHORE DR	3.31	UMU-RFO	Urban Mixed Use RFO Overlay	
Urban Mixed Use RFO Overlay Total:		3.31	Acres		
90102840000	HIGH AVE	0.16	UMU-UTO	Urban Mixed Use UTO Overlay	
90102850000	HIGH AVE	0.14	UMU-UTO	Urban Mixed Use UTO Overlay	
Urban Mixed Use UTO Overlay Total:		0.3	Acres		
Grand Total:		2,225.56	Acres		



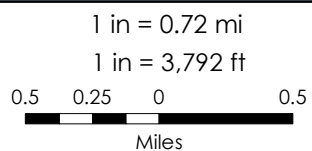
Lake
Butte
des
Morts

Lake
Winnebago

Map 2
2020 Vacant Residential & Non-Residential
Parcels with Services

Vacant Parcels: 774, 2,225.56 Acres

The City of Oshkosh creates and maintains GIS maps and data for its own use. They may show the approximate relative location of property, boundaries and other feature from a variety of sources. These map(s)/datasets are provided for information purposes only and may not be sufficient or appropriate for legal, engineering, or surveying purposes. They are provided "AS-IS" without warranties of any kind and the City of Oshkosh assumes no liability for use or misuse.



- Zoned Non-Residential: 161, 1,259.28 Acres
- Zoned Residential: 613, 966.258 Acres
- Water and Sewer Available, 696, 1,569.47 Acres
- Sewer Available, 4 Parcels, 72.66 Acres
- Water Available, 17 Parcels, 98.33 Acres

Table 4: Vacant Residential and Non-Residential Parcels with Services

Tax ID	Street Location	Acres	Zoning			Water	Sanitary
			Zoning Code	Residential	Non-Residential		
91329400000	UNIVERSAL ST	1.58	BP		Business Park	Yes	Yes
91329400100	UNIVERSAL ST	0.85	BP		Business Park	Yes	Yes
91329400400	ENTERPRISE DR	3.82	BP		Business Park	Yes	Yes
91329400503	ENTERPRISE DR	1.05	BP		Business Park	Yes	Yes
91329400504	ENTERPRISE DR	1.47	BP		Business Park	Yes	Yes
91329400900	UNIVERSAL CT	0.69	BP		Business Park	Yes	Yes
91329401500	ENTERPRISE DR	0.95	BP		Business Park	Yes	Yes
91329401600	ENTERPRISE DR	1.02	BP		Business Park	Yes	Yes
91329401700	ENTERPRISE DR	1.01	BP		Business Park	Yes	Yes
91329401800	UNIVERSAL ST	0.93	BP		Business Park	Yes	Yes
91329401900	W WAUKAU AVE	1.24	BP		Business Park	Yes	Yes
91329450000	STATE ROAD 44	8.38	BP		Business Park	Yes	Yes
91519370300	DOCTORS CT	0.14	BP		Business Park	Yes	Yes
Business Park Total:		23.13	Acres				
91329103100	STATE ROAD 91	2.26	BP-PD		Business Park PD Overlay	Yes	Yes
91329103201	STATE ROAD 91	1.34	BP-PD		Business Park PD Overlay	Yes	No
91329103301	STATE ROAD 91	0.01	BP-PD		Business Park PD Overlay	No	No
91329104000	STATE ROAD 91	3.73	BP-PD		Business Park PD Overlay	Yes	Yes
91329470000	STATE ROAD 44	2.47	BP-PD		Business Park PD Overlay	Yes	Yes
Business Park PD Overlay Total:		9.81	Acres				
91610870801	OSHKOSH AVE	1.32	CBP-PD		Corporate Business Park PD Overlay	Yes	Yes
91610900000	RATH LN	0.20	CBP-PD			Yes	Yes
91610940000	OSHKOSH AVE	0.29	CBP-PD			Yes	Yes
Corporate Business Park PD Overlay Total:		1.81	Acres				
90301010000	W 8TH AVE	0.10	CMU	Central Mixed-Use		Yes	Yes
90302140000	OREGON ST	0.09	CMU	Central Mixed-Use		Yes	Yes
90303280000	OREGON ST	0.11	CMU	Central Mixed-Use		Yes	Yes
90900690000	W 9TH AVE	0.14	CMU	Central Mixed-Use		Yes	Yes
Central Mixed-Use Total:		0.44	Acres				
90302450000	W 10TH AVE	0.17	CMU-PD	Central Mixed-Use PD Overlay		Yes	Yes
90303090000	W 11TH AVE	0.04	CMU-PD	Central Mixed-Use PD Overlay		Yes	Yes
90303100000	S MAIN ST	0.11	CMU-PD	Central Mixed-Use PD Overlay		Yes	Yes
90303120000	S MAIN ST	0.13	CMU-PD	Central Mixed-Use PD Overlay		Yes	Yes
Central Mixed-Use PD Overlay Total:		0.45	Acres				
90608761300	WITZEL AVE	0.34	DR-6	Duplex Residential - 6		Yes	Yes
91216040000	W LINWOOD AVE	0.14	DR-6	Duplex Residential - 6		Yes	Yes
91218990000	VIOLA AVE	0.19	DR-6	Duplex Residential - 6		Yes	Yes
91416760800	CHERRY PARK CT	0.54	DR-6	Duplex Residential - 6		Yes	Yes
91416761000	CHERRY PARK CT	0.28	DR-6	Duplex Residential - 6		Yes	Yes
91416761100	CHERRY PARK CT	0.26	DR-6	Duplex Residential - 6		Yes	Yes
91416761200	CHERRY PARK CT	0.26	DR-6	Duplex Residential - 6		Yes	Yes
91416761300	CHERRY PARK CT	0.31	DR-6	Duplex Residential - 6		Yes	Yes
91532100000	JACKSON ST	2.89	DR-6	Duplex Residential - 6		Yes	Yes
91532300100	KOPE AVE	0.19	DR-6	Duplex Residential - 6		Yes	Yes
91532420000	JACKSON ST	1.52	DR-6	Duplex Residential - 6		Yes	Yes
91621540500	N WESTHAVEN DR	0.30	DR-6	Duplex Residential - 6		Yes	No
Duplex Residential - 6 Total:		7.22	Acres				
91102990102	GROVE ST	0.30	DR-6-PD	Duplex Residential - 6 PD Overlay		Yes	Yes
91102990103	GROVE ST	0.28	DR-6-PD	Duplex Residential - 6 PD Overlay		Yes	Yes
91102990104	GROVE ST	0.28	DR-6-PD	Duplex Residential - 6 PD Overlay		Yes	Yes
91102990105	GROVE ST	0.28	DR-6-PD	Duplex Residential - 6 PD Overlay		Yes	Yes
91279140000		4.48	DR-6-PD	Duplex Residential - 6 PD Overlay		No	No
Duplex Residential - 6 PD Overlay Total:		5.62	Acres				
90302720000	E 11TH AVE	0.17	HI		Heavy Industrial	Yes	Yes
90302740000	E 11TH AVE	0.17	HI		Heavy Industrial	Yes	Yes
91219890000	VINLAND ST	7.74	HI		Heavy Industrial	Yes	Yes
91219930000	VINLAND ST	7.73	HI		Heavy Industrial	Yes	Yes
91225000103	STILLMAN DR	6.26	HI		Heavy Industrial	Yes	Yes
91225200000	W FERNAU AVE	1.09	HI		Heavy Industrial	Yes	Yes
91225800203	FERNAU CT	2.58	HI		Heavy Industrial	Yes	Yes
91225800801	PROGRESS DR	2.73	HI		Heavy Industrial	No	No
91328560200	W 20TH AVE	1.00	HI		Heavy Industrial	Yes	Yes
91329000000	UNIVERSAL ST	7.10	HI		Heavy Industrial	Yes	Yes
91329103007	S OAKWOOD RD	1.57	HI		Heavy Industrial	Yes	Yes
91329120300	STATE ROAD 44	7.20	HI		Heavy Industrial	Yes	Yes
91329200000	STATE ROAD 91	4.36	HI		Heavy Industrial	Yes	Yes
91329200300	ATLAS AVE	9.61	HI		Heavy Industrial	Yes	Yes
91329200500	STATE ROAD 91	2.50	HI		Heavy Industrial	Yes	No
91329220000	ATLAS AVE	6.98	HI		Heavy Industrial	Yes	Yes
91329230100	GLOBAL PKWY	2.78	HI		Heavy Industrial	Yes	Yes
91329230200	ATLAS AVE	11.00	HI		Heavy Industrial	Yes	Yes
91329240000	GLOBAL PKWY	3.66	HI		Heavy Industrial	Yes	Yes
91329250000	STATE ROAD 91	24.09	HI		Heavy Industrial	Yes	Yes
91334050000	W 20TH AVE	0.92	HI		Heavy Industrial	No	No
91364000200	S OAKWOOD RD	23.21	HI		Heavy Industrial	Yes	Yes
91411210100	W RIPPLE AVE	21.83	HI		Heavy Industrial	Yes	Yes
91411220100	W RIPPLE AVE	47.05	HI		Heavy Industrial	Yes	Yes
91412600100	W 28TH AVE	2.60	HI		Heavy Industrial	Yes	Yes
91413210200	BRADLEY ST	7.83	HI		Heavy Industrial	Yes	Yes

Tax ID	Street Location	Acres	Zoning			Water	Sanitary
			Zoning Code	Residential	Non-Residential		
91413210300	BRADLEY ST	0.28	HI		Heavy Industrial	Yes	Yes
91413220000	BRADLEY ST	9.86	HI		Heavy Industrial	Yes	Yes
91413420100	OREGON ST	0.92	HI		Heavy Industrial	Yes	Yes
91413620105	MEDALIST DR	1.89	HI		Heavy Industrial	Yes	Yes
91413670000	W 35TH AVE	3.86	HI		Heavy Industrial	Yes	Yes
91413670500	W 35TH AVE	6.19	HI		Heavy Industrial	No	No
91413670800	W 35TH AVE	2.69	HI		Heavy Industrial	Yes	Yes
91413680200	MARVEL DR	6.25	HI		Heavy Industrial	Yes	Yes
91413680300	MARVEL DR	0.52	HI		Heavy Industrial	Yes	Yes
91421100000	OREGON ST	35.87	HI		Heavy Industrial	Yes	Yes
91421110000	OREGON ST	25.74	HI		Heavy Industrial	No	No
91501211000	MOSER ST	15.47	HI		Heavy Industrial	Yes	Yes
91519600300	N MAIN ST	10.12	HI		Heavy Industrial	Yes	Yes
91519600501	JACKSON ST	0.88	HI		Heavy Industrial	Yes	Yes
Heavy Industrial Total: 334.3 Acres							
91334120300	COMPASS WAY	52.76	HI-PD		Heavy Industrial PD Overlay	Yes	Yes
91334130101	COMPASS WAY	20.54	HI-PD		Heavy Industrial PD Overlay	Yes	Yes
91334130103	COMPASS WAY	9.34	HI-PD		Heavy Industrial PD Overlay	Yes	Yes
91334150100	COMPASS WAY	5.88	HI-PD		Heavy Industrial PD Overlay	Yes	Yes
91334150200	COMPASS WAY	0.73	HI-PD		Heavy Industrial PD Overlay	Yes	Yes
91334500000	CLAIRVILLE RD	38.18	HI-PD		Heavy Industrial PD Overlay	No	No
91334510000	CLAIRVILLE RD	39.40	HI-PD		Heavy Industrial PD Overlay	Yes	Yes
Heavy Industrial PD Overlay Total: 166.83 Acres							
90400470000	NORTHWESTERN AVE	0.11	I		Institutional	Yes	Yes
91008540000	E NEW YORK AVE	0.17	I		Institutional	Yes	Yes
91201470000	ALGOMA BLVD	1.21	I		Institutional	Yes	Yes
91249010000	SUNNYVIEW RD	58.29	I		Institutional	No	Yes
91300740000	W SOUTH PARK AVE	0.17	I		Institutional	Yes	Yes
91323340000	POBEREZNY RD	1.85	I		Institutional	Yes	Yes
91554000000	COUNTY ROAD A	1.17	I		Institutional	Yes	Yes
91554010000	COUNTY ROAD A	42.47	I		Institutional	Yes	Yes
91554010100	SHERMAN RD	4.39	I		Institutional	Yes	Yes
91554070000	SHERMAN RD	0.77	I		Institutional	Yes	Yes
91554080000	COUNTY ROAD A	13.28	I		Institutional	Yes	Yes
91608710600	N CAMPBELL RD	5.24	I		Institutional	Yes	Yes
Institutional Total: 129.12 Acres							
90401880000	E PARKWAY AVE	0.10	I-PD		Institutional PD Overlay	Yes	Yes
90600060101	W 4TH AVE	1.99	I-PD		Institutional PD Overlay	Yes	Yes
90613630000	S WESTHAVEN DR	0.72	I-PD		Institutional PD Overlay	No	No
91324250100	POBEREZNY RD	14.74	I-PD		Institutional PD Overlay	No	No
91324250300	POBEREZNY RD	1.93	I-PD		Institutional PD Overlay	No	No
91324260100	33 WAUPUN RD	36.85	I-PD		Institutional PD Overlay	No	No
91324260200	WAUPUN RD	2.18	I-PD		Institutional PD Overlay	No	No
91514910100	VIOLA AVE	1.07	I-PD		Institutional PD Overlay	Yes	Yes
Institutional PD Overlay Total: 59.58 Acres							
91278250000	FOUNTAIN AVE	2.86	MH-9-PD	Mobile Home Residential - 9 PD Overlay		Yes	Yes
Mobile Home Residential - 9 PD Overlay Total: 2.86 Acres							
90609570000	JOSSLYN ST	2.52	MR-12	Multi-Family Residential - 12		Yes	Yes
90609570100	JOSSLYN ST	6.63	MR-12	Multi-Family Residential - 12		Yes	Yes
90611930000	WITZEL AVE	0.27	MR-12	Multi-Family Residential - 12		Yes	Yes
91250190000	EICHSTADT RD	6.67	MR-12	Multi-Family Residential - 12		Yes	Yes
91250200000	EICHSTADT RD	0.84	MR-12	Multi-Family Residential - 12		Yes	Yes
91307230100	W SOUTH PARK AVE	0.20	MR-12	Multi-Family Residential - 12		Yes	Yes
91307230200	W SOUTH PARK AVE	0.33	MR-12	Multi-Family Residential - 12		Yes	Yes
91307360201	00 OSBORN AVE	9.93	MR-12	Multi-Family Residential - 12		Yes	Yes
91311971300	S OAKWOOD RD	0.69	MR-12	Multi-Family Residential - 12		Yes	Yes
91329343000	W 20TH AVE	17.33	MR-12	Multi-Family Residential - 12		Yes	Yes
91329600202	RUFFED GROUSE WAY	20.19	MR-12	Multi-Family Residential - 12		Yes	Yes
91329600401	RUFFED GROUSE WAY	8.99	MR-12	Multi-Family Residential - 12		Yes	Yes
91334000000	W 20TH AVE	16.25	MR-12	Multi-Family Residential - 12		Yes	Yes
91334010100	W 20TH AVE	2.42	MR-12	Multi-Family Residential - 12		No	No
91416400200	FOND DU LAC RD	1.90	MR-12	Multi-Family Residential - 12		Yes	Yes
91523540000	BOWEN ST	0.20	MR-12	Multi-Family Residential - 12		Yes	Yes
91600780100	GRAHAM AVE	0.19	MR-12	Multi-Family Residential - 12		Yes	Yes
91601330600	REPP AVE	0.27	MR-12	Multi-Family Residential - 12		Yes	Yes
91601330900	PUNHOQUA ST	0.23	MR-12	Multi-Family Residential - 12		Yes	Yes
Multi-Family Residential - 12 Total: 96.05 Acres							
91265000100	JACKSON ST	43.01	MR-12-PD	Multi-Family Residential - 12 PD Overlay		Yes	Yes
91265100100	JACKSON ST	9.56	MR-12-PD	Multi-Family Residential - 12 PD Overlay		No	Yes
91278200000	GLENVIEW LN	9.21	MR-12-PD	Multi-Family Residential - 12 PD Overlay		No	No
91278220000	GLENVIEW LN	2.94	MR-12-PD	Multi-Family Residential - 12 PD Overlay		Yes	Yes
91278230000	GLENVIEW LN	39.90	MR-12-PD	Multi-Family Residential - 12 PD Overlay		Yes	Yes
91278240000	GLENVIEW LN	2.39	MR-12-PD	Multi-Family Residential - 12 PD Overlay		No	Yes
91279120000		17.79	MR-12-PD	Multi-Family Residential - 12 PD Overlay		Yes	Yes
91279130000		6.37	MR-12-PD	Multi-Family Residential - 12 PD Overlay		No	No
91279140000		5.42	MR-12-PD	Multi-Family Residential - 12 PD Overlay		Yes	Yes
91279140000		19.61	MR-12-PD	Multi-Family Residential - 12 PD Overlay		No	No
91279150000		0.22	MR-12-PD	Multi-Family Residential - 12 PD Overlay		No	No
91334010000	W 20TH AVE	16.41	MR-12-PD	Multi-Family Residential - 12 PD Overlay		Yes	Yes
91411230300	OREGON ST	16.42	MR-12-PD	Multi-Family Residential - 12 PD Overlay		Yes	No

Tax ID	Street Location	Acres	Zoning			Water	Sanitary
			Zoning Code	Residential	Non-Residential		
91416580400	ISAAC LN	0.38	MR-12-PD	Multi-Family Residential - 12 PD Overlay		Yes	Yes
91416580500	ISAAC LN	0.37	MR-12-PD	Multi-Family Residential - 12 PD Overlay		Yes	Yes
91416580600	ISAAC LN	0.37	MR-12-PD	Multi-Family Residential - 12 PD Overlay		Yes	Yes
91416580700	ISAAC LN	0.37	MR-12-PD	Multi-Family Residential - 12 PD Overlay		Yes	Yes
91416583500	ISAAC LN	0.37	MR-12-PD	Multi-Family Residential - 12 PD Overlay		Yes	Yes
91621650000	PATRIOT LN	3.05	MR-12-PD	Multi-Family Residential - 12 PD Overlay		Yes	Yes
Multi-Family Residential - 12 PD Overlay Total:			194.16	Acres			
91221540000	WISCONSIN ST	0.23	MR-20	Multi-Family Residential - 20		Yes	Yes
91221550000	WISCONSIN ST	0.23	MR-20	Multi-Family Residential - 20		Yes	Yes
91413201502	W WAUKAU AVE	1.31	MR-20	Multi-Family Residential - 20		Yes	Yes
Multi-Family Residential - 20 Total:			1.77	Acres			
91250180100	LOGAN DR	4.80	MR-20-PD	Multi-Family Residential - 20 PD Overlay		Yes	Yes
91250185000	LOGAN DR	2.35	MR-20-PD	Multi-Family Residential - 20 PD Overlay		Yes	Yes
Multi-Family Residential - 20 PD Overlay Total:			7.15	Acres			
90701740000	CHURCH AVE	0.36	MR-36	Multi-Family Residential - 36		Yes	Yes
Multi-Family Residential - 36 Total:			0.36	Acres			
91104470100	E IRVING AVE	0.22	MR-36-PD	Multi-Family Residential - 36 PD Overlay		Yes	Yes
Multi-Family Residential - 36 PD Overlay Total:			0.22	Acres			
90103260000	DAWES ST	0.11	MR-36-UTO	Multi-Family Residential - 36 UTO Overlay		Yes	Yes
90103270000	CAMPUS PL	0.08	MR-36-UTO	Multi-Family Residential - 36 UTO Overlay		Yes	Yes
Multi-Family Residential - 36 UTO Overlay Total:			0.19	Acres			
91209650000	W MURDOCK AVE	0.13	NMU	Neighborhood Mixed Use		Yes	Yes
91515140000	N MAIN ST	0.27	NMU	Neighborhood Mixed Use		Yes	Yes
91515360000	JEFFERSON ST	0.17	NMU	Neighborhood Mixed Use		Yes	Yes
Neighborhood Mixed Use Total:			0.57	Acres			
90614210000	WITZEL AVE	1.99	NMU-PD	Neighborhood Mixed Use PD Overlay		Yes	Yes
91276100000	LAKE BUTTE DES MORTS DR	1.03	NMU-PD	Neighborhood Mixed Use PD Overlay		No	No
91276150000	LAKE BUTTE DES MORTS DR	37.52	NMU-PD	Neighborhood Mixed Use PD Overlay		Yes	Yes
91276250000	LAKE BUTTE DES MORTS DR	7.65	NMU-PD	Neighborhood Mixed Use PD Overlay		No	No
91276300000	LAKE BUTTE DES MORTS DR	1.62	NMU-PD	Neighborhood Mixed Use PD Overlay		No	No
91307110201	W 20TH AVE	1.52	NMU-PD	Neighborhood Mixed Use PD Overlay		Yes	Yes
Neighborhood Mixed Use PD Overlay Total:			51.33	Acres			
91334020000	W 20TH AVE	35.20	RH		Rural Holding	Yes	Yes
91334040000	W 20TH AVE	4.96	RH		Rural Holding	No	No
Rural Holding Total:			40.16	Acres			
90301330400	PIONEER DR	1.76	RMU	Riverfront Mixed Use		Yes	Yes
90301330600	PIONEER DR	0.07	RMU	Riverfront Mixed Use		Yes	Yes
90301550100	E 8TH AVE	2.60	RMU	Riverfront Mixed Use		Yes	Yes
91607840101	ADAMS AVE	0.07	RMU	Riverfront Mixed Use		Yes	Yes
91607840102	ADAMS AVE	0.07	RMU	Riverfront Mixed Use		Yes	Yes
91607840200	ADAMS AVE	0.28	RMU	Riverfront Mixed Use		Yes	Yes
91607840201	ADAMS AVE	0.39	RMU	Riverfront Mixed Use		Yes	Yes
91608680200	BAUMAN ST	0.59	RMU	Riverfront Mixed Use		Yes	Yes
91608710314	N CAMPBELL RD	2.31	RMU	Riverfront Mixed Use		Yes	Yes
Riverfront Mixed Use Total:			8.14	Acres			
90600020402	OHIO ST	0.85	RMU-PD	Riverfront Mixed Use PD Overlay		Yes	Yes
90905200000	W 5TH AVE	0.12	RMU-PD	Riverfront Mixed Use PD Overlay		Yes	Yes
91608070400	ADAMS AVE	0.75	RMU-PD	Riverfront Mixed Use PD Overlay		Yes	Yes
Riverfront Mixed Use PD Overlay Total:			1.72	Acres			
90300010100	OREGON ST	3.31	RMU-PD-RFO	Riverfront Mixed Use PD, RFO Overlays		Yes	Yes
90900010000	1 OREGON ST	21.39	RMU-PD-RFO	Riverfront Mixed Use PD, RFO Overlays		Yes	Yes
90907840101	MICHIGAN ST	1.84	RMU-PD-RFO	Riverfront Mixed Use PD, RFO Overlays		Yes	Yes
Riverfront Mixed Use PD, RFO Overlays Total:			26.54	Acres			
90301330500	E 7TH AVE	2.58	RMU-RFO	Riverfront Mixed Use RFO Overlay		Yes	Yes
90301390100	E 7TH AVE	1.48	RMU-RFO	Riverfront Mixed Use RFO Overlay		Yes	Yes
Riverfront Mixed Use RFO Overlay Total:			4.06	Acres			
90614050100	WITZEL AVE	0.32	SMU		Suburban Mixed Use	Yes	Yes
90614080000	WITZEL AVE	0.53	SMU		Suburban Mixed Use	Yes	Yes
91200010800	ALGOMA BLVD	2.40	SMU		Suburban Mixed Use	Yes	Yes
91219290100	JACKSON ST	0.58	SMU		Suburban Mixed Use	Yes	Yes
91219810000	JACKSON ST	2.28	SMU		Suburban Mixed Use	Yes	Yes
91250130000	JACKSON ST	1.47	SMU		Suburban Mixed Use	Yes	Yes
91250130100	JACKSON ST	1.35	SMU		Suburban Mixed Use	Yes	Yes
91250182500	LOGAN DR	1.74	SMU		Suburban Mixed Use	Yes	Yes
91307320000	W SOUTH PARK AVE	2.10	SMU		Suburban Mixed Use	Yes	Yes
91316380101	S WASHBURN ST	1.50	SMU		Suburban Mixed Use	Yes	Yes
91316380201	W 20TH AVE	1.50	SMU		Suburban Mixed Use	Yes	Yes
91323330000	POBEREZNY RD	14.65	SMU		Suburban Mixed Use	No	No
91323350000	POBEREZNY RD	30.83	SMU		Suburban Mixed Use	Yes	Yes
91329430500	S WASHBURN ST	3.67	SMU		Suburban Mixed Use	No	No
91329431100	STATE HIGHWAY 44	1.26	SMU		Suburban Mixed Use	Yes	No
91334212008	RIPON LN	0.47	SMU		Suburban Mixed Use	No	No
91368000000	S WASHBURN ST	30.53	SMU		Suburban Mixed Use	Yes	Yes
91369070100	STATE ROAD 26	42.79	SMU		Suburban Mixed Use	Yes	Yes
91514830000	W LINWOOD AVE	0.18	SMU		Suburban Mixed Use	Yes	Yes
91518290000	BACON AVE	0.13	SMU		Suburban Mixed Use	Yes	Yes
91519591001	W PACKER AVE	2.87	SMU		Suburban Mixed Use	Yes	Yes
91621020000	N WASHBURN ST	5.19	SMU		Suburban Mixed Use	No	No
91621120000	N WASHBURN ST	3.47	SMU		Suburban Mixed Use	Yes	No
91621580100	OMRO RD	0.27	SMU		Suburban Mixed Use	Yes	Yes

Tax ID	Street Location	Acres	Zoning			Water	Sanitary
			Zoning Code	Residential	Non-Residential		
Suburban Mixed Use Total: 152.08 Acres							
91260010000	JACKSON ST	2.30	SMU-PD		Suburban Mixed Use PD Overlay	Yes	Yes
91279140000		2.94	SMU-PD		Suburban Mixed Use PD Overlay	No	No
91279140000		1.13	SMU-PD		Suburban Mixed Use PD Overlay	No	No
91309141000	S WASHBURN ST	4.47	SMU-PD		Suburban Mixed Use PD Overlay	Yes	Yes
91310331000	WAUPUN RD	8.55	SMU-PD		Suburban Mixed Use PD Overlay	No	No
91310332000	POBEREZNY RD	4.69	SMU-PD		Suburban Mixed Use PD Overlay	No	No
91310333002	POBEREZNY RD	0.17	SMU-PD		Suburban Mixed Use PD Overlay	No	No
91325540100	S WASHBURN ST	1.90	SMU-PD		Suburban Mixed Use PD Overlay	Yes	Yes
91365060100	W WAUKAU AVE	2.42	SMU-PD		Suburban Mixed Use PD Overlay	No	Yes
91365500200	S WASHBURN ST	25.75	SMU-PD		Suburban Mixed Use PD Overlay	Yes	Yes
91366350000	S WASHBURN ST	21.96	SMU-PD		Suburban Mixed Use PD Overlay	No	No
91366500000	S WASHBURN ST	37.47	SMU-PD		Suburban Mixed Use PD Overlay	Yes	Yes
91367000000	S WASHBURN ST	30.30	SMU-PD		Suburban Mixed Use PD Overlay	Yes	Yes
91367490000	RIPPLE AVE	1.78	SMU-PD		Suburban Mixed Use PD Overlay	No	No
91367500000	51 S WASHBURN ST	33.69	SMU-PD		Suburban Mixed Use PD Overlay	Yes	Yes
91368490000	S WASHBURN ST	5.10	SMU-PD		Suburban Mixed Use PD Overlay	Yes	Yes
91368500200	W FISK AVE	14.78	SMU-PD		Suburban Mixed Use PD Overlay	No	No
91369050000	PLANEVIEW DR	11.67	SMU-PD		Suburban Mixed Use PD Overlay	Yes	Yes
91514970600	N MAIN ST	0.49	SMU-PD		Suburban Mixed Use PD Overlay	Yes	Yes
91514970700	W MURDOCK AVE	1.06	SMU-PD		Suburban Mixed Use PD Overlay	Yes	Yes
91527190100	JACKSON ST	3.08	SMU-PD		Suburban Mixed Use PD Overlay	Yes	Yes
91608700201	N KOELLER ST	1.70	SMU-PD		Suburban Mixed Use PD Overlay	Yes	Yes
Suburban Mixed Use PD Overlay Total: 217.4 Acres							
90660000000	WILDERNESS PL	10.04	SR-2	Single Family Residential - 2		Yes	Yes
90660010000	WILDERNESS PL	0.55	SR-2	Single Family Residential - 2		Yes	Yes
90660020000	WILDERNESS PL	0.55	SR-2	Single Family Residential - 2		Yes	Yes
90660030000	WILDERNESS PL	0.88	SR-2	Single Family Residential - 2		Yes	Yes
90660040000	WILDERNESS PL	0.56	SR-2	Single Family Residential - 2		Yes	Yes
90660050000	WILDERNESS PL	0.74	SR-2	Single Family Residential - 2		Yes	Yes
90660080000	WILDERNESS PL	0.55	SR-2	Single Family Residential - 2		Yes	Yes
90660090000	QUAIL RUN DR	0.50	SR-2	Single Family Residential - 2		Yes	Yes
90660120000	QUAIL RUN DR	0.72	SR-2	Single Family Residential - 2		Yes	Yes
90660170000	QUAIL RUN DR	0.27	SR-2	Single Family Residential - 2		Yes	Yes
90660180000	QUAIL RUN DR	0.61	SR-2	Single Family Residential - 2		Yes	Yes
90660200000	QUAIL RUN DR	1.08	SR-2	Single Family Residential - 2		Yes	Yes
90660230000	QUAIL RUN DR	0.63	SR-2	Single Family Residential - 2		Yes	Yes
90660240000	QUAIL RUN DR	0.55	SR-2	Single Family Residential - 2		Yes	Yes
90660250000	QUAIL RUN DR	0.65	SR-2	Single Family Residential - 2		Yes	Yes
90660260000	QUAIL RUN DR	0.72	SR-2	Single Family Residential - 2		Yes	Yes
90660270000	QUAIL RUN DR	0.67	SR-2	Single Family Residential - 2		Yes	Yes
90660280000	QUAIL RUN DR	0.59	SR-2	Single Family Residential - 2		Yes	Yes
90660290000	QUAIL RUN DR	0.78	SR-2	Single Family Residential - 2		Yes	Yes
90660330000	QUAIL RUN DR	0.69	SR-2	Single Family Residential - 2		Yes	Yes
90660340000	QUAIL RUN DR	0.53	SR-2	Single Family Residential - 2		Yes	Yes
90660350000	QUAIL RUN DR	0.49	SR-2	Single Family Residential - 2		Yes	Yes
91334334001	W WAUKAU AVE	0.90	SR-2	Single Family Residential - 2		Yes	Yes
91334334004	W WAUKAU AVE	0.89	SR-2	Single Family Residential - 2		Yes	No
91334343001	W WAUKAU AVE	0.95	SR-2	Single Family Residential - 2		Yes	No
91334344005	W WAUKAU AVE	5.75	SR-2	Single Family Residential - 2		Yes	No
Single Family Residential - 2 Total: 31.84 Acres							
91518671000	HICKORY LN	5.74	SR-2-LRO	Single Family Residential - 2 LRO Overlay		Yes	Yes
Single Family Residential - 2 LRO Overlay Total: 5.74 Acres							
91222570000	PARK RIDGE AVE	0.29	SR-3	Single Family Residential - 3		Yes	Yes
91224220000	RIVER MILL RD	0.34	SR-3	Single Family Residential - 3		Yes	Yes
91226850000	VINLAND ST	0.71	SR-3	Single Family Residential - 3		Yes	Yes
91227260000	KAITLYNN CT	0.33	SR-3	Single Family Residential - 3		Yes	Yes
91310750000	W 9TH AVE	0.22	SR-3	Single Family Residential - 3		Yes	Yes
91323360100	BURNWOOD DR	0.38	SR-3	Single Family Residential - 3		Yes	Yes
91334311010	BURNWOOD DR	0.55	SR-3	Single Family Residential - 3		Yes	No
91340740000	RUSCHFIELD DR	0.23	SR-3	Single Family Residential - 3		Yes	Yes
91346021400	MORNINGSTAR LN	0.52	SR-3	Single Family Residential - 3		Yes	Yes
91352110100	S OAKWOOD RD	0.84	SR-3	Single Family Residential - 3		No	No
91512790000	MENOMINEE DR	0.25	SR-3	Single Family Residential - 3		Yes	Yes
91519600207	LIBBEY AVE	3.14	SR-3	Single Family Residential - 3		Yes	Yes
91519810000	ANCHORAGE CT	0.26	SR-3	Single Family Residential - 3		Yes	Yes
91522290000	WHITE SWAN DR	0.25	SR-3	Single Family Residential - 3		Yes	Yes
91522340000	WHITE SWAN DR	0.26	SR-3	Single Family Residential - 3		Yes	Yes
91524700000	CLIFFVIEW DR	0.27	SR-3	Single Family Residential - 3		Yes	Yes
91525090000	BAVARIAN CT	0.26	SR-3	Single Family Residential - 3		Yes	Yes
91525100000	BAVARIAN CT	0.27	SR-3	Single Family Residential - 3		Yes	Yes
91525960000	CLIFFVIEW CT	0.29	SR-3	Single Family Residential - 3		Yes	Yes
91526190200	HICKORY CT	0.32	SR-3	Single Family Residential - 3		Yes	Yes
91560100101		15.07	SR-3	Single Family Residential - 3		Yes	Yes
91560100700	MARWAY CT	0.29	SR-3	Single Family Residential - 3		Yes	Yes
91560100800	MARWAY CT	0.31	SR-3	Single Family Residential - 3		Yes	Yes
91560100900	MARWAY CT	0.40	SR-3	Single Family Residential - 3		Yes	Yes
91560101000	SHAMBEAU DR	0.27	SR-3	Single Family Residential - 3		Yes	Yes
91560101100	SHAMBEAU DR	0.26	SR-3	Single Family Residential - 3		Yes	Yes
91560101200	SHAMBEAU DR	0.26	SR-3	Single Family Residential - 3		Yes	Yes

Tax ID	Street Location	Acres	Zoning			Water	Sanitary
			Zoning Code	Residential	Non-Residential		
91560101300	SHAMBEAU DR	0.34	SR-3	Single Family Residential - 3		Yes	Yes
91560101700	CEDAR VIEW DR	0.42	SR-3	Single Family Residential - 3		Yes	Yes
91560103200	ISLAND VIEW DR	0.43	SR-3	Single Family Residential - 3		Yes	Yes
91560103300	ISLAND VIEW DR	0.50	SR-3	Single Family Residential - 3		Yes	Yes
91560103400	ISLAND VIEW DR	0.56	SR-3	Single Family Residential - 3		Yes	Yes
91560103500	ISLAND VIEW DR	0.64	SR-3	Single Family Residential - 3		Yes	Yes
91560103600	ISLAND VIEW DR	1.02	SR-3	Single Family Residential - 3		Yes	Yes
91560103700	ISLAND VIEW DR	1.39	SR-3	Single Family Residential - 3		Yes	Yes
91560103800	ZACHER DR	0.34	SR-3	Single Family Residential - 3		Yes	Yes
91560104300	HILLWOOD RUN DR	0.33	SR-3	Single Family Residential - 3		Yes	Yes
91560104400	ZACHER DR	0.31	SR-3	Single Family Residential - 3		Yes	Yes
Single Family Residential - 3 Total:			33.12	Acres			
91518677900	HICKORY LN	0.33	SR-3-LRO	Single Family Residential - 3 LRO Overlay		Yes	Yes
91526192300	HICKORY LN	0.51	SR-3-LRO	Single Family Residential - 3 LRO Overlay		Yes	Yes
91526192400	HICKORY LN	0.26	SR-3-LRO	Single Family Residential - 3 LRO Overlay		Yes	Yes
Single Family Residential - 3 LRO Overlay Total:			1.1	Acres			
91200030300	ALGOMA BLVD	1.38	SR-3-PD	Single Family Residential - 3 PD Overlay		Yes	Yes
91280150000	RYF RD	4.06	SR-3-PD	Single Family Residential - 3 PD Overlay		Yes	Yes
91280150200	EDGEWOOD RD	0.51	SR-3-PD	Single Family Residential - 3 PD Overlay		Yes	Yes
91280150201	EDGEWOOD RD	0.51	SR-3-PD	Single Family Residential - 3 PD Overlay		Yes	Yes
91281590000	SHOREBIRD CT	0.40	SR-3-PD	Single Family Residential - 3 PD Overlay		Yes	Yes
91281600000	SHOREBIRD CT	0.34	SR-3-PD	Single Family Residential - 3 PD Overlay		Yes	Yes
91281620000	SHOREBIRD CT	0.25	SR-3-PD	Single Family Residential - 3 PD Overlay		Yes	Yes
91281650000	SHOREBIRD CT	0.37	SR-3-PD	Single Family Residential - 3 PD Overlay		Yes	Yes
Single Family Residential - 3 PD Overlay Total:			7.82	Acres			
90607910100	S SAWYER ST	0.18	SR-5	Single Family Residential - 5		Yes	Yes
90608540000	W 9TH AVE	0.58	SR-5	Single Family Residential - 5		No	No
90613240100	LILAC ST	0.19	SR-5	Single Family Residential - 5		Yes	Yes
90617470000	GRACELAND DR	0.18	SR-5	Single Family Residential - 5		Yes	Yes
90617600000	ABBEY AVE	0.18	SR-5	Single Family Residential - 5		Yes	Yes
90617610000	ABBEY AVE	0.19	SR-5	Single Family Residential - 5		Yes	Yes
90617800000	KATY CT	0.35	SR-5	Single Family Residential - 5		Yes	Yes
90658000000	FOX FIRE DR	0.41	SR-5	Single Family Residential - 5		Yes	Yes
90665020100	PAULS PL	0.28	SR-5	Single Family Residential - 5		Yes	Yes
90665020105	9TH STREET RD	16.31	SR-5	Single Family Residential - 5		Yes	Yes
90665020500	PAULS PL	0.28	SR-5	Single Family Residential - 5		Yes	Yes
90665020800	PAULS PL	0.59	SR-5	Single Family Residential - 5		Yes	Yes
90665021400	MARYS DR	0.29	SR-5	Single Family Residential - 5		Yes	Yes
90665022100	MARYS DR	0.42	SR-5	Single Family Residential - 5		Yes	Yes
90665022300	PAULS PL	0.28	SR-5	Single Family Residential - 5		Yes	Yes
90665022400	PAULS PL	0.31	SR-5	Single Family Residential - 5		Yes	Yes
91006750000	CENTRAL ST	0.08	SR-5	Single Family Residential - 5		Yes	Yes
91200180100	ALGOMA BLVD	0.34	SR-5	Single Family Residential - 5		Yes	Yes
91218230000	VINLAND ST	0.23	SR-5	Single Family Residential - 5		Yes	Yes
91218470000	WALNUT ST	0.30	SR-5	Single Family Residential - 5		Yes	Yes
91219960100	VINLAND ST	0.93	SR-5	Single Family Residential - 5		Yes	Yes
91225500000	VINLAND ST	0.51	SR-5	Single Family Residential - 5		Yes	Yes
91229650000	MINERVA ST	0.21	SR-5	Single Family Residential - 5		Yes	Yes
91250100000	FARMINGTON ST	5.55	SR-5	Single Family Residential - 5		Yes	Yes
91250179300	CHRISTIAN DR	0.27	SR-5	Single Family Residential - 5		Yes	Yes
91279100000	STEARNS DR	2.61	SR-5	Single Family Residential - 5		Yes	Yes
91279110000	STEARNS DR	2.68	SR-5	Single Family Residential - 5		No	No
91279120000		1.85	SR-5	Single Family Residential - 5		Yes	Yes
91279130000		23.75	SR-5	Single Family Residential - 5		No	No
91279140000		13.08	SR-5	Single Family Residential - 5		No	No
91279150000		40.46	SR-5	Single Family Residential - 5		No	No
91279160000	STEARNS DR	31.11	SR-5	Single Family Residential - 5		No	No
91279170000	STEARNS DR	4.30	SR-5	Single Family Residential - 5		No	No
91279500000	LAKE BUTTE DES MORTS DR	26.16	SR-5	Single Family Residential - 5		No	No
91279600000	LAKE BUTTE DES MORTS DR	1.89	SR-5	Single Family Residential - 5		Yes	Yes
91279700000	LAKE BUTTE DES MORTS DR	19.01	SR-5	Single Family Residential - 5		Yes	Yes
91279900000	LAKE BUTTE DES MORTS DR	21.89	SR-5	Single Family Residential - 5		Yes	No
91280010000	RYF RD	38.33	SR-5	Single Family Residential - 5		Yes	Yes
91304840000	W SOUTH PARK AVE	0.18	SR-5	Single Family Residential - 5		Yes	Yes
91307140100	W SOUTH PARK AVE	0.32	SR-5	Single Family Residential - 5		Yes	Yes
91307140200	W SOUTH PARK AVE	0.34	SR-5	Single Family Residential - 5		Yes	Yes
91307140300	W SOUTH PARK AVE	4.69	SR-5	Single Family Residential - 5		Yes	Yes
91308350000	W 12TH AVE	0.21	SR-5	Single Family Residential - 5		Yes	Yes
91309980000	WINDSOR ST	0.16	SR-5	Single Family Residential - 5		Yes	Yes
91310500000	W 18TH AVE	0.25	SR-5	Single Family Residential - 5		Yes	Yes
91312810000	MARICOPA DR	0.65	SR-5	Single Family Residential - 5		Yes	Yes
91319070000	W 20TH AVE	0.35	SR-5	Single Family Residential - 5		Yes	Yes
91319490000	MARICOPA DR	0.39	SR-5	Single Family Residential - 5		Yes	Yes
91319860000	MARICOPA DR	0.32	SR-5	Single Family Residential - 5		Yes	Yes
91320440000	VILLA PARK DR	0.25	SR-5	Single Family Residential - 5		Yes	Yes
91329260000	CLAIRVILLE RD	30.15	SR-5	Single Family Residential - 5		Yes	Yes
91334434004	W WAUKAU AVE	1.48	SR-5	Single Family Residential - 5		Yes	No
91334443002	W WAUKAU AVE	0.26	SR-5	Single Family Residential - 5		Yes	No
91334443005	W WAUKAU AVE	0.16	SR-5	Single Family Residential - 5		Yes	No
91336005800	CASEY TRL	0.36	SR-5	Single Family Residential - 5		Yes	Yes

Tax ID	Street Location	Acres	Zoning			Water	Sanitary
			Zoning Code	Residential	Non-Residential		
91336006101	CASEY TRL	0.30	SR-5	Single Family Residential - 5		Yes	Yes
91336007300	CLOE JUDE DR	0.19	SR-5	Single Family Residential - 5		Yes	Yes
91336130000	CASEY TRL	0.69	SR-5	Single Family Residential - 5		Yes	Yes
91336400500	CASEY TRL	0.30	SR-5	Single Family Residential - 5		Yes	Yes
91336400700	CASEY TRL	0.21	SR-5	Single Family Residential - 5		Yes	Yes
91336400800	CASEY TRL	0.21	SR-5	Single Family Residential - 5		Yes	Yes
91336400900	CASEY TRL	0.20	SR-5	Single Family Residential - 5		Yes	Yes
91336401000	CASEY TRL	0.18	SR-5	Single Family Residential - 5		Yes	Yes
91336401100	CASEY TRL	0.20	SR-5	Single Family Residential - 5		Yes	Yes
91336401600	WYATT WAY	0.20	SR-5	Single Family Residential - 5		Yes	Yes
91336401700	WYATT WAY	0.17	SR-5	Single Family Residential - 5		Yes	Yes
91336401900	WYATT WAY	0.23	SR-5	Single Family Residential - 5		Yes	Yes
91336402000	WYATT WAY	0.27	SR-5	Single Family Residential - 5		Yes	Yes
91336402100	SAGE CROSSING	0.23	SR-5	Single Family Residential - 5		Yes	Yes
91336402300	SAGE CROSSING	0.21	SR-5	Single Family Residential - 5		Yes	Yes
91336402400	SAGE CROSSING	0.18	SR-5	Single Family Residential - 5		Yes	Yes
91336402500	SAGE CROSSING	0.17	SR-5	Single Family Residential - 5		Yes	Yes
91336402600	SAGE CROSSING	0.17	SR-5	Single Family Residential - 5		Yes	Yes
91336402700	SAGE CROSSING	0.17	SR-5	Single Family Residential - 5		Yes	Yes
91336402900	MOCKINGBIRD WAY	0.17	SR-5	Single Family Residential - 5		Yes	Yes
91336403100	MOCKINGBIRD WAY	0.24	SR-5	Single Family Residential - 5		Yes	Yes
91336403300	SAGE CROSSING	0.17	SR-5	Single Family Residential - 5		Yes	Yes
91336403400	SAGE CROSSING	0.22	SR-5	Single Family Residential - 5		Yes	Yes
91336403500	SAGE CROSSING	0.20	SR-5	Single Family Residential - 5		Yes	Yes
91336403600	SAGE CROSSING	0.19	SR-5	Single Family Residential - 5		Yes	Yes
91336403700	SAGE CROSSING	0.22	SR-5	Single Family Residential - 5		Yes	Yes
91337000100	MOCKINGBIRD WAY	2.06	SR-5	Single Family Residential - 5		Yes	Yes
91342500101	PHEASANT CREEK DR	2.96	SR-5	Single Family Residential - 5		Yes	Yes
91410010200	W 17TH AVE	0.32	SR-5	Single Family Residential - 5		Yes	Yes
91412250000	KNAPP ST	0.19	SR-5	Single Family Residential - 5		Yes	Yes
91413200400	W WAUKAU AVE	2.25	SR-5	Single Family Residential - 5		Yes	Yes
91413341302	FOND DU LAC RD	1.43	SR-5	Single Family Residential - 5		Yes	No
91413343900	GIBSON CT	0.20	SR-5	Single Family Residential - 5		Yes	Yes
91413344000	GIBSON CT	0.34	SR-5	Single Family Residential - 5		Yes	Yes
91413344200	GIBSON CT	0.22	SR-5	Single Family Residential - 5		Yes	Yes
91413344300	GIBSON CT	0.17	SR-5	Single Family Residential - 5		Yes	Yes
91413344700	GIBSON CT	0.17	SR-5	Single Family Residential - 5		Yes	Yes
91413344800	GIBSON CT	0.27	SR-5	Single Family Residential - 5		Yes	Yes
91413345000	GIBSON CT	0.17	SR-5	Single Family Residential - 5		Yes	Yes
91413345300	GIBSON CT	0.19	SR-5	Single Family Residential - 5		Yes	Yes
91413660401	OREGON ST	1.42	SR-5	Single Family Residential - 5		Yes	Yes
91413750300	W WAUKAU AVE	0.34	SR-5	Single Family Residential - 5		Yes	Yes
91413980000	OREGON ST	2.32	SR-5	Single Family Residential - 5		Yes	Yes
91415500000	FOND DU LAC RD	2.50	SR-5	Single Family Residential - 5		Yes	Yes
91416582100	JACOB AVE	0.23	SR-5	Single Family Residential - 5		Yes	Yes
91416584200	ISAAC LN	0.19	SR-5	Single Family Residential - 5		Yes	Yes
91416584300	ISAAC LN	0.19	SR-5	Single Family Residential - 5		Yes	Yes
91507240000	BROAD ST	0.12	SR-5	Single Family Residential - 5		Yes	Yes
91507250000	BROAD ST	0.12	SR-5	Single Family Residential - 5		Yes	Yes
91508060000	E NEW YORK AVE	0.14	SR-5	Single Family Residential - 5		Yes	Yes
91508110000	MONROE ST	0.14	SR-5	Single Family Residential - 5		Yes	Yes
91508130000	MONROE ST	0.17	SR-5	Single Family Residential - 5		Yes	Yes
91508890000	GROVE ST	0.15	SR-5	Single Family Residential - 5		Yes	Yes
91509200000	OAK ST	0.15	SR-5	Single Family Residential - 5		Yes	Yes
91510530000	E MURDOCK AVE	0.21	SR-5	Single Family Residential - 5		Yes	Yes
91510540000	E MURDOCK AVE	0.21	SR-5	Single Family Residential - 5		Yes	Yes
91519620101	BIRCH LN	0.17	SR-5	Single Family Residential - 5		Yes	Yes
91519620102	BIRCH LN	0.19	SR-5	Single Family Residential - 5		Yes	Yes
91519620117	MACARTHUR RD	0.21	SR-5	Single Family Residential - 5		Yes	Yes
91519620118	BIRCH LN	0.17	SR-5	Single Family Residential - 5		Yes	Yes
91519623600	COUNTY ROAD A	0.22	SR-5	Single Family Residential - 5		Yes	Yes
91519629700	BIRCH LN	0.24	SR-5	Single Family Residential - 5		Yes	Yes
91530500000	JACKSON ST	9.79	SR-5	Single Family Residential - 5		Yes	Yes
91531700000	JACKSON ST	9.95	SR-5	Single Family Residential - 5		Yes	Yes
91550230000	DRIFTWOOD LN	0.27	SR-5	Single Family Residential - 5		Yes	Yes
91550240000	DRIFTWOOD LN	0.28	SR-5	Single Family Residential - 5		Yes	Yes
91550250000	DRIFTWOOD LN	0.28	SR-5	Single Family Residential - 5		Yes	Yes
91554010200	SHERMAN RD	0.07	SR-5	Single Family Residential - 5		Yes	Yes
91560110000	ISLAND VIEW DR	0.67	SR-5	Single Family Residential - 5		Yes	Yes
91560200100	SHERMAN RD	0.57	SR-5	Single Family Residential - 5		Yes	Yes
91560200200	E SUNNYVIEW RD	0.51	SR-5	Single Family Residential - 5		Yes	Yes
91560200300	E SUNNYVIEW RD	0.50	SR-5	Single Family Residential - 5		Yes	Yes
91560200401	SUNNYVIEW RD	0.50	SR-5	Single Family Residential - 5		Yes	Yes
91560200402	SUNNYVIEW RD	0.50	SR-5	Single Family Residential - 5		Yes	Yes
91560200403	SUNNYVIEW RD	0.51	SR-5	Single Family Residential - 5		Yes	Yes
91560200404	SUNNYVIEW RD	5.72	SR-5	Single Family Residential - 5		Yes	Yes
91561500301	ISLAND VIEW DR	0.10	SR-5	Single Family Residential - 5		Yes	Yes
91603280000	HAWK ST	0.26	SR-5	Single Family Residential - 5		Yes	Yes
Single Family Residential - 5 Total:			354.19	Acres			
91413340202	STONE BEACH RD	0.26	SR-5-LRO	Single Family Residential - 5 LRO Overlay		Yes	Yes

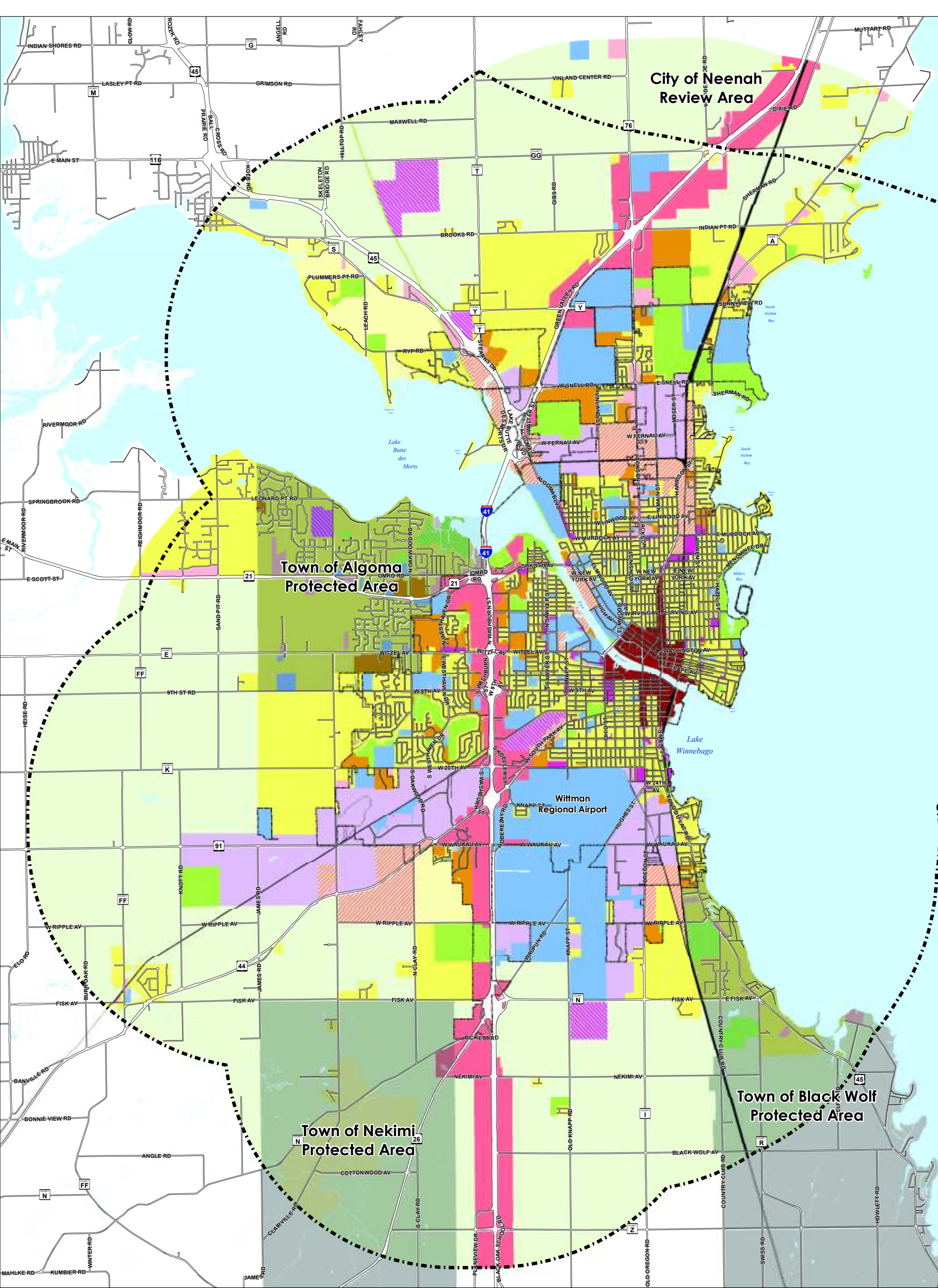
Tax ID	Street Location	Acres	Zoning			Water	Sanitary
			Zoning Code	Residential	Non-Residential		
91413344100	GIBSON CT	0.25	SR-5-LRO	Single Family Residential - 5 LRO Overlay		Yes	Yes
91414610100	STONEY BEACH RD	0.50	SR-5-LRO	Single Family Residential - 5 LRO Overlay		Yes	Yes
91414610200	STONEY BEACH RD	0.35	SR-5-LRO	Single Family Residential - 5 LRO Overlay		Yes	Yes
91414700100	STONEY BEACH RD	0.49	SR-5-LRO	Single Family Residential - 5 LRO Overlay		Yes	Yes
91414700400	STONEY BEACH RD	1.05	SR-5-LRO	Single Family Residential - 5 LRO Overlay		Yes	Yes
91414980000	STONEY BEACH ST	0.20	SR-5-LRO	Single Family Residential - 5 LRO Overlay		Yes	Yes
91415000000	STONEY BEACH ST	0.11	SR-5-LRO	Single Family Residential - 5 LRO Overlay		Yes	Yes
91415280000	STONEY BEACH ST	0.28	SR-5-LRO	Single Family Residential - 5 LRO Overlay		Yes	Yes
91415350000	STONEY BEACH LN	0.28	SR-5-LRO	Single Family Residential - 5 LRO Overlay		Yes	Yes
91415360000	STONEY BEACH LN	0.15	SR-5-LRO	Single Family Residential - 5 LRO Overlay		Yes	Yes
91415380200	STONEY BEACH LN	0.72	SR-5-LRO	Single Family Residential - 5 LRO Overlay		Yes	Yes
91415540100	CRIMSON LN	0.91	SR-5-LRO	Single Family Residential - 5 LRO Overlay		Yes	Yes
91415650000	LAKE REST LN	0.28	SR-5-LRO	Single Family Residential - 5 LRO Overlay		Yes	Yes
91417110000	E WAUKAU AVE	0.50	SR-5-LRO	Single Family Residential - 5 LRO Overlay		Yes	Yes
91417450100	OLD ORCHARD LN	0.59	SR-5-LRO	Single Family Residential - 5 LRO Overlay		Yes	Yes
91518611600	SHOREWOOD DR	0.30	SR-5-LRO	Single Family Residential - 5 LRO Overlay		Yes	Yes
91518612400	SHOREWOOD DR	0.40	SR-5-LRO	Single Family Residential - 5 LRO Overlay		Yes	Yes
91518670600	E MURDOCK AVE	0.11	SR-5-LRO	Single Family Residential - 5 LRO Overlay		Yes	Yes
91518672600	HICKORY LN	0.68	SR-5-LRO	Single Family Residential - 5 LRO Overlay		Yes	Yes
91518678300	HICKORY LN	0.09	SR-5-LRO	Single Family Residential - 5 LRO Overlay		Yes	Yes
91518678400	HICKORY LN	0.18	SR-5-LRO	Single Family Residential - 5 LRO Overlay		Yes	Yes
91519624600	SHADOW LN	0.18	SR-5-LRO	Single Family Residential - 5 LRO Overlay		Yes	Yes
91519625400	SHADOW LN	0.18	SR-5-LRO	Single Family Residential - 5 LRO Overlay		Yes	Yes
91519626800	SHADOW LN	0.21	SR-5-LRO	Single Family Residential - 5 LRO Overlay		Yes	Yes
91519627900	COZY LN	0.19	SR-5-LRO	Single Family Residential - 5 LRO Overlay		Yes	Yes
91519628200	COZY LN	0.29	SR-5-LRO	Single Family Residential - 5 LRO Overlay		Yes	Yes
91550280000	DRIFTWOOD LN	0.65	SR-5-LRO	Single Family Residential - 5 LRO Overlay		Yes	Yes
91561500700	ISLAND VIEW DR	0.25	SR-5-LRO	Single Family Residential - 5 LRO Overlay		Yes	Yes
Single Family Residential - 5 LRO Overlay Total:			10.63	Acres			
91282000000	RYF RD	10.08	SR-5-PD	Single Family Residential - 5 PD Overlay		No	No
91282000001	RYF RD	25.15	SR-5-PD	Single Family Residential - 5 PD Overlay		No	No
91282000300	EDGEWOOD RD	0.30	SR-5-PD	Single Family Residential - 5 PD Overlay		Yes	Yes
91282001100	HEMLOCK CT	0.18	SR-5-PD	Single Family Residential - 5 PD Overlay		Yes	Yes
91282001500	HEMLOCK CT	0.17	SR-5-PD	Single Family Residential - 5 PD Overlay		Yes	Yes
91282002200	EDGEWOOD RD	0.43	SR-5-PD	Single Family Residential - 5 PD Overlay		Yes	Yes
91282150000	RYF RD	3.73	SR-5-PD	Single Family Residential - 5 PD Overlay		No	No
91282450000	EDGEWOOD LN	2.34	SR-5-PD	Single Family Residential - 5 PD Overlay		No	No
91282750000	RYF RD	7.42	SR-5-PD	Single Family Residential - 5 PD Overlay		Yes	Yes
91416582200	ISAAC LN	0.26	SR-5-PD	Single Family Residential - 5 PD Overlay		Yes	Yes
91416582300	ISAAC LN	0.24	SR-5-PD	Single Family Residential - 5 PD Overlay		Yes	Yes
91416582400	ISAAC LN	0.24	SR-5-PD	Single Family Residential - 5 PD Overlay		Yes	Yes
91416582500	ISAAC LN	0.24	SR-5-PD	Single Family Residential - 5 PD Overlay		Yes	Yes
91416582600	ISAAC LN	0.24	SR-5-PD	Single Family Residential - 5 PD Overlay		Yes	Yes
91416582700	ISAAC LN	0.26	SR-5-PD	Single Family Residential - 5 PD Overlay		Yes	Yes
Single Family Residential - 5 PD Overlay Total:			51.28	Acres			
90805890100	BAY SHORE DR	1.77	SR-5PD-LRO	Single Family Residential - 5 PD, LRO Overlays		Yes	Yes
Single Family Residential - 5 PD, LRO Overlays			1.77	Acres			
90203850000	WINNEBAGO AVE	0.19	SR-9	Single Family Residential - 9		Yes	Yes
90206470000	LEGION PL	0.12	SR-9	Single Family Residential - 9		Yes	Yes
90602570000	BISMARCK AVE	0.11	SR-9	Single Family Residential - 9		Yes	Yes
90602660000	DAKOTA ST	0.11	SR-9	Single Family Residential - 9		Yes	Yes
90602960100	W 5TH AVE	0.69	SR-9	Single Family Residential - 9		Yes	Yes
90604940000	BISMARCK AVE	0.17	SR-9	Single Family Residential - 9		Yes	Yes
90605550000	W 8TH AVE	0.10	SR-9	Single Family Residential - 9		Yes	Yes
90605710000	W 9TH AVE	0.47	SR-9	Single Family Residential - 9		Yes	Yes
90605790000	W 9TH AVE	0.04	SR-9	Single Family Residential - 9		Yes	Yes
90605940000	W 8TH AVE	0.10	SR-9	Single Family Residential - 9		Yes	Yes
90803640000	LAKE ST	0.33	SR-9	Single Family Residential - 9		Yes	Yes
90803660000	LAKE ST	0.18	SR-9	Single Family Residential - 9		Yes	Yes
90804760000	CEAPE AVE	0.11	SR-9	Single Family Residential - 9		Yes	Yes
91100060000	BOWEN ST	0.11	SR-9	Single Family Residential - 9		Yes	Yes
91100250000	BOYD ST	0.12	SR-9	Single Family Residential - 9		Yes	Yes
91102350000	BOWEN ST	0.18	SR-9	Single Family Residential - 9		Yes	Yes
91106700000	EVANS ST	0.13	SR-9	Single Family Residential - 9		Yes	Yes
91203310000	WESTERN ST	0.14	SR-9	Single Family Residential - 9		Yes	Yes
91203670000	LIBERTY ST	0.14	SR-9	Single Family Residential - 9		Yes	Yes
91204420000	WALNUT ST	0.13	SR-9	Single Family Residential - 9		Yes	Yes
91204470000	WALNUT ST	0.13	SR-9	Single Family Residential - 9		Yes	Yes
91204480000	WALNUT ST	0.19	SR-9	Single Family Residential - 9		Yes	Yes
91205120000	REED AVE	0.13	SR-9	Single Family Residential - 9		Yes	Yes
91205440000	WALNUT ST	0.13	SR-9	Single Family Residential - 9		Yes	Yes
91206190100	LIBERTY ST	0.15	SR-9	Single Family Residential - 9		Yes	Yes
91206560000	SPRUCE ST	0.14	SR-9	Single Family Residential - 9		Yes	Yes
91207280000	BEECH ST	0.14	SR-9	Single Family Residential - 9		Yes	Yes
91207360000	BEECH ST	0.13	SR-9	Single Family Residential - 9		Yes	Yes
91207390000	BEECH ST	0.14	SR-9	Single Family Residential - 9		Yes	Yes
91208040000	CEDAR ST	0.13	SR-9	Single Family Residential - 9		Yes	Yes
91208160000	W NEW YORK AVE	0.15	SR-9	Single Family Residential - 9		Yes	Yes
91208890000	W BENT AVE	0.15	SR-9	Single Family Residential - 9		Yes	Yes
91209190000	WISCONSIN ST	0.13	SR-9	Single Family Residential - 9		Yes	Yes

Tax ID	Street Location	Acres	Zoning			Water	Sanitary
			Zoning Code	Residential	Non-Residential		
91211250000	WESTERN ST	0.13	SR-9	Single Family Residential - 9		Yes	Yes
91212760000	ROOSEVELT AVE	0.23	SR-9	Single Family Residential - 9		Yes	Yes
91213180000	HAMILTON ST	0.14	SR-9	Single Family Residential - 9		Yes	Yes
91213390000	W LINWOOD AVE	0.17	SR-9	Single Family Residential - 9		Yes	Yes
91213720000	COLUMBIA AVE	0.10	SR-9	Single Family Residential - 9		Yes	Yes
91216920100	PLYMOUTH ST	0.18	SR-9	Single Family Residential - 9		Yes	Yes
91217470000	OLIVE ST	0.16	SR-9	Single Family Residential - 9		Yes	Yes
91217490000	OLIVE ST	0.16	SR-9	Single Family Residential - 9		Yes	Yes
91302510000	W 9TH AVE	0.17	SR-9	Single Family Residential - 9		Yes	Yes
91303360000	W 9TH AVE	0.19	SR-9	Single Family Residential - 9		Yes	Yes
91304070000	W 11TH AVE	0.17	SR-9	Single Family Residential - 9		Yes	Yes
91304560000	W SOUTH PARK AVE	0.14	SR-9	Single Family Residential - 9		Yes	Yes
91305790000	W 11TH AVE	0.17	SR-9	Single Family Residential - 9		Yes	Yes
91306290000	OSBORN AVE	0.14	SR-9	Single Family Residential - 9		Yes	Yes
91400220100	S MAIN ST	0.23	SR-9	Single Family Residential - 9		Yes	Yes
91400710000	NEBRASKA ST	0.25	SR-9	Single Family Residential - 9		Yes	Yes
91400730102		0.44	SR-9	Single Family Residential - 9		No	No
91400820400	NEBRASKA ST	0.58	SR-9	Single Family Residential - 9		No	No
91401190000	DOTY ST	0.50	SR-9	Single Family Residential - 9		Yes	Yes
91401600000	DOTY ST	0.16	SR-9	Single Family Residential - 9		Yes	Yes
91402090000	DOTY ST	0.15	SR-9	Single Family Residential - 9		Yes	Yes
91403350000	W 24TH AVE	0.16	SR-9	Single Family Residential - 9		Yes	Yes
91403450000	W 24TH AVE	0.16	SR-9	Single Family Residential - 9		Yes	Yes
91403460000	S MAIN ST	0.27	SR-9	Single Family Residential - 9		Yes	Yes
91404190000	W 17TH AVE	0.17	SR-9	Single Family Residential - 9		Yes	Yes
91404900000	W 19TH AVE	0.17	SR-9	Single Family Residential - 9		Yes	Yes
91406800000	MONTANA ST	0.17	SR-9	Single Family Residential - 9		Yes	Yes
91406810000	MONTANA ST	0.17	SR-9	Single Family Residential - 9		Yes	Yes
91406880000	W 19TH AVE	0.18	SR-9	Single Family Residential - 9		Yes	Yes
91407180100	W 20TH AVE	0.15	SR-9	Single Family Residential - 9		Yes	Yes
91408090000	DELAWARE ST	0.16	SR-9	Single Family Residential - 9		Yes	Yes
91408120000	DELAWARE ST	0.16	SR-9	Single Family Residential - 9		Yes	Yes
91409830100	ALASKA ST	0.22	SR-9	Single Family Residential - 9		Yes	Yes
91409880100	W 20TH AVE	0.36	SR-9	Single Family Residential - 9		Yes	Yes
91426432502	MICHIGAN ST	0.19	SR-9	Single Family Residential - 9		Yes	Yes
91500900000	CENTRAL ST	0.13	SR-9	Single Family Residential - 9		Yes	Yes
91501010000	W CUSTER AVE	0.21	SR-9	Single Family Residential - 9		Yes	Yes
91501010100	W CUSTER AVE	0.15	SR-9	Single Family Residential - 9		Yes	Yes
91501960000	BURDICK ST	0.17	SR-9	Single Family Residential - 9		Yes	Yes
91502760000	W BENT AVE	0.16	SR-9	Single Family Residential - 9		Yes	Yes
91503730000	N MAIN ST	0.16	SR-9	Single Family Residential - 9		Yes	Yes
91504400000	ASHLAND ST	0.16	SR-9	Single Family Residential - 9		Yes	Yes
91504990000	E CUSTER AVE	0.16	SR-9	Single Family Residential - 9		Yes	Yes
91505310000	HARRISON ST	0.12	SR-9	Single Family Residential - 9		Yes	Yes
91505770000	HARRISON ST	0.12	SR-9	Single Family Residential - 9		Yes	Yes
91512311005	MOUNT VERNON ST	0.16	SR-9	Single Family Residential - 9		Yes	Yes
91512311007	MOUNT VERNON ST	0.15	SR-9	Single Family Residential - 9		Yes	Yes
91515000000	VIOLA AVE	0.17	SR-9	Single Family Residential - 9		Yes	Yes
91516150000	ASHLAND ST	0.15	SR-9	Single Family Residential - 9		Yes	Yes
91516300000	ASHLAND ST	0.15	SR-9	Single Family Residential - 9		Yes	Yes
91516330000	ASHLAND ST	0.15	SR-9	Single Family Residential - 9		Yes	Yes
91516390000	HARRISON ST	0.15	SR-9	Single Family Residential - 9		Yes	Yes
91516590000	W LINWOOD AVE	0.26	SR-9	Single Family Residential - 9		Yes	Yes
91516630000	W LINWOOD AVE	0.21	SR-9	Single Family Residential - 9		Yes	Yes
91516700000	W LINWOOD AVE	0.17	SR-9	Single Family Residential - 9		Yes	Yes
91516900000	N MAIN ST	0.15	SR-9	Single Family Residential - 9		Yes	Yes
91517000000	JEFFERSON ST	0.15	SR-9	Single Family Residential - 9		Yes	Yes
91517010000	JEFFERSON ST	0.15	SR-9	Single Family Residential - 9		Yes	Yes
91517140000	JEFFERSON ST	0.16	SR-9	Single Family Residential - 9		Yes	Yes
91517700000	HARRISON ST	0.15	SR-9	Single Family Residential - 9		Yes	Yes
91517910000	N MAIN ST	0.15	SR-9	Single Family Residential - 9		Yes	Yes
91518020000	GENEVA ST	0.15	SR-9	Single Family Residential - 9		Yes	Yes
91518030000	GENEVA ST	0.15	SR-9	Single Family Residential - 9		Yes	Yes
91518300000	BACON AVE	0.13	SR-9	Single Family Residential - 9		Yes	Yes
91518910100	ALLEN AVE	0.16	SR-9	Single Family Residential - 9		Yes	Yes
91519060000	ASHLAND ST	0.16	SR-9	Single Family Residential - 9		Yes	Yes
91601340100	DOVE ST	0.12	SR-9	Single Family Residential - 9		Yes	Yes
91601730000	DOVE ST	0.08	SR-9	Single Family Residential - 9		Yes	Yes
91602200000	HAWK ST	0.14	SR-9	Single Family Residential - 9		Yes	Yes
91602220000	HAWK ST	0.14	SR-9	Single Family Residential - 9		Yes	Yes
91602230000	HAWK ST	0.14	SR-9	Single Family Residential - 9		Yes	Yes
91602240000	HAWK ST	0.14	SR-9	Single Family Residential - 9		Yes	Yes
91602250000	N LARK ST	0.14	SR-9	Single Family Residential - 9		Yes	Yes
91602260000	N LARK ST	0.14	SR-9	Single Family Residential - 9		No	No
91602270000	N LARK ST	0.14	SR-9	Single Family Residential - 9		No	No
91602310000	HAWK ST	0.28	SR-9	Single Family Residential - 9		Yes	Yes
91602330000	HAWK ST	0.14	SR-9	Single Family Residential - 9		Yes	Yes
91602640000	HAWK ST	0.41	SR-9	Single Family Residential - 9		Yes	Yes
91602860000	N EAGLE ST	0.29	SR-9	Single Family Residential - 9		Yes	Yes
91602970000	N SAWYER ST	0.26	SR-9	Single Family Residential - 9		Yes	Yes
91603050000	DOVE ST	0.14	SR-9	Single Family Residential - 9		Yes	Yes

Tax ID	Street Location	Acres	Zoning			Water	Sanitary
			Zoning Code	Residential	Non-Residential		
91603270000	HAWK ST	0.20	SR-9	Single Family Residential - 9		Yes	Yes
91604750100	FILLMORE AVE	0.14	SR-9	Single Family Residential - 9		Yes	Yes
91605030000	VAN BUREN AVE	0.17	SR-9	Single Family Residential - 9		Yes	Yes
91605790000	ADAMS AVE	0.19	SR-9	Single Family Residential - 9		Yes	Yes
91605820000	PIERCE AVE	0.14	SR-9	Single Family Residential - 9		Yes	Yes
91605950000	PIERCE AVE	0.14	SR-9	Single Family Residential - 9		Yes	Yes
91606240000	JOSSLYN ST	0.16	SR-9	Single Family Residential - 9		Yes	Yes
91606370000	PIERCE AVE	0.14	SR-9	Single Family Residential - 9		Yes	Yes
91606560100	TAFT AVE	0.20	SR-9	Single Family Residential - 9		Yes	Yes
91606580000	ADAMS AVE	0.14	SR-9	Single Family Residential - 9		Yes	Yes
91607120000	TYLER AVE	0.14	SR-9	Single Family Residential - 9		Yes	Yes
91607420200	TYLER AVE	0.14	SR-9	Single Family Residential - 9		Yes	Yes
91607560000	ARTHUR AVE	0.14	SR-9	Single Family Residential - 9		Yes	Yes
91607670000	VAN BUREN AVE	0.14	SR-9	Single Family Residential - 9		Yes	Yes
91607900000	PIERCE AVE	0.14	SR-9	Single Family Residential - 9		Yes	Yes
91608780000	RUSH AVE	0.14	SR-9	Single Family Residential - 9		Yes	Yes
91609700000	N LARK ST	0.14	SR-9	Single Family Residential - 9		Yes	Yes
Single Family Residential - 9 Total:		22.98	Acres				
91400730102		1.57	SR-9-PD	Single Family Residential - 9 PD Overlay		Yes	Yes
Single Family Residential - 9 PD Overlay Total:		1.57	Acres				
90200430000	OTTER AVE	0.13	TR-10	Two Family Residential - 10		Yes	Yes
90200440000	OTTER AVE	0.13	TR-10	Two Family Residential - 10		Yes	Yes
90201690000	BAY ST	0.20	TR-10	Two Family Residential - 10		Yes	Yes
90301040000	W 8TH AVE	0.10	TR-10	Two Family Residential - 10		Yes	Yes
90301060000	W 8TH AVE	0.10	TR-10	Two Family Residential - 10		Yes	Yes
90301070000	W 8TH AVE	0.10	TR-10	Two Family Residential - 10		Yes	Yes
90301100000	W 9TH AVE	0.10	TR-10	Two Family Residential - 10		Yes	Yes
90301110000	W 9TH AVE	0.10	TR-10	Two Family Residential - 10		Yes	Yes
90301120000	W 9TH AVE	0.10	TR-10	Two Family Residential - 10		Yes	Yes
90301150000	W 9TH AVE	0.10	TR-10	Two Family Residential - 10		Yes	Yes
90302550000	W 11TH AVE	0.17	TR-10	Two Family Residential - 10		Yes	Yes
90305730000	NEBRASKA ST	0.37	TR-10	Two Family Residential - 10		Yes	Yes
90306030000	W 17TH AVE	0.24	TR-10	Two Family Residential - 10		Yes	Yes
90507280000	HIGH AVE	0.17	TR-10	Two Family Residential - 10		Yes	Yes
90600180000	W 4TH AVE	0.14	TR-10	Two Family Residential - 10		Yes	Yes
90600200100	W 4TH AVE	0.14	TR-10	Two Family Residential - 10		Yes	Yes
90600200200	W 5TH AVE	0.14	TR-10	Two Family Residential - 10		Yes	Yes
90600420000	W 5TH AVE	0.14	TR-10	Two Family Residential - 10		Yes	Yes
90600430100	W 5TH AVE	0.13	TR-10	Two Family Residential - 10		Yes	Yes
90600770000	W 7TH AVE	0.11	TR-10	Two Family Residential - 10		Yes	Yes
90600780000	W 7TH AVE	0.14	TR-10	Two Family Residential - 10		Yes	Yes
90801810000	OTTER AVE	0.19	TR-10	Two Family Residential - 10		Yes	Yes
90806110000	MILL ST	0.23	TR-10	Two Family Residential - 10		Yes	Yes
90902760000	W 7TH AVE	0.10	TR-10	Two Family Residential - 10		Yes	Yes
90905310000	W 5TH AVE	0.14	TR-10	Two Family Residential - 10		Yes	Yes
90905340000	W 6TH AVE	0.14	TR-10	Two Family Residential - 10		Yes	Yes
90905720000	W 7TH AVE	0.17	TR-10	Two Family Residential - 10		Yes	Yes
90907710000	W 16TH AVE	0.18	TR-10	Two Family Residential - 10		Yes	Yes
90907920000	OREGON ST	0.31	TR-10	Two Family Residential - 10		Yes	Yes
91001220000	STERLING AVE	0.12	TR-10	Two Family Residential - 10		Yes	Yes
91001660000	MOUNT VERNON ST	0.19	TR-10	Two Family Residential - 10		Yes	Yes
91003800000	ROCK PL	0.16	TR-10	Two Family Residential - 10		Yes	Yes
91008720000	OSTERTAG PL	0.13	TR-10	Two Family Residential - 10		No	No
91008730000	OSTERTAG PL	0.11	TR-10	Two Family Residential - 10		No	No
91300830000	W 14TH AVE	0.16	TR-10	Two Family Residential - 10		Yes	Yes
91300840000	W 14TH AVE	0.06	TR-10	Two Family Residential - 10		Yes	Yes
91300960000	W 14TH AVE	0.17	TR-10	Two Family Residential - 10		Yes	Yes
91301080000	W 15TH AVE	0.17	TR-10	Two Family Residential - 10		Yes	Yes
91506330000	GRAND ST	0.16	TR-10	Two Family Residential - 10		Yes	Yes
Two Family Residential - 10 Total:		5.94	Acres				
90400300000	MERRITT AVE	0.15	TR-10-PD	Two Family Residential - 10 - PD Overlay		Yes	Yes
90400610000	MERRITT AVE	0.36	TR-10-PD	Two Family Residential - 10 - PD Overlay		Yes	Yes
90401340000	MOUNT VERNON ST	0.17	TR-10-PD	Two Family Residential - 10 - PD Overlay		Yes	Yes
90401460000	MADISON ST	0.14	TR-10-PD	Two Family Residential - 10 - PD Overlay		Yes	Yes
90401520000	MERRITT AVE	0.12	TR-10-PD	Two Family Residential - 10 - PD Overlay		Yes	Yes
90402100000	JEFFERSON ST	0.16	TR-10-PD	Two Family Residential - 10 - PD Overlay		Yes	Yes
90402250000	JEFFERSON ST	0.18	TR-10-PD	Two Family Residential - 10 - PD Overlay		Yes	Yes
90402280000	JEFFERSON ST	0.36	TR-10-PD	Two Family Residential - 10 - PD Overlay		Yes	Yes
90402310000	JEFFERSON ST	0.09	TR-10-PD	Two Family Residential - 10 - PD Overlay		Yes	Yes
90402320000	JEFFERSON ST	0.09	TR-10-PD	Two Family Residential - 10 - PD Overlay		Yes	Yes
90402330000	JEFFERSON ST	0.08	TR-10-PD	Two Family Residential - 10 - PD Overlay		Yes	Yes
90402340000	JEFFERSON ST	0.10	TR-10-PD	Two Family Residential - 10 - PD Overlay		Yes	Yes
90402360000	JEFFERSON ST	0.09	TR-10-PD	Two Family Residential - 10 - PD Overlay		Yes	Yes
90402370000	JEFFERSON ST	0.09	TR-10-PD	Two Family Residential - 10 - PD Overlay		Yes	Yes
90402580000	MOUNT VERNON ST	0.09	TR-10-PD	Two Family Residential - 10 - PD Overlay		Yes	Yes
90402680000	JEFFERSON ST	0.18	TR-10-PD	Two Family Residential - 10 - PD Overlay		Yes	Yes
90403050000	PLEASANT ST	0.12	TR-10-PD	Two Family Residential - 10 - PD Overlay		Yes	Yes
90403470000	E PARKWAY AVE	0.10	TR-10-PD	Two Family Residential - 10 - PD Overlay		Yes	Yes
90404630000	GRAND ST	0.15	TR-10-PD	Two Family Residential - 10 - PD Overlay		Yes	Yes
90405280000	GRAND ST	0.16	TR-10-PD	Two Family Residential - 10 - PD Overlay		Yes	Yes

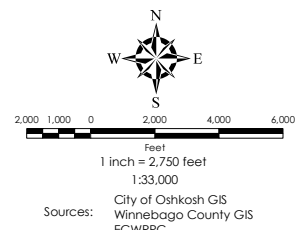
Tax ID	Street Location	Acres	Zoning			Water	Sanitary
			Zoning Code	Residential	Non-Residential		
90703450000	CENTRAL ST	0.09	TR-10-PD	Two Family Residential - 10 - PD Overlay		Yes	Yes
90703510000	FRANKLIN ST	0.14	TR-10-PD	Two Family Residential - 10 - PD Overlay		Yes	Yes
90703830000	W PARKWAY AVE	0.05	TR-10-PD	Two Family Residential - 10 - PD Overlay		Yes	Yes
91000420000	E IRVING AVE	0.13	TR-10-PD	Two Family Residential - 10 - PD Overlay		Yes	Yes
91004030100	E LINCOLN AVE	0.09	TR-10-PD	Two Family Residential - 10 - PD Overlay		Yes	Yes
91005140100	FRANKLIN ST	0.00	TR-10-PD	Two Family Residential - 10 - PD Overlay		No	No
91005140200	FRANKLIN ST	0.00	TR-10-PD	Two Family Residential - 10 - PD Overlay		No	No
91005380000	DIVISION ST	0.14	TR-10-PD	Two Family Residential - 10 - PD Overlay		Yes	Yes
91005770000	FREDERICK ST	0.15	TR-10-PD	Two Family Residential - 10 - PD Overlay		Yes	Yes
91103740301	GROVE ST	0.18	TR-10-PD	Two Family Residential - 10 - PD Overlay		Yes	Yes
91103740302	GROVE ST	0.15	TR-10-PD	Two Family Residential - 10 - PD Overlay		Yes	Yes
91103740303	GROVE ST	0.15	TR-10-PD	Two Family Residential - 10 - PD Overlay		Yes	Yes
91103740304	GROVE ST	0.14	TR-10-PD	Two Family Residential - 10 - PD Overlay		Yes	Yes
91103740305	GROVE ST	0.14	TR-10-PD	Two Family Residential - 10 - PD Overlay		Yes	Yes
91103740306	GROVE ST	0.15	TR-10-PD	Two Family Residential - 10 - PD Overlay		Yes	Yes
91301860000	W 17TH AVE	0.39	TR-10-PD	Two Family Residential - 10 - PD Overlay		Yes	Yes
Two Family Residential - 10 - PD Overlay Total:		5.07	Acres				
90501650000	WISCONSIN ST	0.11	TR-10PDUTO	Two Family Residential - 10 - PD, UTO Overlays		Yes	Yes
Two Family Residential - 10 - PD, UTO Overlays Total:		0.11	Acres				
90505500000	SCOTT AVE	0.14	TR-10-UTO	Two Family Residential - 10 - UTO Overlay		Yes	Yes
Two Family Residential - 10 - UTO Overlay Total:		0.14	Acres				
90603870000	W 3RD AVE	0.34	UI		Urban Industrial	Yes	Yes
90603880000	W 3RD AVE	0.24	UI		Urban Industrial	Yes	Yes
90603890000	W 3RD AVE	0.17	UI		Urban Industrial	Yes	Yes
90603900000	W 3RD AVE	0.17	UI		Urban Industrial	Yes	Yes
90603910000	W 3RD AVE	0.17	UI		Urban Industrial	Yes	Yes
90603930000	W 3RD AVE	0.17	UI		Urban Industrial	Yes	Yes
91249020000	W SNELL RD	30.54	UI		Urban Industrial	Yes	Yes
91249030000	W SNELL RD	16.35	UI		Urban Industrial	No	No
91249040000	W SNELL RD	1.81	UI		Urban Industrial	No	No
91504460000	ASHLAND ST	0.16	UI		Urban Industrial	Yes	Yes
91504470000	ASHLAND ST	0.14	UI		Urban Industrial	Yes	Yes
91504890200	HARRISON ST	1.27	UI		Urban Industrial	Yes	Yes
91512311022	ASHLAND ST	0.15	UI		Urban Industrial	Yes	Yes
91512311023	ASHLAND ST	0.15	UI		Urban Industrial	Yes	Yes
91512311024	ASHLAND ST	0.15	UI		Urban Industrial	Yes	Yes
91520850000	HARRISON ST	1.17	UI		Urban Industrial	Yes	Yes
Urban Industrial Total:		53.15	Acres				
91278010000	OMNI DR	2.31	UI-PD		Urban Industrial PD Overlay	Yes	Yes
91278020000	OMNI DR	2.33	UI-PD		Urban Industrial PD Overlay	Yes	Yes
91278030000	OMNI DR	4.47	UI-PD		Urban Industrial PD Overlay	Yes	Yes
91278040000	OMNI DR	5.00	UI-PD		Urban Industrial PD Overlay	Yes	Yes
91278050000	OMNI DR	4.40	UI-PD		Urban Industrial PD Overlay	Yes	Yes
91280000000	LAKE BUTTE DES MORTS DR	0.67	UI-PD		Urban Industrial PD Overlay	Yes	No
91310211000	W RIPPLE AVE	39.01	UI-PD		Urban Industrial PD Overlay	Yes	No
91310221002	POBEREZY RD	13.44	UI-PD		Urban Industrial PD Overlay	No	No
91506060000	BROAD ST	0.20	UI-PD		Urban Industrial PD Overlay	Yes	Yes
Urban Industrial PD Overlay Total:		71.83	Acres				
90101200000	ALGOMA BLVD	0.14	UMU	Urban Mixed Use		Yes	Yes
90101210000	HIGH AVE	0.21	UMU	Urban Mixed Use		Yes	Yes
90101420000	PEARL AVE	0.18	UMU	Urban Mixed Use		Yes	Yes
90300130101	W 6TH AVE	0.10	UMU	Urban Mixed Use		Yes	Yes
90300130102	W 6TH AVE	0.31	UMU	Urban Mixed Use		Yes	Yes
90300470000	W 7TH AVE	0.21	UMU	Urban Mixed Use		Yes	Yes
90303830000	W SOUTH PARK AVE	0.09	UMU	Urban Mixed Use		Yes	Yes
90303930000	OREGON ST	0.32	UMU	Urban Mixed Use		Yes	Yes
90306060000	S MAIN ST	0.86	UMU	Urban Mixed Use		Yes	Yes
90402240000	N MAIN ST	0.09	UMU	Urban Mixed Use		Yes	Yes
90600130000	W 4TH AVE	0.14	UMU	Urban Mixed Use		Yes	Yes
90603510201	WITZEL AVE	0.46	UMU	Urban Mixed Use		Yes	Yes
90605930000	W 8TH AVE	0.10	UMU	Urban Mixed Use		Yes	Yes
90607940000	N SAWYER ST	0.42	UMU	Urban Mixed Use		Yes	Yes
91000960000	JEFFERSON ST	0.15	UMU	Urban Mixed Use		Yes	Yes
91005290000	N MAIN ST	0.11	UMU	Urban Mixed Use		Yes	Yes
91006710000	N MAIN ST	0.13	UMU	Urban Mixed Use		Yes	Yes
91007550000	N MAIN ST	0.17	UMU	Urban Mixed Use		Yes	Yes
91007560100	N MAIN ST	0.14	UMU	Urban Mixed Use		Yes	Yes
91007570000	N MAIN ST	0.03	UMU	Urban Mixed Use		Yes	Yes
91007580000	N MAIN ST	0.10	UMU	Urban Mixed Use		Yes	Yes
91212790000	ALGOMA BLVD	0.12	UMU	Urban Mixed Use		Yes	Yes
91300510000	W 11TH AVE	0.17	UMU	Urban Mixed Use		Yes	Yes
91300620000	W 12TH AVE	0.17	UMU	Urban Mixed Use		Yes	Yes
91400240100	S MAIN ST	0.57	UMU	Urban Mixed Use		Yes	Yes
91401010000	S MAIN ST	0.45	UMU	Urban Mixed Use		Yes	Yes
91401020100	S MAIN ST	0.43	UMU	Urban Mixed Use		Yes	Yes
91401080000	S MAIN ST	0.54	UMU	Urban Mixed Use		Yes	Yes
91401090000	S MAIN ST	0.28	UMU	Urban Mixed Use		Yes	Yes
91401120000	S MAIN ST	0.28	UMU	Urban Mixed Use		Yes	Yes
91505340100	MOUNT VERNON ST	1.18	UMU	Urban Mixed Use		Yes	Yes
91600300000	OSHKOSH AVE	0.16	UMU	Urban Mixed Use		Yes	Yes

Tax ID	Street Location	Acres	Zoning			Water	Sanitary
			Zoning Code	Residential	Non-Residential		
91600310000	OSHKOSH AVE	0.27	UMU	Urban Mixed Use		Yes	Yes
91600320000	OSHKOSH AVE	0.09	UMU	Urban Mixed Use		Yes	Yes
91600340000	OSHKOSH AVE	0.18	UMU	Urban Mixed Use		Yes	Yes
91600350000	OSHKOSH AVE	0.18	UMU	Urban Mixed Use		Yes	Yes
91600370000	OSHKOSH AVE	0.12	UMU	Urban Mixed Use		Yes	Yes
91600390000	OSHKOSH AVE	0.15	UMU	Urban Mixed Use		Yes	Yes
91600410000	FOX ST	0.06	UMU	Urban Mixed Use		Yes	Yes
91608720000	N CAMPBELL RD	1.76	UMU	Urban Mixed Use		Yes	Yes
91610550000	PORTER AVE	0.14	UMU	Urban Mixed Use		Yes	Yes
Urban Mixed Use Total:		11.76	Acres				
90102440200	PEARL AVE	1.41	UMU-PD	Urban Mixed Use PD Overlay		Yes	Yes
90300780100	W 8TH AVE	1.36	UMU-PD	Urban Mixed Use PD Overlay		Yes	Yes
91504830300	BOWEN ST	2.24	UMU-PD	Urban Mixed Use PD Overlay		Yes	Yes
91504830500	BOWEN ST	2.39	UMU-PD	Urban Mixed Use PD Overlay		Yes	Yes
91504830600	E MURDOCK AVE	0.81	UMU-PD	Urban Mixed Use PD Overlay		Yes	Yes
91505920000	GRAND ST	0.35	UMU-PD	Urban Mixed Use PD Overlay		Yes	Yes
Urban Mixed Use PD Overlay Total:		8.56	Acres				
90102860000	JACKSON ST	0.28	UMU-PD-UTO	Urban Mixed Use PD, UTO Overlays		Yes	Yes
Urban Mixed Use PD, UTO Overlays Total:		0.28	Acres				
90800720000	BAY SHORE DR	3.31	UMU-RFO	Urban Mixed Use RFO Overlay		Yes	Yes
Urban Mixed Use RFO Overlay Total:		3.31	Acres				
90102840000	HIGH AVE	0.16	UMU-UTO	Urban Mixed Use UTO Overlay		Yes	Yes
90102850000	HIGH AVE	0.14	UMU-UTO	Urban Mixed Use UTO Overlay		Yes	Yes
Urban Mixed Use UTO Overlay Total:		0.3	Acres				
Grand Total:		2,225.56	Acres				



City of Oshkosh Comprehensive Plan Update Year 2040 Future Land Use

- | | | |
|-------------------------------------|-------------------------|--------------------|
| Rural Residential | Interstate Commercial | Quarry |
| Conservation Residential | Neighborhood Commercial | Community Facility |
| Light Density Residential | Center City | Park |
| Medium and High Density Residential | Mixed Use | Environmental |
| General Commercial | Industrial | Railroad ROW |



PREPARED AUGUST, 2018 BY:

