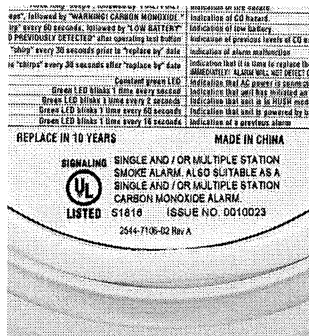


- There are separate regulations covering Carbon Monoxide Detectors/Alarms in One and Two-Family Dwellings in Wisconsin. There are also separate regulations covering Smoke Detectors in various types of buildings.
- Any Carbon Monoxide Detector that bears an Underwriters Laboratories listing mark or similar mark from an independent product safety certification organization is acceptable for use in Wisconsin.

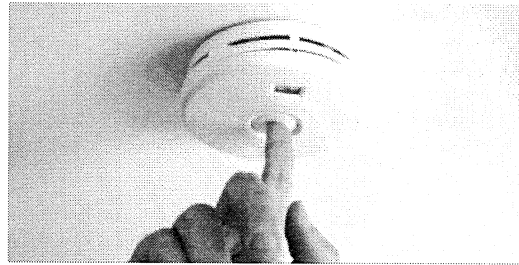


- Carbon Monoxide Detectors/Alarms must be installed according to the instructions of the manufacturer of the device.
- Violations of the CO regulations in SPS 362.0915 are subject to possible penalties. See s. 101.149 (8), Stats.
- If you need assistance to access services or need material in an alternate format, please contact the Department of Safety and Professional Services. TDD Relay dial 711 in Wisconsin, 800-947-3529 outside.

Maintenance Requirements

The owner of a residential building must maintain carbon monoxide detectors / alarms according to the manufacturer's instructions.

An occupant of a unit in a residential building may give the owner of the residential building written notice that a CO device is not functional or has been removed by a person other than the occupant. The owner of the residential building shall repair or replace the nonfunctional or missing device within five days after receipt of the notice.



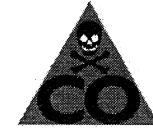
Carbon Monoxide Detectors/Alarms can be damaged by Freezing Temperatures.

Carbon Monoxide Detector/Alarm requirements for Tourist Rooming Houses (Commercial Cabins) are found in Wisconsin's Uniform Dwelling Code SPS 321.097

DIS also has One and Two-Family Dwelling Smoke Alarm and CO Detector/Alarm info online: <https://dsps.wi.gov/Documents/Programs/UDC/SmokeAlarmsCarbonMonoxideAlarms.pdf>

Carbon Monoxide Alarms are Needed in Most Multi-Unit Residential Buildings in Wisconsin

In Wisconsin, if you have fuel-burning appliances in a multi-unit residential building (3 or more units), you must have carbon monoxide detectors/alarms.



Carbon monoxide is a colorless, odorless gas produced by incompletely burning fuel containing carbon. You can't see it, smell it, or taste it; but carbon monoxide can kill.

A carbon monoxide detector/alarm is a device that detects the presence of carbon monoxide and sounds an alarm to give people in the area a chance to safely leave the building.

What are some examples of multi-unit residential buildings subject to the requirement for detectors/alarms? They include public buildings used for sleeping or lodging, such as hotels, motels, condominiums, apartment buildings, dormitories, fraternities, sororities, convents, seminaries, jails, prisons, homeless shelters, and community-based residential facilities. Also included are tourist rooming houses (cabins) and bed and breakfast establishments. Hospitals and nursing homes are not included.



State of Wisconsin
Department of Safety and Professional Services
 Division of Industry Services

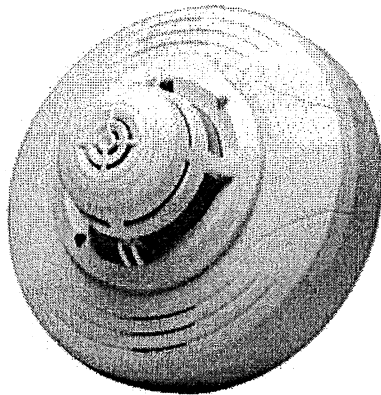
Carbon Monoxide Gas is Dangerous!

Carbon Monoxide poisoning can cause brain damage and death.

Carbon Monoxide Gas is the leading cause of accidental poisoning deaths in the United States.

Carbon Monoxide Gas is produced by common household fuel-burning appliances. When not properly vented, poison gas from these appliances can build up in a room or building.

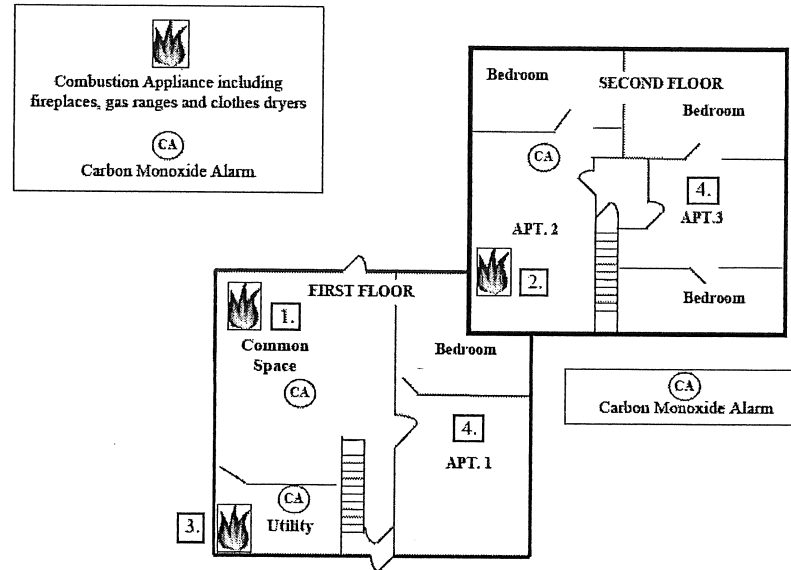
Early symptoms of Carbon Monoxide Poisoning such as headaches, nausea, and fatigue are often not connected to carbon monoxide as the deadly gas builds up undetected.



A Carbon Monoxide Detector/Alarm is a device that will detect the presence of Carbon Monoxide (CO) and sounds an alarm to give people in the area a chance to safely leave the building. CO Detectors/Alarms by themselves are not Smoke Detectors, and vice versa. However, there are combination Smoke/CO devices.

Minimum Carbon Monoxide Detector Locations

Multi-Unit Residential Buildings
Consult Code SPS 362.0915
June 12, 2018



Notes:

- 1 **Fuel Burning Appliance Outside of the Unit (Example: Gas Fireplace):**
A carbon monoxide detector is not required in the Unit when a carbon monoxide detector is provided on the ceiling between the fuel-burning appliance and the Unit.
- 2 **Fuel Burning Appliance (Example: Gas Stove):**
A carbon monoxide detector shall be provided in the unit that contains a fuel-burning appliance and shall be located in the immediate vicinity of the sleeping room.
- 3 **Forced-Air Furnace**
A carbon monoxide detector is not required in a Unit if a carbon monoxide detector is provided in the first room or area served by each main duct leaving the furnace and one of the following is satisfied:
 1. The carbon monoxide alarm signals are automatically transmitted to all units served by the furnace and to a designated location at a facility staffed by trained personnel on a continuous basis where alarm and supervisory signals are monitored, and facilities are provided for notification of the fire department.
 2. In addition to the first room or area served by each main duct leaving the furnace, a carbon monoxide detector is installed in every 4th unit on the same floor as that first room or area.
- 4 **Apartment No's. 1 and 3** do not require carbon monoxide detectors because they do not have any combustion appliances.